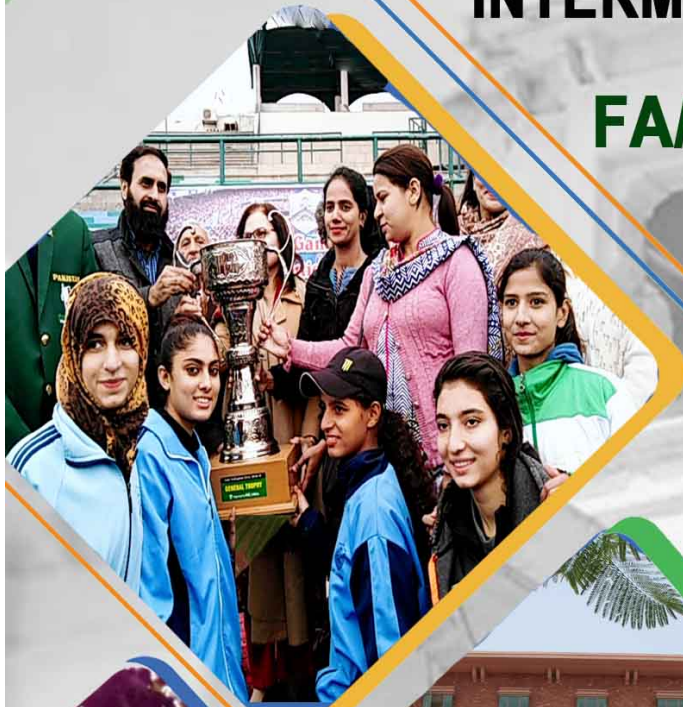




LAHORE COLLEGE FOR WOMEN UNIVERSITY

INTERMEDIATE COLLEGE LCWU

FA/F.S.C 2021-22



**KNOWLEDGE
&
SKILLS**

**COMMAND
ON
WORLD**

**OPPORTUNITIES
&
SUCCESS**

**100
GLORIOUS YEARS OF**



**COLLEGE FOR
WOMEN UNIVERSITY
LAHORE
1922-2022**

WWW.LCWU.EDU.PK

EXCELLENCE IN EDUCATION

CONTENT

Sr. No	Contents
3..	Vice Chancellor's Message
5.	Principal's Message
6..	History of LCWU
7.	Intermediate College Administrative Staff
8.	Academic Programs (Intermediate 1st and 2nd Shift)
11..	Post Graduate Programs (B.S, M.A, M.Sc., M.S., Ph.D.)
12.	Academic Departments (Faculty)
22.	Admission Rules (Application Procedure)
23.	Reserved Seats
24.	Migration
24.	Examination (Internal and External / BISE LHR)
25.	Medals
25.	Leave Rules
26.	Conduct and Behavior
26.	College Uniform (Dress Code)
27.	Co-curricular and Sports Activities
28.	Library and Book Bank
29.	Identity Cards
29.	College Advisory Council / Academic Committee
30.	Medical Facilities
31.	Transport Facilities
32.	Scholarships (Financial Assistance for Students)
33.	Directorate of Faculty Development and Internationalization
34.	Directorate of Student Affairs
35.	Student Counseling and Guidance Centre
36.	Centre for Career Counseling and Job Placement
37.	Independent Living Centre (Community Service)
37.	Residential Facility
38.	Hostel Rules
44.	F.A./F.Sc. Fee Structure (2021-22)
45.	Last Year's Result / Merit



PROF. DR. BUSHRA MIRZA (T.I)
LCWU VICE CHANCELLOR

VICE CHANCELLOR'S MESSAGE

Dear Students,

It gives me immense pleasure to welcome you as our first year class of session 2021-2023 of the Intermediate College of Lahore College for Women University. You are indeed blessed to find an opportunity to get education at one of the finest intermediate colleges of Lahore. Our College is recognized as a state leader in teaching and learning, student relationships and wellbeing.

LCWU Intermediate College holds the pride of being one of the well renowned colleges of women in Pakistan. This College is a premier institution for women education in Lahore with a history of more than 98 years' commendable service to its credit. Lahore College enjoys a very good reputation as a gateway for entrance into different universities and professional institutions, both inside the country and abroad. Our state of the art campus has spacious classrooms, well equipped modern science laboratories, a well designed Art studio, excellent TV and FM studios and laboratories of Mass Communication, Computer Science, well stocked library and a vast playground to meet the growing demands of an ever increasing student-body.

Intermediate College as the feeding stream of LCWU is a gateway to the University that has been empowering generations of women by providing quality higher education and opening the doors of employability and entrepreneurship for almost a century. Being a progressive College and University, it aims to come up to the standards of top International Institutes. The College offers a wide range of programs including F.Sc. (Pre-Medical, Pre-Engineering), ICS (Physics, Economics, Statistics), I.COM, General Science, Home Economics, Humanities. To cater the needs of increasing number of students and due to high merit, the College is also offering Self-supporting programs for Pre-engineering, Pre-medical, ICS, I.Com and Humanities group. With highly educated and dedicated teachers and excellent infrastructure, our college helps students to realize their goals in life. Our academic standards continue to improve year on year and the curriculum we offer is carefully designed to engage and inspire, providing students with the necessary skills to flourish in an ever changing world. To complement this, we provide a wide range of extra-curricular activities to enrich their academic and social lives.

In the wake of the current pandemic of COVID-19, LCWU has made enormous efforts to cope up with the challenges emerged due to this critical situation. LCWU has successfully launched an Online Course Directory (OCD) at its official website. LCWU has also acquired and configured Learning Management System (LMS) in coordination with Higher Education Commission and Virtual University of Pakistan which has been successfully launched in June, 2020. The College has successfully started its regular online classes from 1st July, 2020 and also conducting monthly tests through its efficient online management system. Online Fee portal has also been successfully launched for students to deposit fee. Additionally, an excellent online admission system has been introduced for the very first time in the history of Intermediate College of LCWU and it is running very smoothly.

Another feather in the cap of LCWU is the launch of Web TV in April 2020. This Web TV is an effective tool of communication during this pandemic. It provides a great platform for making necessary announcements and for disseminating important information and to provide the links of new & amended lectures prepared & uploaded by the faculty members. This Web TV is also facilitating us in delivering online lectures for students. LCWU in a joint venture with International Young Psychologists Society has successfully launched its Online Counseling Center. This Center is facilitating the people in Corona Consultation, briefing about corona and precautions, and caregivers, dealing with stress, anxiety and depression.

The college has the privilege of having a healthy, harmonious ambience and rich values which have played pivotal role in shaping the future of innumerable students. LCWU celebrates the growth of intellect and creativity in women. The College admits students from diversified backgrounds and enables them to learn and be tolerant citizens. Our mission is to transform students into rational thinkers, competent workers, law abiding citizens and spiritually enlightened individuals. This is my firm belief that the rich values and traditions embedded here would carry you to greater heights in future.

I welcome all the students and wish you all the best for achieving greater success and scaling new heights in the coming session. I hope that your stay at Lahore College would be rewarding for the State and your future career.

Wishing you all Good Luck!



MS. RAHAT AJMAL
PRINCIPAL

PRINCIPAL'S MESSAGE

I am extremely pleased to extend a heartfelt welcome to the in-coming youth who have succeeded in joining our vibrant community of learning at Lahore College for Women University. Congratulations! LCWU is a premier institution for women education in Lahore with a history of more than 98 years' commendable service to its credit. Our mission at LCWU is to offer the best affordable higher education without compromising on quality, credibility or academic excellence. LCWU enjoys a very good reputation as a gateway for entrance into different universities and professional institutions, both inside the country and abroad. We emphasize on empowering women for nation building by imparting education and enhancing their professional skills through a balanced combination of academic theory and practice. We, at LCWU, strive to produce highly skilled, professional, well-groomed and value-driven women leaders capable of sharing responsibility in a global community.

Our state-of-the-art campus has spacious classrooms, fully equipped labs, a well-stocked library and a vast playground to meet the growing demands of an ever-increasing student-body. Intellectual curiosity and innovative abilities of the student's nurture through interactive classroom sessions and technology-integrated lessons. Almost 50 societies are operating on campus to facilitate students in co-curricular activities and sports of their choice. Highly dedicated and professional educationists work hard day and night to create a dynamic learning environment required to take up the challenges of the 21st century. In view of the public's demand to increase the seats for F.Sc. (Pre- Medical and Pre-Engineering) ICS (Physics, Stats & Economics) and I.COM, and Humanities, a Self-Supporting Evening Program was started during the Session 2018-2020. Students, who could not come on merit of the Morning Program because of difference of a few marks got admission in the Evening Program and are doing very well.

Diversity of the learning community is one of our greatest strengths. It helps the students to become more tolerant by understanding and assimilating the dreams and aspirations of fellow students belonging to different stratum of society. We focus on the pursuit of knowledge through discipline to ensure success. On behalf of the administrative staff and the entire teaching faculty, I wish you the best and hope that your stay at LCWU will be a memorable experience.

HISTORY & EXCELLENCE

Lahore College for Women University, with a full time enrolment of about 16,000 students and a teaching faculty of more than 600 members, is one of the most prestigious institutions of Pakistan. It admits students at the Intermediate, Undergraduate, and Postgraduate level.

At the time of autonomy, in 1990, there were Masters classes in only six areas, but now with the University status, LCWU is offering degrees at undergraduate, postgraduate and doctoral level. BS 4 year degree program is being offered in 46 disciplines and 5 years Pharm-D and Architecture degree is being offered. University is offering MS/M.Phil degree in 32 subjects. The University is also offering Ph.D. programs in 25 disciplines i.e. Chemistry, Bio-Technology, Botany, Chemistry, Zoology, Computer Science, Pharmacology, City & Regional Planning, Mathematics, Environmental Science, Physics, Political Science, Management Sciences, Education, Applied, Psychology, Islamic Studies, Urdu, Punjabi, Fine Arts, Mass Communication and Persian.

Lahore College for Women University, established in May 1922 as an intermediate residential college, was originally housed in a building on Hall Road, Lahore, with strength of 60 students (25 boarders) and 13 staff members. By 1950, the College strength increased to 600 students and was shifted to the present building on Jail Road. LCWU by 1922 was affiliated with the University of the Punjab for undergraduate program in 18 subjects. Within the next two years the institution had graduate programs in 14 subjects. Post graduate classes in English were initiated in 1940 and Honours classes in five subjects were introduced in 1949. B.Sc. classes started in 1955 while Post-graduate classes in the subjects of Economics and Physics started in 1966. By 1979 Islamic Studies, Political Science and Psychology were also added to the ever increasing list of programs. The year 1990, when Administrative and Financial Autonomy was given to the institution, proved to be the turning point in the history of LCWU. On 13 August 1999, it was declared a Degree-Awarding institution. The institution was elevated to the status of a Women University on 10 September 2002.

The 21st century has brought a drastic revolution in science, which has completely transformed the world. Today sciences are exploring areas that defy imagination. Keeping in line with the importance of the sciences in today's world, LCWU has been fulfilling the demand of the female students in the area, as this was the only institution offering science subjects at undergraduate level. This is evident from the fact that majority of the female doctors, serving and retired, have at some stage (F.Sc. or B.Sc.) studied at Lahore College for Women. Since 1922 the college has proved its worth as the highest seat of learning for science subjects. At the moment Botany, Chemistry, Physics, Zoology, Bio-Technology, Mathematics, Economics, Statistics, Electronics, Environmental Science, Computer Science and Pharmacy are taught at Graduate, Postgraduate and Doctoral levels.

LCWU is cognizant of the significance of social sciences and liberal arts since they contribute to the aesthetic sense of human beings and are essential for the society. The Department of English, being more than 75 years old, is the oldest post-graduate department of the University. Founded by Prof Mrs. U.K. Siraj-ud-Din, it still is rooted in the traditions of scholarship and academic excellence. Besides English, Urdu, Punjabi, Islamic Studies, International Relations, Political Science, Fine Arts, Pakistan Studies, Mass Communication and Gender and Development Studies are being offered at graduate and postgraduate level. The graduates of LCWU take their place in moral, intellectual and professional leadership in all walks of national life.

Among its alumni are an extra ordinary number of teachers, physicians and professionals in all fields of life. At F.A./F.Sc. level the Intermediate College of LCWU is affiliated with the Board of Intermediate and Secondary Education, Lahore for the purpose of examinations. This Intermediate College has proved to be a very fruitful nursery in providing women force for professional education in the province.

Since the establishment of LCWU as a university, the institution has striven for improvement in Higher Education. MoU with various national industries and linkages with Foreign Universities have been established in the field of Pharmacy, Electronics, Environmental Science, Fine Arts, Economics, Mass Communication and Gender & Development Studies.

INTERMEDIATE COLLEGE ADMINISTRATION

1. Vice-Chancellor Prof. Dr. Bushra Mirza
2. Principal Ms. Rahat Ajmal
3. Additional Registrar Ms. Uzma Batool Magsi
4. Additional Controller of Examination Ms. Afsheen Mohib
5. Treasurer Mr. Riaz Ahmad
6. Director Students Affairs Dr. Huma Tauseef (Associate Prof. Computer Science)
7. Director Sports Ms. Humaira Aziz Mughal (Assistant Prof.)
8. Head Intermediate Science Program Dr. Naila Amjad (Assistant Prof. Statistics)
9. Head Intermediate Arts Program Dr. Saima Batool (Assistant Prof. Punjab)
10. Assistant Registrar (Estt.) Ms. Navera Hammad
11. Senior Estate Officer Mr. Sheikh Ghias-ud-Din Ahmad
12. Deputy Director Purchase Mr. Qadeer Salehri
13. Transport Officer Mr. Shahid Hussain
14. Senior Computer Operator Mr. Aftab Ahmad
15. Assistant Mr. Muhammad Razzaq
16. Assistant Mr. Afzaal Aslam
17. Personal Assistant Ms. Anum-un-Nisa
18. Lab Supervisor Mr. Junaid Khan
19. Junior Computer Operator Mr. Muhammad Awais
20. Junior Clerk Mr. Muhammad Mudassir
21. Junior Clerk Mr. Tahseen Wadood
22. Machine Operator Mr. Muhammad Tariq
23. Daftari Mr. M. Munim-ud-Din
24. Naib Qasid Mr. Salman Nazir

ACADEMIC PROGRAM

INTERMEDIATE MORNING PROGRAMS

Course of Study:

Compulsory Subjects

All students of Science and Arts will study the following compulsory subjects:

1. Urdu (However, foreign Students will study Pakistan Culture, after seeking prior permission from the B.I.S.E. Lahore.)
2. English
3. Islamic Education / Civics, Ethics (option for Non-Muslim Students) in Part-I
4. Pakistan Studies in Part-II

1. Science Groups (2021-2023)

Group	Elective Subjects		
Pre-Medical	Physics	Chemistry	Biology
Pre-Engineering	Physics	Chemistry	Mathematics

2. ICS Groups (2021-2023)

Group	Elective Subjects		
ICS	Physics	Mathematics	Computer Science
ICS	Statistics	Mathematics	Computer Science
ICS	Economics	Mathematics	Computer Science

3. Commerce Groups (2021-2023)

Group	Elective Subjects			
I. Com [Part-I]	Principles of Accounting	Principles of Economics	Principles of Commerce	Business Mathematics
I.Com [Part-II]	Principles of Accounting	Commercial Geography	Banking	Statistics (Commerce)

4. Arts (Humanities) Groups / Faculty (2021-2023)

- Select only one subject from the following each group to complete three elective subjects.
- Select any one of the languages (English Literature, Urdu Adv., Arabic, French, Persian, Punjabi)

(Note) Candidates cannot be allowed to take two languages as elective subject.

Faculty	Elective Subjects		Languages (any one of them)
Arts (Humanities)	Geography	Economics	English Literature
	Psychology	Philosophy	Urdu Advance
	Fine Arts	Civics	Arabic
	Mathematics	Education	French
	Health and Physical Education	Sociology	Persian
	History of Islam / History of Pakistan	Statistics	Punjabi
	Islamiyat	---	---

(Note) In case any student (only for Arts group) wants to change the group of elective subjects, she shall apply for the same within one week from the date of admission on a prescribed form to be obtained from the Principal's office for Rs. 200/-. However, the students are advised to choose the group/faculty (subjects) carefully, before applying for admission.

Students who wish to study Fine Arts and English Literature are required to qualify an Aptitude Test on the date notified by the College before admission. Participation in the march-past on Sports day is compulsory for the students studying Physical Education. Students selected on sports seats will take Physical Education as an elective subject.

Students must apply separately for each faculty if interested because all faculties have separate merit and no form is interchangeable for another faculty. Change of subject / faculty is possible on merit only subject to the availability of vacancy.

INTERMEDIATE SELF SUPPORTING (EVENING PROGRAMS)

Compulsory Subjects

All students of Science and Arts will study the following compulsory subjects:

1. Urdu (However, foreign Students will study Pakistan Culture, after seeking prior permission from the B.I.S.E. Lahore.)
2. English
3. Islamic Education / Civics, Ethics (option for Non-Muslim Students) in Part-I
4. Pakistan Studies in Part-II

1. Science Groups (2021-2023)

Group	Elective Subjects		
Pre-Medical	Physics	Chemistry	Biology
Pre-Engineering	Physics	Chemistry	Mathematics

2. ICS Groups (2021-2023)

Group	Elective Subjects		
ICS	Physics	Mathematics	Computer Science
ICS	Statistics	Mathematics	Computer Science
ICS	Economics	Mathematics	Computer Science

3. Commerce Groups (2021-2023)

Group	Elective Subjects			
I. Com [Part-I]	Principles of Accounting	Principles of Economics	Principles of Commerce	Business Mathematics
I.Com [Part-II]	Principles of Accounting	Commercial Geography	Banking	Statistics (Commerce)

4. Arts (Humanities) Groups / Faculty (2021-2023)

- Select only one subject from the following each group to complete three elective subjects.
- Select any one of the languages (English Literature, Urdu Adv., Arabic, French, Persian, Punjabi)

(Note) Candidates cannot be allowed to take two languages as elective subject.

Faculty	Elective Subjects		Language (any one of them)
Arts (Humanities)	Geography	Economics	English Literature
	Psychology	Philosophy	Urdu Advance
	Fine Arts	Civics	Arabic
	Mathematics	Education	French
	Health and Physical Education	Sociology	Persian
	History of Islam / History of Pakistan	Statistics	Punjabi
	Islamiyat	---	---

(Note) In case any student (only for Arts group) wants to change the group of elective subjects, she shall apply for the same within one week from the date of admission on a prescribed form to be obtained from the Principal's office for Rs. 200/-. However, the students are advised to choose the group/faculty (subjects) carefully, before applying for admission. Students who wish to study Fine Arts and English Literature are required to qualify an Aptitude Test on the date notified by the College before admission. Participation in the march-past on Sports day is compulsory for the students studying Physical Education. Students selected on sports seats will take Physical Education as an elective subject. Students must apply separately for each faculty if interested because all faculties have separate merit and no form is interchangeable for another faculty. Change of subject / faculty is possible on merit only subject to the availability of vacancy.

Bachelor Program

An overview of LCWU's Bachelor Program would help you to identify your interests and aptitude, and facilitate planning for your future while choosing subjects to study.

• B.S. (4-Year Degree Course)

LCWU offers B.S Program in 42 disciplines as given below:

Architecture, Biotechnology, Botany, Chemistry, City and Regional Planning, Physics, Zoology, Economics, Mathematics, Gender and Development Studies, Geography, Statistics, Sociology, History, Home Economics, Environmental Science, English, Urdu, Punjabi, Applied Psychology, Political Science, Pakistan Studies, International Relations, Mass Communication, Education, Social Work, Islamic Studies, Arabic, Persian, Physical Education, Philosophy, BBA, B.Com, BPA, B. Electrical Engineering, BFA [Graphic Design, Visual Arts, Interior Design, Craft and Textile Design], Computer Science.

M.Sc. / M.A. (After 14-Years of Education)

- Biotechnology
- Chemistry
- Zoology
- TESOL
- MFA (Graphic Design)

Year Degree Program

- Architecture
- Physical Therapy

Pharm-D

M.S Program (After 16 Years of Education)

LCWU offers M.S Program in 27 disciplines as given below:

Biotechnology, Botany, Chemistry, City and Regional Planning, Computer Science, Economics, English Literature, Environmental Science, Electrical Engineering, Education, M.S Fine Arts Studio Practice, History of Arts, Health Psychology, Gender and Development Studies, Islamic Studies, Management Science, Mass Communication, Mathematics, Physics, Political Science, Persian, Punjabi, Statistics, Urdu, TESOL, Zoology, History.

M.PHIL.(Pharmacy) Program (After 16 Years of Education)

LCWU offers M. Phil (Pharmacy) Program in 05 disciplines as given below:

Pharmacology, Pharmacy Practice, Pharmacognosy, Pharmaceutics, Pharmaceutical Chemistry

Ph.D. Program

Besides offering Post-graduate courses in 20 disciplines, the Ph.D. programs are being offered in the following subjects:

Applied Psychology, Biotechnology, Botany, Chemistry, Computer Science, City and Regional Planning, Education, Environmental Science, Fine Arts, Islamic Studies, Mass Communication, Mathematics, Management Science, Physics, Pharmacology, Political Science, Punjabi, Persian, Urdu, Zoology.

Academic Departments (Faculty)

Department of Arabic

- **Ms. Rahat Ajmal**, Ph.D. (Scholar), M. Phil (PU), M.A (PU), Principal / Assistant Prof.
- **Dr. Qurat-ul-Ain Tahira**, Ph.D., M.A [Arabic and Isl.], B.Ed. (PU), Assistant Prof.
- **Ms. Sobia Maryam**, Ph.D. (Scholar) M.Phil. (PU), Lecturer
- **Ms. Hafiza Farwa Iftikhar**, Ph.D. (Scholar) M.Phil. (MUL), Lecturer

Visiting Staff:

- **Ms. Seemab Jamil**, M. Phil. (GCU), Enrolled in Ph.D. M.A (PU) Gold Medalist, Visiting Lecture Department of Applied Psychology
- **Prof. Dr. Naheed Atta**, Ph.D. (PU), M. Phil. (QAU), M.Sc. (PU), Professor
- **Ms. Naima Azra**, M.A. (GCU), Associate Prof.
- **Dr. Amina Muazzam Butt**, Ph.D., M.Sc. (PU), Tenured Assistant Prof. Head International Resource Centre Active Citizen Program (LCWU)
- **Ms. Amina Obaid Khawaja**, M.Phil. (GCU), M.Sc. (PU), Assistant Prof.
- **Dr. Amina Khawar**, Ph.D., M.S (LCWU), M.Sc. (PU), Assistant Prof.
- **Dr. Nudra Malik**, Ph.D., M.S (LCWU), M.Sc. (PU), Assistant Prof.
- **Dr. Umm-e-Rubab**, Kazmi Ph.D. (LCWU), M.S, M.Sc. (GCU), Assistant Prof.
- **Ms. Sana Belal**, M.Sc. (PU), Lecturer
- **Dr. Saima Eman**, Ph.D. (The University of Sheffield, UK), M.Sc. (UK), Lecturer
- **Ms. Bisma Zubair M.S.**, M.Sc. (LCWU), Lecturer (on study leave)
- **Ms. Saima Ahmad M.S**, M.Sc. (PU), Lecturer (on study leave)

- **Ms. Maryam Bawer**, M.Phil. (GCU), M.Sc. (NICE), Lecturer
- **Ms. Toseef Imtiaz**, M.Phil., M.Sc. (PU), Lecturer (on study leave)
- **Ms. Marium Gul Agha**, M.Phil. (GCU), M.Sc. (NICE), Lecturer
- **Ms. Tehziba Kausar**, M.S. (LCWU), Lecturer

Department of Botany

1. **Prof. Dr. Farah Khan**, Post. Doc. (USA), Ph.D. (PU), M.Sc., HOD
2. **Dr. Tehreema Iftikhar**, Post-Doc. (Cornell, USA), Ph.D. (GCU), Ph.D. Fellowship (SNU, South Korea), M. Phil., M.Sc. (PU), Associate Prof.
3. **Dr. Zubaida Yousaf**, Post. Doc. (China), Ph.D. (Q.A.U.), M.Sc. (U.A.A), Associate Prof.
4. **Dr. Shabnam Shaheen**, Post. Doc. (Malaysia), Ph.D. (Q.A.U), M.Sc. (U.A.A), Assistant Prof.
5. **Dr. Sumera Iqbal**, Ph.D. (LCWU), M.Sc. (U.A.A), Assistant Prof.
6. **Dr. Khajista Jabeen**, Ph.D. (PU), M.Sc., Assistant Prof.
7. **Dr. Sumera Javad**, Ph.D. (LCWU), M.Sc. Gold Medalist, Assistant Prof.
8. **Dr. Samina Sarwar**, Ph.D. (PU) Ph.D. IRSIP Fellowship (UK), M.Sc., Assistant Prof.
9. **Ms. Mobina Ulfat**, M. Phil (UAF), M.Sc., Assistant Prof.
10. **Dr. Sobia Ilyas**, Ph.D. (LCWU), Ph.D. IRSIP Fellowship (USA), BS (Hons) (PU), Asstt.Prof.
11. **Dr. Sana Khalid**, Ph.D. (Specialization in Molecular Virology) M. Phil, M.Sc. ((PU), Assistant Prof.
12. **Dr. Kiran Shahzadi**, Ph.D. (LCWU), M. Phil (GCU), M.Sc. (PU), Assistant Prof. (on adhoc)
13. **Dr. Riffat Shahid**, Ph.D. (LCWU), M.Sc. (PU), Assistant Prof. (on adhoc)
14. **Dr. Hannan Mukhtar**, Ph.D. (LCWU), M.Sc. (PU), Assistant Prof. (on adhoc)
15. **Dr. Amina Tariq**, M.Phil., M.Sc. (GCU), Assistant Prof. (on adhoc)
16. **Ms. Aroosa Aftab**, M.Phil., M.Sc. Gold Medalist (GCU), Lecturer
17. **Ms. Zaryab Khalid**, M.S (LCWU), Lecturer

Supporting Staff:

1. **Ms. Shaheen Qasim**, Lecture Assistant

Department of Chemistry

1. **Dr. Bushra Naseem**, Ph.D. (QUA), M.Phil., Assistant Prof. (TTS) / HOD
2. **Dr. Erum Akbar Hussain**, Ph.D. (KU), M.Sc., Assistant Prof. (TTS)
3. **Dr. Shahida Shujat**, Ph.D. (KU), M.Phil. (QUA), Assistant Prof. (TTS)
4. **Dr. Sadia Rashid Tariq**, Ph.D. (QUA), M.Phil., Assistant Prof. (TTS)
5. **Dr. Abida Yasmeen**, Ph.D. (QUA), M.Phil., M.Sc. (UAF), Assistant Prof. (TTS)
6. **Dr. Sana Ahmad**, Ph.D. (France), M.Sc. Hons. (PU) Assistant Prof. (TTS)
7. **Dr. Yusra Safa**, Ph.D. (UAF), M.Sc. Assistant Prof. (TTS) (on leave)
8. **Dr. Shahnaz**, Ph.D. (HEJ), M.Sc. (HEJ), Assistant Prof.
9. **Dr. Fouzia Irum**, Ph.D. (PU), M.Phil. (GCU), M.Sc. (PU), Assistant Prof.
10. **Dr. Rehana Kausar**, Ph.D. (South Korea), M. Phil. (BZU), Assistant Prof. (TTS)
11. **Ms. Syeda Nazish Arsha**, Ph.D. Scholar, M.S (LCWU), Lecturer
12. **Ms. Touseef Kazmi**, M.S (LCWU), Lecturer (on leave)

Department of Computer Science

1. **Prof. Dr. Muhammad Abuzar Fahiem**, Ph.D. (UET), Professor
2. **Dr. Nadia Kanwal**, Ph.D., M.Sc. (Essex, UK), Assistant Prof. (on leave)
3. **Dr. Saima Farhan**, Ph.D., MS-CS (LCWU), Associate Prof. Chairperson

4. **Dr. Huma Tauseef**, Ph.D., MS-CS (LCWU), Associate Prof., Director Student Affairs
5. **Dr. Mariam Nosheen**, Ph.D., MS-CS (LCWU), Assistant Prof.
6. **Dr. Ayesha Iqbal**, Ph.D., MS-CS (LCWU), Assistant Prof.
7. **Dr. Maria Saleemi**, Ph.D., MS-CS (LCWU), Assistant Prof.
8. **Dr. Komal Bashir**, Ph.D., MS-CS (LCWU), Assistant Prof.
9. **Ms. Humaira Kauser**, MS-CS (LCWU), Assistant Prof.
10. **Dr. Faria Kanwal**, Ph.D., MS-CS (LCWU), Assistant Prof.
11. **Dr. Maria Anjum**, Ph.D. (Durham, UK), Assistant Prof.
12. **Dr. Fahima Tahir**, Ph.D., MS-CS (LCWU), Assistant Prof.
13. **Dr. Ayesha Afzaal**, Ph.D., MS-CS (UET), Assistant Prof.
14. **Dr. Fatima Anjum**, Ph.D., MS-CS (UAF), Assistant Prof.
15. **Ms. Sidra Rafique**, MS-CS (GCU), Lecturer
16. **Ms. Rabia Javed**, MS-CS (LCWU), Lecturer (on leave)
17. **Ms. Khansa Atif**, MS-CS (LCWU), Lecturer
18. **Ms. Tahreem Iqbal**, MS-CS (LCWU), Lecturer (on leave)

Supporting Staff:

1. **Ms. Wajeeha Malik**, MS-CS (LCWU), Computer Instructor
2. **Ms. Ambreen Amna**, MS-CS (LCWU), Computer Instructor
3. **Ms. Attia Anis**, MS-CS (LCWU), Computer Instructor

Technical Staff:

1. **Dr. Usman Ahmad**, Assistant Database Administrator
2. **Ms. SyedaSaira Kazmi**, Web Coordinator
3. **Mr. Muhammad Javed Iqbal**, Assistant Data Processor
4. **Ms. Rabia Zahoor**, Computer Lab Supervisor
5. **Ms. Amna Alamgir**, Computer Lab Supervisor
6. **Ms. Affifa Gul**, Computer Lab Supervisor
7. **Mr. Muhammad Naeem**, Computer Lab Supervisor
8. **Mr. Muhammad Asim**, Computer Lab Supervisor
9. **Mr. Muhammad Athar**, Computer Lab Supervisor
10. **Mr. Shakeel Zada**, Computer Lab Supervisor

Department of Economics

1. **Dr. Muhammad Afzal**, Ph.D. (PU), M. Phil (GCU), M.A. (PU), Professor
2. **Dr. Samia Nasreen**, Ph.D. (GCUF), M.Phil. (PU), M.Sc. (LCWU), Associate Prof.
3. **Ms. Uzma Shahid**, M.Phil. (GCU), M.A (PU), Assistant Professor (on study leave)
4. **Ms. Tayyaba Rizvi**, M.Phil. (PU), M.Sc. (LCWU), Assistant Professor (on study leave)
5. **Ms. Ramsha Saleem**, M.Phil. (BZU), M.Sc. (IUB), Assistant Professor
6. **Dr. Ammara Amjad Hashmi**, Ph.D., M.Phil. (SU), M.A.(PU), Assistant Prof.
7. **Ms. Erum Aziz**, M.Phil. (LCWU), M.A. (PU), Lecturer
8. **Ms. Asma Khalid**, M.Phil. (GCU), M.Sc. (LCWU), Lecturer
9. **Ms. Hafsa Batool**, M.Phil. (LCWU), M.A. (SU), Lecturer
10. **Ms. Mehtab Arif**, M.Phil. (LCWU), M.Sc. (QAU), Lecturer (on study leave)
11. **Ms. Javaria Jamil**, M. Phil. (COMSATS), M.Sc. (GCU), Lecturer
12. **Ms. Naghmana Ghaffor**, M.Phil. (GCU), M.A (P.U), Lecturer (on study leave)

13. **Dr. Mehr-un-Nisa**, Ph.D. (UOK), M.Phil. (AERC.UOK), M.A (IUB), Lecturer
14. **Ms. Samreen Munawar**, M.Sc.(Hons) (UAF), B.S. (Hons) (UAF), Lecturer (on leave)
15. **Ms. Sajida Wajid**, M.Phil. (PU), M.A (PU), Lecturer
16. **Ms. Amna Rubab**, M.Phil. (PIDE), B.S (Hons) (KC), Lecturer
17. **Ms. Marium Shafi**, M.Phil. (PIDE), M.Sc. (PU), Lecturer (on study leave)
18. **Ms. Duryab Fatima**, M.Phil. (LSE), B.Sc. (Hons) (LSE), Lecturer
19. **Ms. Hina Amber**, M.Phil., B.S (Hons) (GCU), Lecturer (on study leave)
20. **Ms. Khadija Zafar**, M.Phil. (FCCU), B.S (Hons) (LCWU), Lecturer
21. **Ms. Zainab Khan**, M.Phil., M.Sc. (QAU), Lecturer (on study leave)

Department of Education (Planning and Development)

1. **Dr. Ghazala Noureen**, Post-Doc., Ph.D., (UK), HOD / Associate Prof.
2. **Dr. Ayesha Batool**, Ph.D. (PU), Assistant Prof.
3. **Ms. Romanan Imran**, Lecturer (on Study leave)
4. **Ms. Sadiya Iqbal**, Ph.D. (Scholar), Lecturer.
5. **Ms. Iqra Toor**, M.S, B.S. Hons. (LCWU), M.A, Lecturer (on ex-Pakistan leave)
6. **Ms. Iqra Asim**, M.S. (PU), Lecturer
7. **Ms. Naila**, M.S. (LCWU), Lecturer
8. **Ms. Shazia**, Ejaz Ph.D., (Scholar), Teaching Assistant
9. **Ms. Rakhshanda Naeem**, Ph.D. Scholar, M.S (LCWU), M.Ed. (Uni. of Education), TeachingAssistant

Visiting Faculty:

1. **Dr. Faiza**, Ph.D. (PU), Professor
2. **Ms. Zainab Salman**, M.S. Scholar, M.F.A (PU), Lecturer
3. **Ms. Lubna Shahzadi**, Ph.D. Scholar, M.S Education (LCWU), M.A. History (PU), Lecturer
4. **Ms. Hira Akash**, M.S Electrical Engineering (LCWU), B.E. (LCWU), Lecturer
5. **Ms. Sidra Younis**, Ph.D. Scholar, M.S Botany (LCWU), Lecturer
6. **Ms. Nadia Saleem**, Ph.D. Scholar (PU), M.S (LCWU), M.A., Lecturer
7. **Ms. Tahseen Arshad**, Ph.D. Scholar, M.S., (LCWU), Lecturer
8. **Ms. Madiha Zahid**, Ph.D. Scholar, M.S. (LCWU), Lecturer
9. **Ms. Sadia Tariq**, M.S., B.S. (LCWU), Lecturer
10. **Ms. Misham Israr**, Ph.D. Scholar, M.S. (LCWU), Lecturer
11. **Ms. Anum Noushaba**, M.S., B.S. (LCWU), Lecturer
12. **Ms. Shahzaib Chudhary**, M.S., B.S. (LCWU), Lecturer

Department of English

1. **Ms. Fatima Hassan**, Ph.D. Scholar, M.S (LCWU), M.A (LCWU) Assistant Prof.
2. **Dr. Amara Khan**, Ph.D. (Leeds UK), M.S (TESOL), Assistant Prof./ Incharge
3. **Ms. Nadia Sheheryar**, M.S (LCWU), M.A (LCWU), Lecturer
4. **Ms. Aniq Munir**, Ph.D. Scholar, M.S (LCWU), M.A (LCWU), Lecturer
5. **Ms. Ammara Iqbal**, Ph.D. Scholar, M.S (LCWU), M.A (PU), Lecturer
6. **Ms. Yasmeen Manzur**, M.S. Scholar (LCWU), M.A (GCU), Lecturer
7. **Ms. Nabia Fakhar**, M.S. (KC), M.A (PU), Lecturer
8. **Ms. Aaisha Umt-ur-Rashid**, M.S. (LCWU), M.A (LCWU), Lecturer
9. **Ms. Sarah Abdullah**, M.S. (PU), M.A (LCWU), Lecturer
10. **Ms. Sadaf Javed**, M.S. Scholar (LCWU), M.A (KC), Lecturer

11. **Ms. Tahira Khanum**, Ph.D. Scholar (UMT), M.Phil. (UMT), M.A (PU), B.Ed., Lecturer
12. **Ms. Fareeha Saeed**, M.S (LCWU), Lecturer
13. **Ms. Samina Ayub**, M.S (LCWU), Lecturer
14. **Ms. Sadia Nazir**, M.S (LCWU), Lecturer
15. **Ms. Masooma Zaidi**, M.S (LCWU), Lecturer
16. **Ms. Anum Tariq**, M.S (LCWU), Lecturer
17. **Ms. Rabia Ashraf**, M.S (LCWU), Lecturer
18. **Ms. Amna Shahid**, M. Phil ELT (K.C), Lecturer
19. **Ms. Hina Saleem Khan**, M.S (COMSATS University, Islamabad), Lecturer
20. **Ms. Hina Nadeem**, M.S Scholar (LCWU), Teaching Assistant

Department of Fine Arts

1. **Prof. Dr. Rifaat Saif Dar**, Ph.D. Fine Arts (LCWU), MFA (PU) (Gold Medalist), Incharge Faculty IVAD/ COD, Professor
2. **Prof. Masooma Abbas**, Ph.D. Fine Arts (LCWU), Professor / HOD DFDI
3. **Dr. Sadia Murtaza**, Ph.D. Fine Art (LCWU), M.A Fine Arts (Double Gold Medalist), Coordinator M.S Program IVAD / Assistant Prof.
4. **Ms. Rabia Yaseen**, Ph.D. Scholar, M.S Fine Arts (LCWU), M.A Fine Arts (2nd Position), Assistant Prof., (on study leave)
5. **Ms. Aasma Abdul Majeed**, Ph.D. Scholar, M.S Fine Arts (LCWU), Assistant Prof.
6. **Ms. Farah Khan**, M.S Fine Arts (LCWU, Gold Medalist), M.A. (PU, Gold Medalist), Assistant Prof.
7. **Ms. Aqsa Rehan**, Ph.D. Scholar (HNU, China), M.S Fine Arts (LCWU), M.A Fine Arts (LCWU), Assistant Prof., (on study leave)
8. **Ms. Laiqa Iqbal**, M.S. (Studio Practice-LCWU), M.A Fine Arts (PU), Assistant Prof.
9. **Mr. Arfan Javed Augustine**, M.A (Hons), B.F.A Hons. (NCA), Lecturer
10. **Ms. Roohi Jamal Noor**, M.S Fine Arts (LCWU), Lecturer
11. **Ms. Rehana Aleem**, M.A Fine Arts (LCWU), Lecturer
12. **Ms. Noureen Rasheed**, M.S. Fine Arts (LCWU), B.F.A (NCA), Lecturer
13. **Ms. Sidra Liaqat**, M.S Fine Arts, B.F.A (LCWU, Gold Medalist), Assistant M.S. Coordinator IVAD, Curator NHQ Gallery, IVAD, Lecturer
14. **Mr. Shiblee Muneer**, B.F.A (BNU), Lecturer
15. **Ms. Amber Munir**, Ph.D. Scholar, M.S Fine Arts (LCWU), Assistant Exam Coordinator, Lecturer
16. **Ms. Sobia Maqsood**, Ph.D. Scholar, M.S Fine Arts (LCWU), Lecturer
17. **Ms. Tayyaba Naeem**, M.F.A (LCWU), Incharge Stock, Incharge Short Courses / Diploma Class, Lecturer

Visiting Staff:

1. **Ustad Irfan Ahmed Khan**, Assistant Professor
2. **Mr. Muhammad Abrar**, Lecturer
3. **Ms. Sundas Azeem Quraishi**, Lecturer
4. **Ms. Saffah Mustafa**, Lecturer
5. **Ms. Sehar Jameel**, Lecturer
6. **Ms. Sehar Amjad**, Lecturer
7. **Ms. Zulaikhan Naseem**, Lecturer
8. **Ms. Azka Naseem**, Lecturer

Technical Staff:

9. **Mr. Naveed Ahmed**, Kiln Operator
10. **Mr. Muhammad Usman**, Junior Clerk
11. **Mr. Rana Abdul Mateen**, Computer Lab Assistant
12. **Mr. Attiqueur Rehman**, Sculpture Caster
13. **Mr. Patras Ghulam**, Caster / Laminator
14. **Ms. Sara Altaf**, Library Clerk (Visiting)

Department of Geography

1. **Dr. Aysha Faisal**, Ph.D (CSAS), M.Phil. (CSAS), M.Sc. (PU), Diploma in GIS (PIMS), Assistant Professor & Incharge
2. **Dr. Nausheen Mazhar**, Ph.D (PU), Fellowship (University of Leeds, UK), M.S (GCU), M.Sc., M.A. English Lit. (PU), PGD (PIMS), Lecturer
3. **Dr. Sahar Zia**, PhD (PU), M. Phil (PU), B.S. (PU), Lecturer
4. **Ms. Rehana Mehar Ali**, M.S, B.S (GCU), Lecturer
5. **Ms. Anum Afzal**, M.S. (GCU), M. Sc. (PU), Lecturer

Department of History

1. **Dr. Sumaira Noreen**, Ph.D., M.Phil. (UK), M.A. (University of Peshawar), Assistant Prof. / HOD
2. **Dr. Gull-i-Hina**, Ph.D. (PU), M.Phil. (GCU), Assistant Prof.
3. **Ms. Kalsoom Hanif**, Ph.D. Scholar, M.Phil. (PU), M.A. Gold Medalist, Lecturer
4. **Ms. Farzanda Aslam**, Ph.D. Scholar, M.Phil., M.A. (GCU), Lecturer
5. **Ms. Fauzia Rashid**, Ph.D. Scholar, M.Phil. (PU), M.A. (PU), M.Ed. (AIOU), Lecturer

Department of Home Economics

1. **Dr. Mehreen Ijaz**, Ph.D. (PU), M.Phil. (PU), Assistant Prof.
2. **Dr. Shama Sadaf**, Ph.D., M.Phil. (PU), Assistant Prof. (on adhoc)
3. **Ms. Munaza Usman**, Ph.D. Scholar, M. Phil. (PU), Lecturer on Ex-Pakistan Leave
4. **Ms. Namood-e-Sahar**, Ph.D. Scholar, M. Phil. (PU), Lecturer
5. **Ms. Ayesha Saeed**, Ph.D. Scholar, M.Phil. (PU), Lecturer
6. **Ms. Rafia Fatima**, M.Phil. (PU), Lecturer
7. **Ms. Zohra Tariq**, M.Phil. (UAF), Lecturer
8. **Ms. Zahra Rasheed**, M.Phil. (PU), Lecturer
9. **Ms. Ayesha Nawaz**, Ph.D. Scholar, M.Phil. (LCWU), Teaching Assistant
10. **Ms. Hiba Munir Dar**, M. Phil (LCWU), Teaching Assistant
11. **Ms. Madeeha Tariq**, M. Phil (LCWU), Teaching Assistant
12. **Ms. Komal Hassan**, M. Phil (PU), Teaching Assistant

Department of Islamic Studies

1. **Dr. Zahida Shabnum**, Ph.D. (LCWU), M.Phil. (AIOU), M.A. (Isl. and Arabic), MOL, Associate Prof. (TTS) / HOD
2. **Dr. Asia Shabbir**, Ph.D., M.A. (PU), Associate Prof. (TTS)
3. **Dr. Sadaf Sultan**, Ph.D., M.Phil., M.A., (PU), Assistant Prof.
4. **Dr. Memuna Tabassum**, Ph.D. (UOK), M.Ed. (AIOU), M.A. (IUB), Assistant Prof.
5. **Dr. Salma Mahmood**, Ph.D., M.Phil. (PU), M.A. (Urdu and Isl. Std.), B.Ed. (PU), Assistant Prof.
6. **Dr. Tahira Abdul Qaddus**, Ph.D., M.Phil. (PU), M.A. (Isl. Std. and Arabic), B.Ed. (AIOU), Assistant Prof.

7. **Dr. QudsiaBano**, Ph.D., M.S., M.A. (LCWU), Assistant Prof.
8. **Ms. Fariha Anjum**, M.S. (LCWU), M.A. (PU), Lecturer

Department of Management Sciences

1. **Dr. Muhammad Fiaz**, Ph.D., M.S. (North Western Poly Technical Uni. Xian China), Associate Prof.
2. **Ms. Rabia Asif**, Ph.D. Scholar, M.S (COMSATS), Assistant Prof. / Incharge
3. **Ms. Fouzia Ashfaq**, Ph.D. Scholar, M.S (Australia), M.B.A (PU), Assistant Prof.
4. **Ms. Nadia Noor**, Ph.D. Scholar, M.S (PU), Assistant Prof. (on study leave)
5. **Ms. Beenish Neik**, M.S (UK), Assistant Prof.
6. **Ms. Maryam Gull**, M.S (LCWU), Assistant Prof.
7. **Ms. Sehrish Ilyas**, Ph.D. Scholar, M.S (LCWU), Assistant Prof.
8. **Dr. Adeel Nasir**, Ph.D. (COMSATS), Assistant Prof.
9. **Ms. Malahat Jatoi**, M.S. (LCWU), Lecturer
10. **Ms. Huma Abid**, M.S. (LCWU), M.Com. (PU), Lecturer
11. **Ms. Anum Nazir**, M.S. (LCWU), Lecturer
12. **Ms. Rabia Aslam**, M.Phil. (UCP), Lecturer
13. **Ms. Shaista Jabeen**, Ph.D. Scholar, M.S (PU), Lecturer
14. **Ms. Asvir Naveed**, Ph.D. Scholar, M.S (PU), Lecturer
15. **Ms. Mobina Farasat**, Ph.D. Scholar, M.S (LCWU), Lecturer
16. **Ms. Maryam Saeed**, Hashmi Ph.D. Scholar, M.S (COMSATS), Lecturer (on study leave)
17. **Ms. Pakeeza Butt**, Ph.D. Scholar, M.S. (PU), Lecturer (on study leave)
18. **Ms. Humaira Inayat**, Ph.D. Scholar, M.S (PU), Lecturer (on study leave)

Department of Mathematics

1. **Dr. Maria Hussain**, Ph.D (PU), M.Phil. (PU), M.Sc. (PU), Associate Prof.
2. **Dr. Uzma Bashir**, Ph.D. (USM-Malaysia), M. Phil (UET), M.Sc. (PU), Assistant Prof.
3. **Dr. ShaziaJaved**, Ph.D. (USM-Malaysia), M.Phil. (UET), M.Sc. (PU), Assistant Prof.
4. **Ms. Shamsalshaq**, M.Phil., M.Sc. (GCU), Assistant Prof.
5. **Dr. TahiraSumbal**, Shaikh Ph.D. (PU), M.Phil. (PU), M.Sc. (PU), Assistant Prof.
6. **Dr. Salma Kanwal**, Ph.D. (GCU), M.Sc. (PU), Assistant Prof.
7. **Dr. Saima Nazeer**, Ph.D. (LCWU), M.Phil., M.Sc. (PU), Assistant Prof.
8. **Dr. Sehrish Iftikhar**, Ph.D. (PU), M.S (COMSATS), M.Sc. (UET), Assistant Prof.
9. **Dr. Kanwal Nazir**, Ph.D., M.Phil. (PU), M.Sc. (UET), Assistant Prof.
10. **Dr. Sara Shafiq**, Ph.D., M.Phil., M.Sc. (GCU), Assistant Prof.
11. **Ms. TayybaArooj**, M. Phil. (PU), M.Sc. (LCWU), Lecturer
12. **Dr. Naila Sajid**, M.S (LCWU), Lecturer (on Leave)
13. **Ms. Sidra Saleem**, M.S (LCWU), Lecturer (on Leave)
14. **Ms. Sana Zahra**, M.S (GCU), Lecturer

Department of Persian

1. **Prof. Dr. Syeda Faleeha Zahra Kazmi** Ph. D. (GCU), M.Phil (GCU), M.A. (PU), Project Director (Iranology Centre), COD.
2. **Dr. Anjum Tahira** Ph.D. (GCU), M.Phil., M.A. (PU), B.Ed., Associate Prof.
3. **Dr. Shahida Alam** Ph.D. (PU), M.A (PU), Assistant Prof.
4. **Dr. Faiza Kiran** Ph.D. (Tehran Uni. Iran), M.Phil. (PU), M.A. (PU), Assistant Prof. (on adhoc)
5. **Dr. S. Sara Zahra Bukhari** Ph.D., M.Phil. (PU), M.A. (PU), Assistant Prof. (on adhoc)
6. **Ms. Maria Umer** M.S., B.S (Hons.) (LCWU), Lecturer
7. **Ms. Amber Zulfiqar** M.S., B.S (Hons.) (LCWU), Lecturer

Department of Philosophy

1. **Ms. Khadija Naz** Ph.D. (Scholar), M. Phil (PU), M.A, LLB (Karachi University), Lecturer

Department of Physical Education

1. **Ms. Humera Aziz Mughal** Ph.D. (Scholar), M.A (PU), HOD / Director Sports
2. **Ms. Sumera Sattar** Ph.D. (Scholar), Lecturer
3. **Ms. Wajiha Abid** M.Phil. (LCWU), Sports Instructor / Teaching Assistant
4. **Ms. Maria Nazir Cheema** M.Phil. (LCWU), Sports Instructor / Teaching Assistant
5. **Ms. Saman Junaid** M.Phil. (UOL), Sports Instructor / Teaching Assistant
6. **Ms. Anum Shafique** M.Phil. (Scholar), Sports Instructor / Teaching Assistant
7. **Ms. Syeda Maryam Zahra** M. Phil. (Scholar), Sports Instructor / Teaching Assistant
8. **Ms. Ghazala Amir** B.S. (LCWU), Sports Instructor / Teaching Assistant
9. **Mr. Muhammad Anis Ahmad** M.Sc. (UCP), Sports Instructor / Teaching Assistant

Department of Physics

1. **Prof. Dr. Zohra Nazir Kiyani** Ph.D., M.Sc. (PU), Professor / Chairperson
2. **Prof. Dr. Safia Anjum** Ph.D. (UET), M. Phil (QAU), M.Sc. (LCWU), Professor.
3. **Dr. Alliya Qamar** Ph.D. (LCWU), M.Phil., M.Sc. (PU), Assistant Prof.
4. **Dr. Aneeqa Sabah** Ph.D. (Thailand), M.Phil, M.Sc. (PU), Assistant Prof. (TTS)
5. **Dr. Shafaq Arif** Ph.D. (LCWU), M.Phil (UET), M.Sc.(GCU), Assistant Prof.
6. **Dr. Madeeha Riaz** Ph.D., M.S (LCWU), Assistant Prof. (Adhoc)
7. **Dr. Zeba Israr** Ph.D., M. Phil, M.Sc. (GCU), Assistant Prof. (TTS)
8. **Dr. Salma Wasim** Ph.D. (LCWU), M.Phil, M.Sc. (PU), Assistant Prof. (on adhoc)
9. **Dr. Tallat Zeeshan** Ph.D. (LCWU), M.Phil. (UET), M.Sc. (GCU), Assistant Prof.(on adhoc)
10. **Ms. Afshan Rashid** M.S (LCWU), M.Sc. Physics (PU), Lecturer
11. **Dr. Saima Khalid** Ph.D. (LCWU), M.Phil. (UET), M.Sc. (GCU), Lecturer
12. **Ms. Hina Irfan** MS (LCWU), M.Sc. (PU), Lecturer
13. **Ms. Rabia Khurram** M.S (LCWU), M.Sc. (PU), Lecturer

Department of Pakistan Studies

1. **Dr. Sobia Naseer** Ph.D., M. Phil (PU), M.Sc. (Q.A.U), Assistant Prof. / Incharge
2. **Ms. Afshan Aziz** M.S. (LCWU), M.A. (GCU), Assistant Prof.
3. **Ms. Bushra Zeeshan** M.A (LCWU), Lecturer
4. **Ms. Shakeela Hashim** Ph.D. (Scholar), M.Phil. (GCU), Lecturer
5. **Ms. Raheela Shafique** M.A. Pol. Sci., M.A. History (PU), Lecturer
6. **Ms. Nadira Shafi** M.S. (LCWU), B.S (LCWU), Lecturer
7. **Ms. Hamna Khan** M. Phil (PU), B.S. (LCWU), Lecturer

Department of Political Science

1. **Dr. Aisha Shahzad** Ph.D. (LCWU), M. Phil, M.A (PU), Assistant Prof.
2. **Dr. Sadia Mahmood Falki** Ph.D. (LCWU), M.Phil. (GCU), M.A (GCU), Assistant Prof.
3. **Dr. Saima Butt** Ph.D., M. Phil (PU), M.A. (LCWU), DIA (PU), Lecturer
4. **Ms. Sadia Ashraf Rana** Ph.D. Scholar, M.Phil. (PU), M.A (LCWU), DOM (PU), Lecturer

Department of Punjabi

1. **Dr. Mujahida Butt** Ph.D. (PU), M.Phil. EPM(AIOU), M.Sc. (Pak. Std. AIOU), M.Ed., M.A. (Punjabi, Urdu, Pol. Sc. PU), Professor / HOD
2. **Dr. Samina Batool** Ph.D. (LCWU), M.A. (PU), B.Ed., Associate Prof.
3. **Dr. Ayesha Rahman** Ph.D. (LCWU), M.A. (PU), B.Ed., Assistant Prof.
4. **Dr. Hina Khan** Ph.D. (LCWU), M.A. (PU) Gold Medalist, Assistant Prof.
5. **Dr. Saima Batool** Ph.D. (LCWU), M.S (LCWU) Gold Medalist, M.A (PU), L.L.B (PU), Assistant Prof. (on adhoc)
6. **Dr. Sonia Allah Rakha** Ph.D. (LCWU), M.S (LCWU) Gold Medalist, B.S(LCWU) Gold Medalist, Assistant Prof. (on adhoc)
7. **Dr. Marym Sarfraz** Ph.D., M.S. (LCWU) Gold Medalist, B.S(LCWU) Gold Medalist, Assistant Prof. (on adhoc)
8. **Ms. Almas Tahira** M.S. (LCWU), B.S(LCWU), Lecturer

Supporting Staff:

1. **Ms. Anila Sarwar**, Assistant
2. **Ms. Sehrish Iftikhar**, Assistant
3. **Ms. NomitaJaved**, Assistant
4. **Mr. Tasawar Ali**, Junior Clerk

Department of Statistics

1. **Dr. Asifa Kamal** Post Doc. (Southampton Uni.UK), Ph.D., M.Phil. (GCU), M.Sc., B.Ed. (PU), Associate Prof.
2. **Dr. Naila Amjad** Ph.D., M.Phil. (NCBA & E), M.Sc. (PU), Assistant Prof.
3. **Ms. Rashida Raheel** M.Phil., M.Sc. (GCU), Assistant Prof.

4. **Ms. Shazia Kashif** M.Phil. (GCU), M.Sc., M.A. Economics (PU), Assistant Prof.
(on ex-Pakistan leave)
5. **Dr. Mariyam Hafeez** Ph.D. (PU), M.Phil., M.Sc. (GCU), Assistant Prof.
6. **Ms. Tahira Bano** M. Phil, M.Sc. (PU), Assistant Prof.
7. **Ms. Naz Saud** M.Phil., M.Sc. (PU), Assistant Prof.
8. **Dr. Sadia Khalil** Post Doc. (North Carolina Uni. USA), Ph.D. (NCBA & E), M.Phil. (GCU),
M.Sc. (GCU), Assistant Prof.
9. **Ms. Sameena Irfan** M.Phil., M.Sc. (PU), Lecturer
10. **Ms. Afza Rasool** M.Phil., M.Sc. (PU), Lecturer (on study leave)
11. **Ms. Asma Zeb** M.Phil. (GCU), M.Sc. (LCWU), Lecturer
12. **Ms. Maria Aslam** M.Phil., M.Sc. (UAF), Lecturer
13. **Ms. Anum Fatima** M.S., B.S (LCWU), Lecturer
14. **Ms. Seher Saleem** M.S. (Uppsala Uni. Sweden), M.Sc. (UAF), Lecturer

Department of Urdu

1. **Dr. Rehana Kausar** Ph.D., M.Phil. (GCU), M.A., B.Ed. (PU), Associate Prof.
2. **Dr. Azmat Rubab** Ph.D. (PU), M.Phil. (AIUO), M.A (PU), Associate Prof.
3. **Dr. Tahira Sarwar** Ph.D. (LCWU), M.Phil. (GCU), M.A (LCWU), Associate Prof.
4. **Ms. Rohina Jafri** Ph.D. Scholar, M.S. (LCWU), M.A. (PU), Assistant Prof.
5. **Dr. Shazia Razzaq** Ph.D. (PU), M.Phil. (PU), M.A. (PU), B.Ed. (PU), Assistant Prof.
6. **Dr. Noreen Razzaq** Ph.D. (PU), M.Phil. (PU), M.A, B.Ed. (PU), Assistant Prof.
7. **Dr. Aziza Saeed** Ph.D., M.Phil. (GCU), M.A (GCU), Assistant Prof.
8. **Dr. Arooba Siddiqui** Ph.D. (Iqbalayat), M.A (PU), Gold Medalist, Assistant Prof.
9. **Dr. Qadeer Anjum** Ph.D. (PU), M.Phil. (GCU), M.A (PU), Assistant Prof.
10. **Dr. Naila Anjum** Ph.D. (GCU), M.Phil. (GCU), M.A (LCWU) B.Ed. (A.I.O.U.), Assistant Prof.
11. **Dr. Shabnam Niaz** Ph.D. (GCU), M.Phil. (GCU), M.A. (PU), B.Ed. (AIUO), Assistant Prof.
12. **Dr. Hina Kanwal** Ph.D. (GCU), M.Phil., M.A (BZU), B.Ed. (EU), Assistant Prof.
13. **Ms. Rafia Zubair** Ph.D. Scholar, M.S, B.S (LCWU), Lecturer
14. **Ms. Khizra Tabassum** M.Phil., M.A. (PU), Lecturer

Department of Zoology

1. **Prof. Dr. Farkhanda Manzoor** Post Doc. (USA), Ph.D. (PU), M.Sc. (PU), M.Ed.
(Sci. Edu.), PGD Environmental Law (PU), HOD.

Technical Staff:-

1. **Mr. Babar Amjad Khan**, Computer Hardware Technician
2. **Mr. Naveed Ahmad**, Lecture Assistant
3. **Mr. Tasvawar Hussain**, Lecture Assistant
4. **Mr. Tariq Akhlaq**, Lecture Assistant

Admission Rules

Admission to various classes at Lahore College for Women University, Lahore is granted on merit in accordance with the rules and policy of the Government of the Punjab, on the dates notified by the Lahore Board. Admission notice is duly advertised in the local newspapers, with the condition that no application form will be accepted after the notified last date. Subsequent to the completion of all the necessary stages of admission, the lists of successful candidates selected on merit, are displayed on the official website. The admission of the student's who fail to pay their dues in time, is cancelled.

Application Procedure

1. The candidates are required to fill out online admission forms for F.A / F.Sc. all seats (open merit, reserved and additional seats).
2. Every candidate is required to enclose attested photocopies of the following compulsory documents with her form.
 - a. Detailed marks sheet of Matriculation (Three copies).
 - b. Result cards of O-Level and Equivalence Certificate (Two copies attested by I.B.C.C office) (for O-Level Students only)
 - c. Provisional / Character Certificate from the Head of the institution last attended.
 - d. Photocopy of Migration certificate and two photocopies of the certificate from the former Board (this condition is for those candidates who have passed their matriculation examination from other Boards).
 - e. Two photocopies of the National Identity Card of Father and Guardian.
 - f. Monthly income certificate of Father / Guardian.
 - g. Two copies of "Bay Form" (NADRA) on (compulsory basis).
 - h. Three photographs with white background (non-attested) size 1.5"x .5" inch
 - i. 18 Years old or above 18 years candidates must provide N.I.C (two copies) at the time of admission.
3. The selected candidates are required to bring all original documents and one attested copy of Result Card, Original No Objection Certificate (NOC, only for other Boards), three 1.5"x 1.5" inch photographs (with white background) at the time of depositing the College dues otherwise they will not be allowed to submit the dues.
4. The candidate must not be above 18 years of age on the last date of the receipt of admission forms.
5. Admission on general seats is granted strictly on merit.

Important Note:-

As per the online Lahore Board “Registration and Admission System” students cannot be admitted / registered with Lahore Board from two institutions simultaneously. Therefore, a candidate having been admitted in any other college of Lahore Board jurisdiction must have to quit that and have her online board registration through that institution cancelled. In case she fails to do so her admission at LCWU would be considered cancelled. If any student wants to quit from LCWU after seeking admission due to any reason she must inform the Principal’s office through a written application, otherwise she will be responsible for subsequent complications during her academic session. It is mandatory for all students to fulfill board registration and admission forms (signature and thumb impression) in Part-I and Part-II.

Reserved Seats

1. Disabled Student Seats

2% of the total seats are reserved for physically challenged students. Candidates must enclose certificate of their physical disability signed by the M.S. Services Hospital with their forms and appear for interview on the date notified. Physical disability means disability which cannot be rectified by any equipment. Short sightedness and being hard of hearing do not fall under the definition of disability.

2. Sports Seats

2% of the total seats are reserved for Sports basis (only for Humanities Group). Only District / Board level players can apply against these seats.

3. Foreign Students Seats

15 seats are reserved for foreign students. They may apply to the Ministry of Education, Islamabad through their Embassy. They will be required to pay Rs. 90,750/- along with normal fee for Part-I and Part-II separately.

Important Note: -

Foreign student’s fee is non-refundable. It can only be refunded if the name of the student falls on the subsequent merit list and she does not desire to continue her studies at other participating institutions.

4. Senior Cambridge / O' Level Students

10% seats are reserved for the Senior Cambridge / O-level students. They will apply for admission along with the Matriculation students. The candidates seeking admission in F.Sc. must have studied Science Subjects in O-level / Senior Cambridge. They must have passed four elective subjects along with the compulsory subjects. The selected candidates must submit their result cards and Equivalence Certificates (Two copies attested by I.B.C.C office) with their forms, otherwise they will not be registered with B.I.S.E Lahore.

5. Additional Seats

Total 30 seats are reserved (5 seats each) for FATA and KPK, Azad Jammu and Kashmir, and other Provinces. Application of these candidates will be entertained only if they have passed their Matriculation Examination from a School situated in the respective area. They should apply through their respective Provincial Govt. Education Department.

Migration

Local migration is not allowed. Migration from other cities according to the B.I.S.E, Lahore rules, is allowed only on fulfillment of the following conditions: -

1. Transfer of a parent's job or transfer of residence of parents.
2. The candidate's Matric marks should not be below the College merit.
3. Payment of College dues per annum at the time of migration is compulsory.
4. Students migrating from other cities are not eligible for hostel accommodation.

Important Note: -

The college administration reserves the right to cancel the provisional admission / migration of a candidate, if at any stage after the admission / migration, it comes to their knowledge that the documents presented by her are fake or there is a mis-statement or clerical error in the documents.

College Roll Number / Section Slip

After payment of dues, each candidate is required to see the teachers on duty and get the College Roll No. and Section issued at the back of fee receipt otherwise her admission will be considered cancelled. In case of loss of fee slip, a duplicate can be issued on the payment of a fine of Rs. 100/- only. Change of Roll No. or Section is strictly prohibited with no exceptions.

Examinations

The Board of Intermediate and Secondary Education require the students to appear for Part-I and Part-II examinations separately.

All the students of Part-I and Part-II are required to appear for internal Send-Up examinations before the final examination otherwise their admission forms will be withheld. Monthly class tests are compulsory for all students and their marks will be counted towards the final assessment of internal grading.

The College is authorized to withhold the admission of any student whose attendance is less than 75% or if she is found guilty of gross misconduct. A fine of Rs. 500/- per subject shall be levied upon students who fail to show 75% attendance and Rs. 200/- per subject if a student fails to appear in the Send-Up examinations.

Medals

Students securing 1st position in the Lahore Board will be awarded Gold Medals by LCWU in their respective faculty.

Leave Rules

1. Leave is granted only in case of genuine need.
2. Leave up-to three days maximum can be granted in a month.
3. Students should apply for leave on medical grounds within a week of falling ill and it must be accompanied by a medical certificate from any government hospital duly verified by the Resident Doctor, LCWU. Leave for more than a month on medical grounds will not be granted.
4. The student must write clearly her Roll No, Name, Class, Section and subjects on the leave application, get it signed by parents and submit it to the leave account incharge in case of three days leave, and to the concerned in charge in case of leave for more than three days.

Attendance rules and schedule of fines for Absence / Misconduct

The schedule for fines due to absence is as follows:

1. Students of Part-I and Part-II must recheck their registration Form and admission Form before signing. After which this office shall not be responsible for any correction from BISE, Lahore.
2. A warning (SMS) for the reported month will be issued in the subsequent month to the parents of the students who remain absent in their relevant subjects.
3. The students who remain absent in any subject and their attendance is less than 75% will not be allowed to sit for B.I.S.E Exams.
3. The students who remain absent during send-up examinations will be fined Rs. 200/- per subject.
4. The students who remain absent in co-curricular activities at the turn of their class will be fined Rs. 200/- per function.
5. The students may get duplicate I.D. card, Character Certificate and Bus Card after payment of fine@ Rs. 270/- each.
6. The students without I.D. card or without proper uniform, will be fined Rs. 200/-
7. Students are expected to be regular, punctual and if a student remains absent from the College for three days in a month, her name will be struck off from the college rolls. If her absence is for genuine reason, the Principal may consider her application for re-admission.

Important Note:-

The name of a student will also be struck off the College rolls due to absence, non-payment of dues or rude behavior. She may be allowed re-admission by the Principal. The fee for re-admission will be the Admission Fee prescribed in the Prospectus. However, re-admission can be granted only once. 2nd time Re-admission, in specific cases, may be granted on payment of full tuition and admission fee.

Conduct and Behavior

The students of Lahore College for Women University, Lahore are expected to display a very high standard of personal behavior and conduct. The Vice-Chancellor is authorized to take suitable action against unbecoming behavior. All authority regarding maintenance of proper discipline is vested with the Vice-Chancellor, Staff Advisory Council and Proctorial Board. The decision of the Vice-Chancellor in all disciplinary matters will be final and binding on the students and their parents/guardians. She has the authority to suspend, expel or rusticate a student (Day Scholar or Boarder) in the greater interest of the College discipline. However, the defaulter will be given the right to clear her position before the Advisory Council / Proctorial Board.

College Uniform Dress Code

According to the College rules, every intermediate student has to be in the college uniform. The prescribed uniform is: -

Summer

White cotton Shirt, Shalwar, White Dupatta and Black Shoes

Winter

White cotton Shirt, Shalwar, White Dupatta, Black Shoes, Black Sweater and Black Shawl. Wearing the student's I.D. Card is a compulsory component of dress code. Students without I.D. Card will not be allowed to enter the college.

All the students are expected to observe simplicity. They are not allowed loud make-up or ostentatious jewelry. They are not allowed to wear jeans, tights and T-Shirts as well. Students violating the dress code will be fined Rs. 200/- per day.

Co-Curricular and Sports Activities

In order to facilitate co-curricular activities and sports there are over 50 students', societies and clubs. Presidents and Secretaries of these societies are nominated by the teachers. By participating in these activities, the students win prizes and thus uphold and strengthen the glorious tradition of the College. Our Intermediate players also represent Pakistan at National and Asian level. Separate period is allocated for sports in the time table. Throughout the session LCWU has participated in the following tournaments.

- Inter-Collegiate (Intermediate)
- LCWU students participated in 13 games i.e. Netball, Basketball, Hockey, Cricket, Volleyball, Handball, Badminton, Athletics, Gymnastic, Table Tennis, Cycling and Tennis.

Sr. No.	Game Name	Position
1.	Cycling	Winner
2.	Tennis	Winners
3.	Gymnastic	Winners
4.	Hockey	Winners
5.	Basketball	Winners
6.	Netball	Winners
7.	Table Tennis	Winners
8.	Volleyball	Winners
9.	Handball	Winners
10.	Football	Winners
11.	Badminton	Runner Up
12.	Athletics	Winners
13.	Cricket	Winners

- Lahore College for Women University has been winning the General Trophy at Intercollegiate level for the last 33 years.
- Lahore College for Women University won overall Winner Trophy in Punjab Olympics 2018.
- Three Intercollegiate players Ms. Sahar Zaman, Hajma Bibi and Fatima were selected for Pakistan Football team.
- Our student Ms. Amtul Rehman was declared best athlete in Pakistan Boards. College got General Trophy in 2018-19 at Intercollegiate Level.
- -Lahore College for Women University won the General Trophy in 2018-19 at intercollegiate level.

- Lahore College for Women University won overall trophy with 1500 points in 2018-19 Punjab Olympic Games.
- Lahore College for Women University won Intercollegiate Basketball Girls Championship 2018-19
- Lahore College for Women University won Intercollegiate Hockey Girls Championship 2018-19
- Moreover, Lahore College for Women University team was runners up of Intercollegiate Badminton Championship, Winner of Gymnastic, Basketball, Handball and Football.

COLLEGE LIBRARY

1. **Ms. Saira Abdul Hameed**, Junior Library Assistant

The Central Library

The main library of the College stocks many valuable books. There are numerous up-to-date magazines and publications as well as national newspapers which are received regularly in the library. In order to borrow books students are issued a library card. They can borrow these books for 14 days. Books are issued to different classes turn wise on different days of the week. However, reference books, magazines and newspapers cannot be issued or taken out of the library. The students will be fined if they keep books for more than the fixed days. Roll Numbers for final exams will be issued only if the students bring a clearance slip from the librarian.

Resources of Central Library

Category	No. of Items		Quantity
Books	In year of 2016, 2400		85000
	entered in Accession		Total number of books
	Register		84687
Journals and Magazines	Local	Subscribed	4
Newspapers	Local	Urdu	6
		English	4
Online Resources	HEC Digital Library		---

Science Section

The College library has 27, 700 books on Science, Engineering and Technology. Many up-to-date magazines and publications as well as national newspapers are received regularly in the library.

3. Students should not enter the Administrative Offices or Staff Rooms without permission.
4. Students must be punctual in:
 - a) Attending lectures
 - b) Paying the College and hostel dues
 - c) Returning library books.
5. Students are not allowed to leave the College premises during academic hours.
6. Students are not allowed to see their visitors or bring them in the College during academic hours.
7. Students are not allowed to walk or chatter near the Vice Chancellor's / Principal's Office.
8. Students are not allowed to celebrate birthday parties during academic hours.
9. Students should read the notice board daily.
10. Students should attend College in proper uniform.
11. Students are not allowed to wear jewelry (real or artificial).
12. Students are not allowed to willfully damage the College property.
13. Students are expected to attend the co-curricular activities. They are not allowed to use video cameras during these functions.
14. Students are not allowed to bring cameras, tape recorders, mobile phone etc. during academic hours. Defaulters will be punished per college policy.
15. Any student who violates the College rules or involves herself in negative activities like strikes, protests or instigates other students for this purpose, or blows crackers will render herself liable for disciplinary action.
16. Every staff member has full right to check students for not observing the above-mentioned rules and any report by the staff members will bring punishment to the defaulters.
17. On the College premises the Principal's authority is absolute. She has the power to impose fine or some other suitable punishment for a breach of College discipline, rudeness to staff, irregularity and disorderly behavior. A serious violation of these rules will render her liable to be rusticated from the College on the recommendation of the Staff Council. These rules are meant to cultivate refined behavior in the students and to maintain a proper, disciplined environment in the College.
18. Students are forbidden to spread by word of mouth or written material, religious sectarian, ethnic, regional or linguistic conflict or hatred.

Medical Facility

Lahore College Health Care Centre is a spacious, well equipped four bed basic health unit working efficiently 24 hours for the physical wellbeing of its students. Lahore College Health Care Centre provides medical facilities to 70-120 students daily.

The Staff at Health center comprise the following:

Morning Total 5, one Medical Officer, one female Nurse, one female Attendant / Dispenser, one Attendant female and one male.

Administrative Staff (Medical Facility)

1. **Dr. Hafsa-Tul-Uzma**, Medical Officer (Morning Shift)
2. **Dr. Tabinda Maqsood**, Resident Doctor (Night Shift)
3. **Ms. Shaheen Kalvin**, (Female Nurse)

Following medical services are provided:

1. Medical Consultation
2. Dispensing of oral and few injectable medicines
3. First Aid Services
4. Anti-tetanus vaccination for hostel residents
5. Nebulization
6. Weight and blood sugar level assessment
7. Provision of full medical coverage to the Day Care Centre and students of the Primary Laboratory School at LCWU.

*A fully equipped ambulance with driver is available 24 hours

Transport Facilities

Students are directed to contact the Transport Officer to get their bus cards issued soon after their admission and payment of dues. A Bus Card is issued for two months and renewed after every two months. The cards of defaulters will be cancelled and reissued on the payment of a fine of Rs. 100/- Bus charges are not refundable. Students are expected to display appropriate behavior while using the transport facility.

Student Financial Aid Office

The Student Financial Aid Office is supervised by the Director, University Advancement and Financial Aid.

Mission

Provide financial assistance to deserving students in order to facilitate them to achieve their educational goals. Financial assistance is a joint venture between students and the financial aid office which works on the objective that financial constraints should not be a barrier to quality education.

Administrative Staff

1. **Mr. Abdul Ghaffar Ali**, Director (University Advancement and Financial Aid)
2. **Ms. Hina Anwar**, Deputy Director Financial Aid
3. **Ms. Tanzeela Raheel**, Assistant
4. **Ms. Samreen Sadaf**, Assistant
5. **Ms. Amber Azhar**, Assistant Accounts Officer
6. **Ms. Zainab Khan**, Assistant Accounts Officer
7. **Mr. Omar Jamil Khan**, Assistant
8. **Mr. Muhammad Salman**, Senior Clerk

Details of Scholarships for Intermediate Students

1. LCWU SCHOLARSHIPS (F.A/F.Sc.) – Part-I

- Students whose father/guardian's income is equal or less than Rs. 40,000/- are eligible for applying for LCWU Scholarships.
- Student having less than 70 % marks (if Annual System) is not eligible to apply
- Scholarship forms are also available on the website of LCWU i.e. www.lcwu.edu.pk

2. Punjab Education Endowment Fund (PEEF) SCHOLARSHIP (INTERMEDIATE)

- Applicants should be freshly enrolled students of LCWU for the current year. Students must have secured at least 60% marks in Examination held in 2021 (Annual) from B.I.S.E, Lahore.
- Students should have passed the above-mentioned examination as a regular student.
- Only students whose monthly family income is equal or less than Rs 15,000/- can apply.
- Students having Punjab domicile can apply.
- Students must not have received any other scholarship.

3. PEEF SCHOLARSHIP (SPECIAL CATEGORY)

- Students must have secured at least 60% marks in the result Examination held in 2021 (Annual) from Punjab.
- Must have passed the above-mentioned examination as a regular student.
- Only students whose monthly family income is equal to or less than Rs. 15,000/- can apply.
- Students having Punjab domicile can apply.
- Following are the four categories.
- Father (Deceased)
- 1-4 Grade Officials
- Minorities
- Orphan
- Students can either apply through the LCWU Student Financial Aid Office or they can apply directly on PEEF website: www.peef.org.pk

4. LAHORE BOARD SCHOLARSHIP F.A. / F.Sc. Part-I and Part-II

- It's a merit-based scholarship program for F.Sc. /F.A./ I.C.S/Commerce Students.
- Students whose marks are more than 900 can apply.
- Students can apply through LCWU Student Financial Aid Office.

5. PAKISTAN BAIT-UL-MAL SCHOLARSHIP

- It's a need-based scholarship program for Intermediate students.
- Students must have overall grade "B" or at least 60% marks in previous degree.
- Self-finance / Self-sufficient students and dependent of Govt. employees are not eligible for this scholarship.

Book Bank

There is a book bank maintained by the Principal's office for the deserving students.

Identity Card

Identity cards are issued to all the students on the commencement of regular classes. They are required to carry their cards with them at all times. If a student fails to produce her card on demand by the teaching staff, she will be fined Rs. 100/- Refusal to show the card can even entail a heavy fine. In case of loss of card, a duplicate will be issued on payment of Rs. 270/-.

College Discipline Committee

College Discipline Committee along with the Principal and Vice-Principal consists of the following members:

- Dr. Huma Tauseef Associate Prof. Computer Science
- Dr. Naila Amjad Assistant Prof. Statistics
- Dr. Ammara Khan Head of English Department

College Advisory Council

College Council along with the Principal and Vice-Principal consists of the following members:

- Prof. Dr. Safia Anjum Professor of Physics Department
- Dr. Amina Muazzam Butt Assistant Professor Psychology Department
- Dr. Saima Batool Assistant Prof. Punjabi

The decision of the Advisory Council pertaining to any matter about the College will be final.

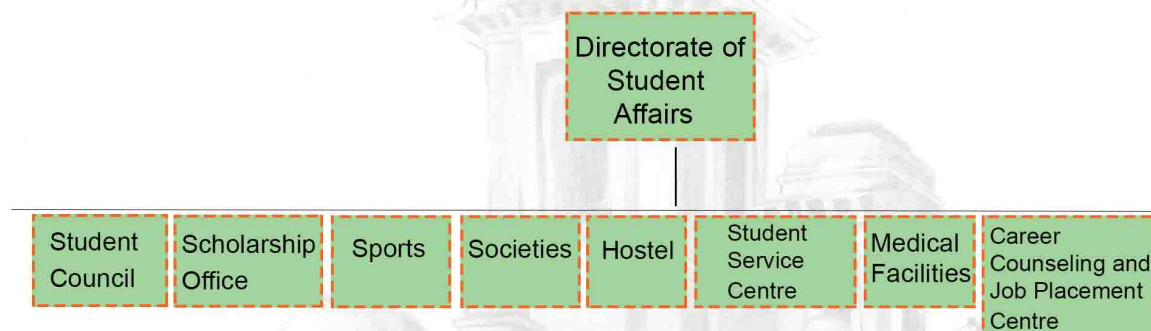
Proctorial Board

To maintain discipline and order in the College, there is a Proctorial Board comprising the Principal, Director Students Affairs and members from the Student Council keep vigilance on the campus. Cases of violation of the following general rules of the College should be reported to the Director Students Affairs who will immediately take proper action.

1. Students are expected to observe strict order and discipline in the College, the hostel and the playgrounds.
2. Students should not move about or talk in the verandahs and corridors so as to avoid disturbing class-work.

DIRECTORATE OF STUDENT AFFAIRS

The Directorate of Student Affairs establishes a link between the University administration and the students. It facilitates students in addressing their problems related to academics, co-curricular activities, sports, libraries, examinations, transportation, health, fee, career, planning and discipline etc. The goal of the Student Affairs office is to ensure the welfare and growth of students with respect to every aspect of their university life and to ensure provision of maximum support in the following areas:



The primary purpose of the Directorate is to facilitate students in every possible way under one umbrella and to help them develop balanced personalities; to instill moral values, integrity, civic sense and tolerance leading to a broader vision of life.

The Student Affairs office plays an active role in encouraging students to report their problems regarding university affairs and in striving to resolve these problems through the concerned departments. The students can visit the office in person or send a written complaint through e-mail or ordinary mail.

RUTH PFAU WOMEN INSTITUTE FOR LEADERSHIP AND LEARNING

Student Service Centre Administration:

- **Ms. Mamoon Riaz**, MS (Health Psychology) (LCWU), M.Sc. (Applied Psychology) (PU), Material Developer/Psychologist
- **Ms. Samina Uzair**, MS (Clinical Psychology) (PU), B.Sc. (Hons.) (Applied Psychology) (KC), Student Counselor / Clinical Psychologist
- **Ms. Tabinda Jalil**, MS (Health Psychology), M.Sc. (Applied Psychology) (LCWU), Student Counselor/Psychologist
- **Ms. Nomita Sunil**, Gymnasium Instructor

Student Service Centre, located in Women Institute for Leadership and Learning provides a number of student friendly services.

The Student Service Centre of LCWU was established in 2003 with a holistic approach to enhance the Physical, Psychological, and social well-being of the students. The Centre has the following components:

1. Career Guidance and Counseling Centre
2. Student Gymnasium
3. Seminar Hall

1. Career Guidance and Counselling Centre

The Counselling Centre of Students Service Centre provides career guidance as well as psychological counselling along with personal growth and development services. Clinical and counseling psychologists are available to assist the staff and students in understanding and resolving their psychological problems. The Centre is also offering psychological assessment services including aptitude, intelligence and personality assessment.

Personal Counseling

The personal counselling and guidance services are available for students and faculty. The following issues can be discussed for personal growth and skill enhancement:

- Familial issues and relationship problems
- Lack of assertiveness
- Conflict with peers and friends
- Lack of confidence
- Adjustment problem with roommates in hostels
- Problems in English language
- Career selection
- Concentration problem
- Stress management
- Anger management
- Time management

Career / Vocational Guidance

- Different psychological tests are used for gaining insight into one's interests, abilities and skills.
- Students are informed about educational programs, professional career plans, and employment and job opportunities.
- Students are guided about ways of accessing information about work opportunities in various career fields.
- Students are helped in career planning and in conflict resolution with reference to the choice of professional programs or career paths.

Health Education Services

Student Service Centre (SSC) regularly organizes health education activities in collaboration with various organizations including Fatima Memorial Hospital, Shaukat Khanam Cancer Hospital and Pink Ribbon Pakistan, and other similar organizations.

Harassment Complaint Cell (HCC)

Lahore College for Women University has established Harassment Complaint Cell in accordance with the guidelines of HEC and also keeping in view the Women Empowerment Package 2012. LCWU is a place where administrators, faculty, employee/staff and students (all levels/categories) work and learn in an environment, free from intimidating, offensive and hostile behaviors. The information and awareness lectures about Harassment Complaint Cell are a regular activity of the HCC.

The students of different faculties of university are guided about the nature of harassment, the process of launching complaint, inquiry process and possible punishment. The information regarding HCC is also displayed on different university notice boards.

Student Gymnasium

The gymnasium is equipped with up-to-date workout facilities and can cater for the needs of 50-60 students at a time. Regular aerobics classes are run by a trained aerobics instructor. The gymnasium instructor is available throughout the week to assist the students and faculty. The facility is open in the evenings as well. For admission and further information, the gym instructor may be contacted on telephone extension No. 258.

Centre for Career Counseling and Job Placement Overview of the Department

The Centre for Career Counseling and Job Placement (CCJP) has started operation in October 2011. Since then, the Centre is providing counseling to students to select suitable careers. CCJP is assisting students in job placements and skill development. Furthermore, the Centre is preparing students for career success and their role as future leaders by:

- Helping students start their career planning and preparation at an early stage through career and student development programs.
- Soliciting more internship opportunities and further expand the employment network for graduates.
- Effectively improving students in behavior and skills necessary to seek and qualify for job.
- Inviting government officers, judges, women entrepreneurs and members of Federal, Provincial and Public Services for interaction with students.
- Conducting workshop and seminars to encourage students toward public and private employment.
- Training session for skill enhancement and capacity building of the students
- Guiding students choose further higher education in Pakistan or abroad in their study area with the help of Higher Education Commission (HEC).
- Acting as medium of communication amongst students, industries and professional bodies to promote career opportunities for students.

Community Service (Independent Living Centre)

The LCWU Disabled Students Support Committee has established an Independent Living Centre in 2012 under the supervision of Prof. Shireen Asad (Rtd.), Ms. Parveen Riaz (Rtd.) and Dr. Atiq-ur-Rehman for the physically and visually challenged students. Its main objectives are to facilitate physically and visually challenged students.

Administrative Staff:

- **Dr. Alia Farooq**, Ph.D., M.S. (LCWU), M.A. (PU), Associate Prof.
 - **Ms. Sadia Iqbal**, (Admin Assistant)
 - **Ms. Shireen Tabasum**, (Attendant)
1. Perkins Braille
 2. Computers
 3. Scanner and Printer
 4. Inter Brail Books
 5. Recorded Books
 6. Provision of Writer
 7. Pick and Drop Service
 8. Students have an independent room for sitting and separate washroom

Residential Facility

The College offers the facility of hostels to the students coming from other cities and abroad. There are four hostels for Intermediate, Graduate, Post-Graduate and Ph.D. students. Due to limited accommodation facilities, the students are offered seats on merit only.

Hostel Administrative Staff

- **Dr. Farzana**, Chief Warden
- **Ms. Rubina Akhter**, Warden (Habiba Hall)
- **Ms. Asmat Tahir**, Warden (Jaffery Hall)
- **Ms. Nadia Rauf**, Warden (New Hall)
- **Ms. Maria Iqbal**, Assistant Warden (Jaffery Hall)
- **Ms. Rabia Faiz**, Assistant Warden (New Hall)
- **Ms. Syeda Munira Yaqboob**, Assistant Warden (Habiba Hall)
- **Dr. Safoora Riaz**, Manager (Manager)

Hostel Rules

1. Introduction:

The Lahore College for Women University offers hostel facility to the students coming from other cities and abroad excluding the local students. There are separate hostels in Lahore College for Women University, Lahore, for Intermediate, Graduate and Postgraduate Students.

2. Allotment:

1. Students are required to apply for hostel accommodation on prescribed hostel form.
2. Hostel accommodation will be allotted by Chief Warden. Due to limited accommodation facilities, the hostel seats will be provided to the students only on merit and all other applications will be put on waiting list.
3. The seats of quota are reserved as per Government Policy.
4. Hostel admission is offered for one academic year only, extension for another year is based upon good conduct and academic performance.
5. The hostel accommodation facility is not available for MS/MPhil, MA/MSc (Evening) and diploma / certificate programme.
6. Residents who have been expelled from the hostel will not be eligible for re-admission.
7. Additional rules and regulations issued from time to time must be fully observed as well.

3. Hostel Charges (Subject to change from time to time)

1. Hostel Supervisory Committee is authorized to give hostel fee concessions/waivers to deserving students.
2. Hostel Supervisory Committee is authorized to increase/change/amend hostel charges due to cost of living/revision of pay scales or other administrative compulsions.
3. Hostel Supervisory Committee is authorized to waive off Hostel charges in case of unusual circumstances for which students are not responsible
4. Hostel Charges will be increased by 5 % every year.
5. The hostel Charges (Utility Bills, Janitorial Services, and Maintenance) shall be received, quarterly.
6. Mess Charges and Generator Charges shall be received, monthly.
7. Room cooler charges at the rate of Rs.800/-per month will be charged in April at the beginning of summer season, for a period of 6 months.
8. Boarders will have to submit their quarterly charges till 15th of the first month of each quarter. They will pay a fine of Rs. 50/- per day for payment after due date. If a boarder fails to deposit the monthly charges till 5th of the next month, she may be denied hostel facility.
9. Mess facility will be suspended due to non-payment of mess charges, with a warning issued by Hostel Warden.
10. Membership of the hostel mess is compulsory for every resident.
11. No concession is offered to students in the hostel annual dues.
12. In case of seven days consecutive leave from the hostel with application, boarders can have the concession of one-week deduction in their mess dues.
13. All dues deposited by boarders including the security shall be forfeited if she is expelled on disciplinary grounds.
14. Hostel charges shall be determined and fixed as deemed necessary by the University from time to time.

Hostel Charges

Sr. No.	Particulars of Fees	Amount in Rs.
One Time Charges at the Time of Admissions		
1	Security (Refundable)	3000
2	Breakage (on Admission)	600
Sub Total		3600
3	Room Rent (Annual Charges)	
	Cubical	4500
	Biseater	4000
	Triseater	3500
	Dormitory	
Monthly Charges		
4	Utility Bills	1911
5	Janitorial Services	630
6	Maintenance	2289
7	Mess Charges	5082
8	Generator Charges (Backup Supply)	630
Sub Total		10542
Seasonal (if room cooler is used)		
9	Room Cooler (April to September)	800

Note: Students are responsible for purchase and maintenance of their own Room Coolers.

A. Hostel Security/Refund

1. Hostel security must be deposited at the time of admission in the hostel.
2. If boarder leaves the hostel during a semester, hostel dues of that semester are not refundable.
3. Refund of hostel security to boarder who is willing to leave before completion of their last semester, will be made after prescribed process.
4. In case of expulsion from the hostel due to indiscipline or misconduct, security deposits will be forfeited in full.

4. ATTENDANCE:

B. Presence/Arrival

To ensure the security as well as presence/arrival of boarders in the hostel, they are required to mark attendance while entering or leaving the hostel. The Warden will monitor the attendance.

A. In/Out Timings

1. Students should strictly observe the in/out timings notified by the warden during summer and winter.
2. In/out registers must be filled in while leaving the hostel for a private purpose, failing which absence will be marked and action will be initiated against the defaulters.
3. Attendance must be observed at the time of breakfast/lunch/dinner.
4. Every boarder must strictly follow the hostel closing hours; i.e. 7:00 pm in summer (15th April) and 5:00 p.m. (15th October) in winter, anyone falling short of the discipline in this regard will be strictly checked.
5. If any boarder has to attend any function/party/trip of the University after the hostel closing time then she will take the written permission of the Chief Warden after verification from concerned Chairperson of the Department.

5. VISITORS POLICY

1. At the time of admission to the hostel, every boarder's parents/ guardian must provide a list of maximum five visitors on prescribed form giving details regarding name, designation, relationship and their ID card numbers etc. This list must be signed by the parents/ guardian.
2. Appointment of a local guardian by the parents/ guardian is appreciated who will be contacted in case of any emergency.
3. Visitors of the boarders are not allowed to visit their room or to stay with them.
4. The visitors/guardians are allowed to meet the boarders only during the specified timings/schedule given by the hostel administration from time to time.
5. The security guard of the hostel will ensure verification of the visitor and will properly record their particulars in the security register after receiving original ID cards from the visitors which will remain in his custody until the visitor leaves.
6. In case of any emergency, one of the family members, mentioned in the hostel visiting list of the student, has to come to take the student home.

6. GATE PASSES

1. Gate passes are issued to all the boarders by the respective Warden/Assistant Wardens, on Friday and Saturday, to go home on weekends.
2. Self-pass will be issued to the boarders by the Warden / Assistant Wardens after written permission of the parents/guardian. Self-pass will be issued to:
 - a. The Graduates and Postgraduates boarders for their Research work, Project, Field Work and Internship on the recommendation of the research supervisor and Chairperson of the Department.
 - b. The boarders for shopping only once a week on Saturday.
3. Self-pass is not allowed to the Intermediate boarders.
4. Hostel gates will be closed as per notified timings.
5. Violators of the above rules would be liable to strict disciplinary action by the Hostel/ University Authorities, which may lead to expulsion from the Hostel/University.

7. DURATION OF STUDENTS STAY IN HOSTEL

1. All the students who are granted admission in the hostel, their stay in the hostel will be for the duration of their on-campus studies as mentioned in Academic Regulations.
2. Hostel facility will be provided to the Ph.D. students initially for a period of 3 years which can be extended up to 5 years on the recommendations of the Departmental Doctoral Committee.
3. Every student should stay in the accommodation allotted to her by the concerned authority. She will not be allowed to change accommodation once allotted unless approved by the Chief Warden.
4. If there are surplus or vacant seats available, students of MS and PhD applying for shorter duration can be accommodated and permission shall be granted by Chief Warden, on case-to-case basis, with charges.
5. If the outgoing classes (Intermediate Part II, BS 8th Semester, MS/MPhil 4th Semester & Ph.D.) vacate the hostel after completing their academic session and come again for practical, viva or thesis work. They will be charged Rs: 200/- per day (excluding mess and other charges) and if they stay for more than 14 days dues will be charged according to existed rates.

8. PUNISHMENT

1. In case of any hostel rule violation, hostel warden will give written warning to the boarder however, in case of serious violation of rules, the parents will be informed in writing.
2. Any student who will violate the hostel rules and is found involved in any negative activity like strike or instigating other boarders for this purpose, will be liable to disciplinary punishment.
3. The case will be forwarded to the Hostel Student Affair Committee on recommendations of Chief Warden for further appropriate action. The student may be expelled from the hostel after three warnings and will not be allowed for re-admission.
4. If a boarder extends her leave/stay at home, the parents will immediately inform the concerned hostel warden for such extension.
5. If a boarder extends her leave/stay without informing the hostel authorities, the concerned hostel warden will intimate the parents immediately, if no information/response is received from the parents or boarder the case may be referred to Hostel Student Affair Committee and the Committee will give decision as per nature of case.
6. In case the boarder is struck off from the hostel and later on is allowed for re-admission, re-admission charges amounting to Rs. 5000/- will be charged.

9. INSPECTIONS

1. The University or Hostel Administration can inspect anytime, the hostel premises, boarders' rooms, almirah's, bags etc. without any advance notice.

10. HOSTEL ENVIRONMENT

1. Every boarder is expected to maintain peace, tranquility, calm atmosphere and discipline in hostel and respect the rights of others.
2. Boarders are not allowed to take their breakfast, lunch and dinner in their rooms.
3. Boarders will take care of cleanliness of the hostel.
4. No one is allowed to misbehave with the administration and employees of the hostel in any situation. Violation may cause expulsion from the hostel.
5. Boarders must not disturb or cause inconvenience to other boarders and should ensure peace.

6. Smoking, drinking, use of liquor/drugs and keeping of weapons (licensed and unlicensed) is strictly prohibited in the hostel and entails expulsion.
7. Boarders should not keep costly items and excessive cash with them. Hostel administration will not be responsible for any loss.
8. No political and religiously extremist activity or propagation is allowed in the hostel.

11. HOSTEL PROPERTY

1. Boarders are not allowed to damage the hostel property. Any student found guilty will be liable to pay the damage in addition to fine.
2. Hostel administration can impose a penalty, in case she fails to keep her room clean and tidy. Moreover, if there is any complaint against room servant, it is the responsibility of a boarder to inform the hostel administration.

12. CLEARANCE CERTIFICATE:

Certificate of clearance duly signed by the boarder and their father/mother/guardian is required to be submitted to the concerned Hostel Warden at the time of leaving the hostel.

13. HOSTEL FUND MANAGEMENT

1. Hostel funds will be generated from Hostel admission fee collected from boarders. Hostel expenditures will be met from the budget of each hostel.
2. Petty cash for hostel will be maintained as per Financial Rules of hostels, to meet the routine hostel expenses.
3. Audit will be conducted as per prescribed procedure mentioned in Financial Rules of hostel.

14. UTILIZATION OF HOSTEL FUNDS

1. Concerned warden of respective hostel will be included in the Hostel's Supervisory Committee.
Procurement process, of all hostel related items, shall be carried out by Hostel's Supervisory Committee
The concerned Hostel Warden shall initiate the process of payment on account of hostel expenditures. The Hostel Warden shall ensure the completion of requisite codal / legal formalities of the bills / claims before forwarding to the Hostel's Supervisory Committee for approval.
2. Administrative and Financial approval limit for Hostel's Supervisory Committee will be Rs.100,000/- only. Over and above Rs.100,001/- will be approved by the Vice Chancellor.
3. The cheque's of hostel accounts will be signed by the cheque's signatories of the University accounts.
4. Hostel accounts shall be maintained in the prescribed manner by the office of concerned Hostel Warden.
5. Hostel receipts are not part of University funds, therefore, there is no need of pre-audit by the Resident Auditor. However, mandatory annual audit shall be conducted by the University Resident Auditor with the approval of the Vice Chancellor.
6. The maintenance and repair of hostels shall be carried out by Engineering Cell of the University as per procedure applicable for University M & R.
7. The Warden of the concerned hostel will reconcile the account with bank(s) and submit a monthly report of receipt and expenditure to the Hostel Supervisory Committee for its signatures, by the 19th of following month.

8. On the recommendations of Hostel Supervisory Committee, the Investment Committee of the University shall invest surplus balance of the hostel funds.
9. On account of investment of the funds of hostels, record of contribution of each hostel investment, shall also be maintained.
10. The payment of bills and transfer of funds from one hostel account to another hostel account shall not be made. However, in special circumstances, on the recommendations of Hostel Supervisory Committee, Vice Chancellor will allow such payments/transfers from one hostel account to another hostel account.
11. All hostel dues shall be deposited directly in the designated schedule Bank through bank challans, no payment will be received in cash.
12. Grant of honorarium and increase in salary of the hostel administration/ staff shall be fixed by the University Authorities on the recommendations of Hostel Supervisory Committee.
13. The canons of financial propriety shall be observed while incurring expenditure of hostel funds. The purchase / procurement of goods and services must be need based. Mere availability of budget should not be the basis of incurring expenditure.
14. All vouchers in support of items of expenditures shall be retained for a period of five years. Vouchers more than five years old may, at the discretion of Hostel Supervisory Committee and Treasurer, be destroyed except the record relating to pending Enquiries, Court cases of Audit Paras till their final settlement.
15. Subject to amendment in the relevant clause(s), all provisions of already approved SOPs shall remain in force.

NOTE: In addition, rules and regulations issued from time to time will also be applicable.

Other Dues

1. The College fees, hostel fee, funds and other dues must be paid on the dates notified by the College in the National Bank of Pakistan, Jail Road Branch and Bank of Punjab, Shadman Market Branch. However, challan form will be issued by the College office only. In case the students fail to pay their dues within the due date, their seats will be cancelled.
 - (a) To facilitate the students, booth of NBP and BOP are established in the College premises where only students can deposit the dues / fees.
 - (b) If parents wish to deposit the dues, they may contact National Bank, Jail Road, branch after getting the challan form from the College office.
 - (c) Male members are not allowed to deposit the dues at the College booth.
 - (d) The total fee of one year will be paid in every academic year and the names of the students failing to pay the dues on dates notified will be struck off from the college rolls.
 - (e) After payment of dues at the time of new admission, the students must contact the staff on duty for the issuance of Roll No. and section otherwise her admission will be considered cancelled.
2. After payment of dues at the time of new admission, if a student pays her dues and leaves the College for whatsoever reason, she will get back the library security only (Rs. 935/- Nine Hundred and Thirty five only) as per rules of the college.

Transcript Fee

Present students or ex-students desirous to take admission in any Foreign Educational Institution are required to pay Rs. 500/- per copy and then get the Transcript prepared by the Principal's Office.

**F.A. / F.Sc. Fee Structure for the year 2021-2022
(WITHOUT PRACTICAL FEE)**

Sr. No.	Item Amount	Amount	Amount with 5% increase
1.	Admission Fee	2,050	2,155
2.	Tuition Fee	12,520	13,145
3.	I.D. Card	270	285
4.	General Fund	5,950	6,250
5.	Medical Fund	680	715
6.	Magazine Fund	570	600
7.	Board Registration + Exam Fee as prescribed by BISE Lahore	2,490	2,490
8.	Department Development Fund	3,020	3,170
9.	College Examination Fee	2,210	2,320
10.	Transport Fee	450	470
11.	Library Security (Refundable)	890	935
12.	Sports and Fitness Fund	560	585
Total Rs.		31,660	33,120

Note:

1. Total Fee (1st Year) without Practical Rs. 33,120/-
2. Practical fee will be charged Rs. 3000/- per subject, per annum for practical subjects only.
3. Library Security will be refunded within Six months of closing of academic session.

TREASURER
Lahore College for Women
University, Lahore

LAST YEAR'S RESULT

Pre-Engineering Group (Session 2018-2020)

Total	Appeared	Fail	Passed	Grade						Pass %
				A+	A	B	C	D	E	
172	166	00	166	111	40	11	04	---	---	100%

Pre-Medical Group (Session 2018-2020)

Total	Appeared	Fail	Passed	Grade						Pass %
				A+	A	B	C	D	E	
518	498	00	498	390	76	29	02	01	---	100%

ICS Physics Group (Session 2018-2020)

Total	Appeared	Fail	Passed	Grade						Pass %
				A+	A	B	C	D	E	
161	153	01	152	29	41	58	24	--	--	99%

ICS Economics Group (Session 2018-2020)

Total	Appeared	Fail	Passed	Grade						Pass %
				A+	A	B	C	D	E	
166	156	01	155	---	20	74	60	01	---	99%

ICS Statistics Group (Session 2018-2020)

Total	Appeared	Fail	Passed	Grade						Pass %
				A+	A	B	C	D	E	
140	129	00	129	12	60	37	18	02	---	100%

General Science Group (Session 2018-2020)

Total	Appeared	Fail	Passed	Grade						Pass %
				A+	A	B	C	D	E	
73	49	01	48	---	---	16	27	05	---	98%

Commerce Group (Session 2018-2020)

Total	Appeared	Fail	Passed	Grade						Pass %
				A+	A	B	C	D	E	
97	86	01	85	12	36	16	10	11	---	99%

Home Economics Group (Session 2018-2020)

Total	Appeared	Fail	Passed	Grade						Pass %
				A+	A	B	C	D	E	
64	61	---	61	01	28	28	4	--	---	100%

Humanities Group (Session 2018-2020)

Total	Appeared	Fail	Passed	Grade						Pass %
				A+	A	B	C	D	E	
628	585	10	575	07	370	90	70	36	02	98%

LAST YEAR'S MERIT

F.Sc.		ICS			I.Com	Arts	H.Eco.
P. Med.	P. Eng.	Physics	Economics	Statistics			
1014	992	950	812	891	870	634	724