



LAHORE COLLEGE FOR WOMEN UNIVERSITY, LAHORE

Jail Road, Lahore-54000, Pakistan. Tel: 042-9203091, 9203801-9 Fax: 9203077

Ref. No.LCWU/_____

Date: 12-10-2021

Water Section:

Clean water and Sanitation Status in Lahore College for Women university

Clean water is vital for life because millions of people including children die every year from diseases associated with inadequate water supply, sanitation, and hygiene. Therefore, Lahore College for Women University ensure the easy and safe access of students and staff to water and sanitation.

1.1.Nature of water usage in university

Following are the key consumption point for water in university.

1. Kitchens
2. Toilets
3. Laboratories
4. Green belts
5. Drinking water coolers and water filtration plant

1.2.Water supply in university

University is not dependent on government water supply. To fulfil the demand of water , university has installed a tube well in main ground of the university where ground water is extracted from 700ft depth on daily basis. This ground water is further distributed to four water tanks which are constructed in different blocks of university. These water tanks have the capacity to carry large volume (Gallon) of water e.g., 50,000g, 12000 g, 6000g, 4000g. Ground water extraction volume vary from 322000 gallon per day in peak months (August to May) to 72000 gallon per day in off months (June to July).

Table : Water availability per person per day in campus

Supply of water	Gallon per day	Cubic meter (m ³)	m ³ /day/person
August to May (10 months)	$(50000 \times 6) + 12000 + 6000 + 4000 = 322000$	1218.9	$\frac{1218.9}{15000} = 0.081$
June to July (02 months)	$50000 + 12000 + 6000 + 4000 = 72000$	272.54	$\frac{272.54}{15000} = 0.018$
Average water supply per day	$\frac{(322000 \times 30 \times 10) + (72000 \times 30 \times 2)}{365} = 276493.2$	1046.64	$\frac{1046.6}{15000} = 0.0697$

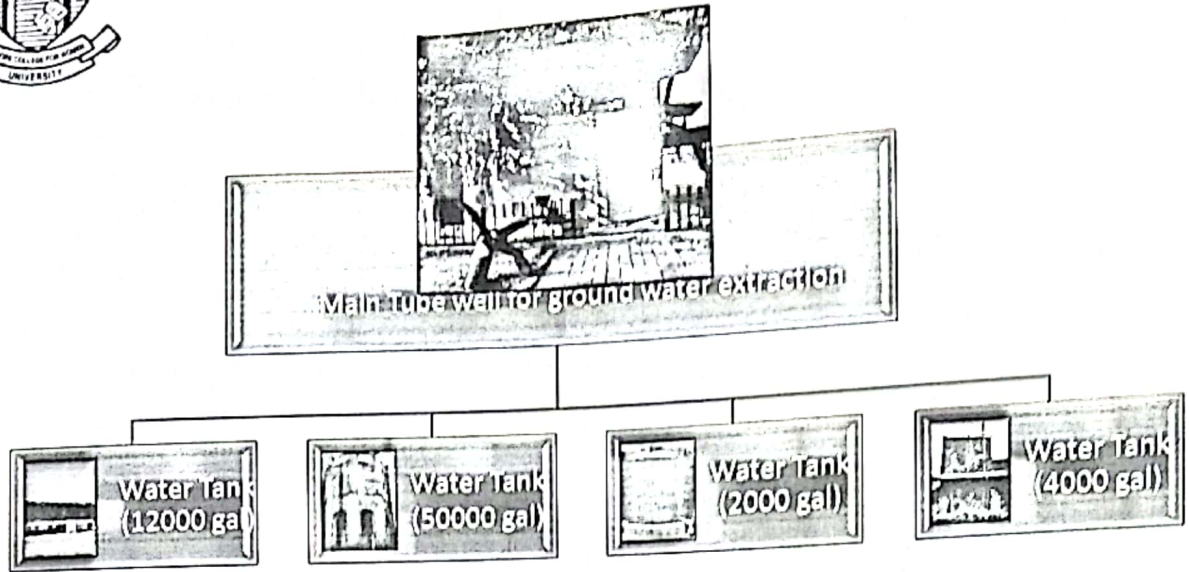


Fig:1. Tube Well and water tanks installed in university for the supply of water

1.3.Provision of clean safe and free drinking water

Lahore College for Women University is highly concerned about the health of its students and staff. University administration has formulated an Environmental Committee in 2012 which comprised of professionals from academic and non-academic departments of university. This committee assures the supply of safe drinking water and also monitor the quality of drinking water on regular basis. 44 water coolers (Fig.2) with 03-filters have been installed in the premises of campus at different locations for easy access of every person to clean safe and free drinking water. University Administration has also installed a water filter plant (Fig:3) with 500L capacity to cope with the demand. Water quality of all drinking water sources in campus is monitored on regular basis.



Fig:2. Drinking water cooler

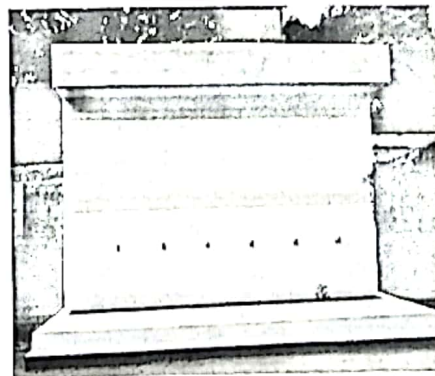


Fig:3. Water filtration plant



LAHORE COLLEGE FOR WOMEN UNIVERSITY, LAHORE

Jail Road, Lahore-54000, Pakistan. Tel: 042-9203091, 9203801-9 Fax: 9203077

Wastewater Reuse

To minimize the burden on natural water resource of campus, wastewater releasing from water coolers and air conditioner unit in university is being used to irrigate the plants and nearby green belts in campus.

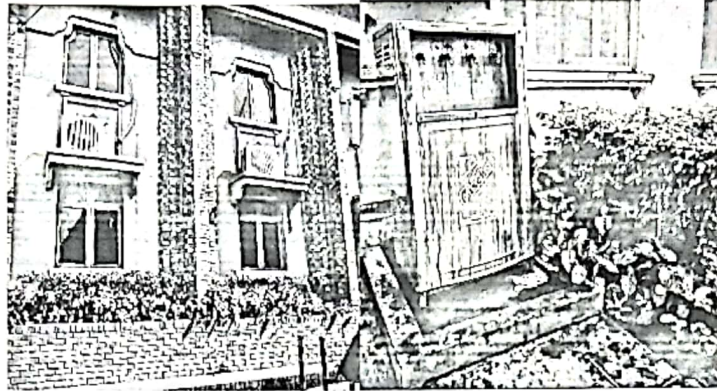


Fig 4. Wastewater reuse

1.5.Wastewater treatment

For the partial sedimentation, wastewater from all sewage lines fall into a large septic tank (Fig:5) (20x25x22 feet) which is constructed in the parking area of university. After partial sedimentation, wastewater from university enters into the main sewage drain in Shadman, Lahore and further moves to main wastewater treatment plant of city that is located at 22km away from university in Gulshan-e-ravi. Lahore

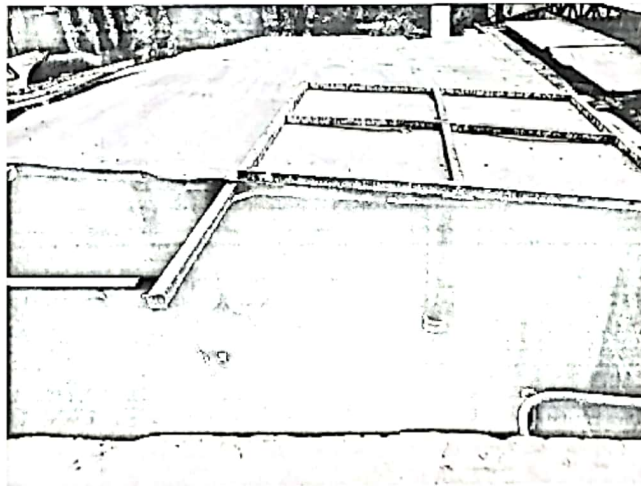


Fig : 5. Septic Tank for sewage water

Verified By Project Director

Lahore College for Women University, Lahore