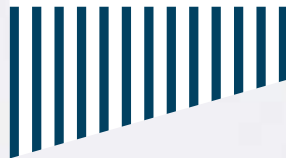


2023

F.A./F.Sc.

INTERMEDIATE

COLLEGE LCWU



100
GLORIOUS YEARS OF



COLLEGE FOR
WOMEN UNIVERSITY
LAHORE
1922 - 2022



INDEX

01	Vice Chancellor's Message	01
02	Principal's Message	02
03	History of LCWU	03
04	Photo Gallery	05
05	Intermediate College Administrative Staff	08
06	Academic Programs (Intermediate 1st and 2nd Shift)	09
07	Post Graduate Programs (B.S,M.Sc., M.S., Ph.D.)	12
08	Academic Departments (Faculty)	13
09	Admission Rules (Application Procedure)	18
10	Reserved Seats	19
11	Migration	19
12	Examination (Internal and External / BISE LHR)	20
13	Medals	20
14	Leave Rules	20
15	Conduct and Behavior	20
16	College Uniform (Dress Code)	21
17	Co-curricular and Sports Activities	21
18	Library and Book Bank	22
19	Identity Cards	22
20	College Advisory Council / Academic Committee	23
21	Medical Facilities	23
22	Transport Facilities	24
23	Scholarships (Financial Assistance for Students)	25
24	Directorate of Faculty Development and Internationalization	26
25	Directorate of Student Affairs	26
26	Student Counseling and Guidance Centre	27
27	Centre for Career Counseling and Job Placement	28
28	Independent Living Centre (Community Service)	28
29	Residential Facility	29
30	Hostel Rules & Fee Structure	29
31	Last Year's Result / Merit	36



Vice Chancellor's Message

Dear Students,

It gives me immense pleasure to welcome you as our first-year class of session 2023-2025 of the Intermediate College of Lahore College for Women University. You are indeed blessed to find an opportunity to get education at one of the finest intermediate colleges of Lahore. Our college is recognized as a state leader in teaching and learning, student relationships and wellbeing.

LCWU Intermediate College holds the pride of being one of the well renowned colleges of women in Pakistan. This College is a premier institution for women education in Lahore and it has successfully completed its journey of 100 glorious years of academic excellence in May, 2022. Lahore College enjoys a very good reputation as a gateway for entrance into different universities and professional institutions, both inside the country and abroad. Our state-of-the-art campus has spacious classrooms, well equipped modern science laboratories, a well-designed Art studio, excellent TV and FM studios, WB TV and its News Studio, Computer labs, well stocked library and a vast playground to meet the growing demands of an ever-increasing student body.

The College offers a wide range of programs including F.Sc. (Pre-Medical, Pre-Engineering), ICS (Physics, Economics, and Statistics), I.COM, General Science, Home Economics, and Humanities. To cater the needs of increasing number of students and due to high merit, the College is also offering Self-supporting programs for Pre-engineering, Pre-medical, ICS, I.Com and Humanities group. With highly educated and dedicated teachers and excellent infrastructure, our college helps students to realize their goals in life. Our academic standards continue to improve by every passing year and the curriculum we offer is carefully designed to engage and inspire, providing students with the necessary skills to flourish in an ever-changing world. To complement this, we provide a wide range of sports and extra-curricular activities to enrich their academic and social lives.

The Intermediate College of LCWU has the privilege of having a healthy, harmonious ambience and rich values which have played pivotal role in shaping the future of innumerable students. Our prime focus is on the character building, personality grooming and career development of the students. Scholarships are being offered to make quality education accessible to highly-meritorious but financially constrained students. The Career Counseling and Job Placement Center (CCJP) guides students regarding their future academic career and also facilitate them in finding better job opportunities. LCWU has also its Online Counseling Center for the welfare of students, faculty and staff.

I believe that students play the role of backbone of every nation. They determine the future of every society. The College admits students from diversified backgrounds and enables them to learn and be tolerant citizens. Our mission is to transform students into rational thinkers, competent workers, law abiding citizens and spiritually enlightened individuals. This is my firm belief that the rich values and traditions embedded here would carry you to greater heights in future.

I welcome all the students and wish you all the best for achieving greater success and scaling new heights in the coming session. I hope that your stay at Lahore College would be rewarding for the State and your future career.

Wishing you all Good Luck!

Prof. Dr. Shagufta Naz
Vice Chancellor



Principal's Message

I am extremely pleased to extend a heartfelt welcome to the incoming first year session 2023-2025 who have succeeded in joining our vibrant community of learning at Lahore College for Women University. Congratulations! LCWU is a premier institution for women education in Lahore with a history of more than 100 years commendable service to its credit. Our inclusive spirit and dedication to the highest standards of all-around education have helped Lahore College for Women University Lahore build an outstanding reputation. Our mission is to provide the best affordable higher education without compromising on quality, credibility, or academic excellence and we want to produce highly skilled, professional, well-groomed, value-driven women leaders who can shoulder responsibilities in the global community.

At LCWU, we take immense pride in our excellent staff, who are dedicated to create a supportive and enriching learning environment. Our faculty members, students, and support personnel are among the best in their fields. They bring a wealth of expertise and share their knowledge passionately, ensuring that every opportunity is utilized to grow. We are a strong advocate of merit, commitment to fairness and equal opportunities. Our highly dedicated and professional educators work tirelessly to prepare our students to tackle the challenges of the 21st century. They strive to instill discipline and a pursuit of knowledge in our students, ensuring their success in academia and beyond.

LCWU has gained a strong reputation as a gateway to prestigious universities and professional institutions, both nationally and internationally. We empower women for nation-building by imparting education and enhancing their professional skills through a balanced combination of academic theory and practical application.

Our state-of-the-art campus provides an ideal setting for learning and growth. Equipped with spacious classrooms, fully equipped labs, a well-stocked library, and a vast playground, we ensure that our facilities meet the evolving needs of our growing student body. Interactive classroom sessions, technology-integrated lessons, adopt intellectual curiosity and nurture innovative abilities among our students.

LCWU believes in the holistic development of our students. To complement our academic offerings, we provide an extensive range of co-curricular activities that encompass various interests and talents. These include vibrant sports clubs, engaging debating societies, inspiring Naat and Qirat societies and dynamic Fine Arts clubs. These opportunities enable our students to explore their interests and talents beyond academics, encourage personal growth and a well-rounded education.

In response to the public demand, we introduced the Self-Supporting Evening Program during the Session 2018. This program expanded the seats for F.Sc. (Pre-Medical and Pre-Engineering), ICS (Physics, Statistics, and Economics), I.COM, and Humanities. It provided an opportunity for students who narrowly missed the merit cutoff for the Morning Program to secure admission and excel in their studies. We are proud to see these students thrive and succeed in their educational pursuits.

On behalf of the administrative staff and the entire teaching faculty, I extend my best wishes to all of you. Your journey at LCWU is bound to be a memorable experience, filled with growth, knowledge, and transformative opportunities. Welcome to Lahore College for Women University, where excellence meets empowerment.

Prof. Dr. Safia Anjum
Principal

History of LCWU

Lahore College for Women University, with a full-time enrollment of about 14,000 students and a teaching faculty of more than 500 members, is one of the most prestigious institutions of Pakistan. It admits students at the Intermediate, Graduate, Master's and Ph.D. levels.

Established in May 1922 as an Intermediate residential college, LCWU originally housed in a building on Hall Road, Lahore, with strength of 60 students (25 boarders) and 13 staff members. By 1950, the college strength had increased to 600 students and shifted to the present building, originally a school, on Jail Road. LCWU, by 1922, affiliated with the University of the Punjab with an Undergraduate Program in 18 subjects. Within the next two years, the institution had Graduate Programs in 14 subjects. Post-graduate classes in English, were initiated in 1940 and Honors classes in five



subjects were introduced in 1949. B.Sc. classes started in 1955 while post-graduate classes in the subjects of Economics and Physics started in 1966. By 1979, Islamic Studies, Political Science and Psychology were, also added to the ever-increasing list of disciplines.

The year 1990, when administrative and financial autonomy was given to the institution, proved to be the turning point in the history of LCWU. On 13 August 1999, became a Degree-Awarding institution. The institution was elevated to the status of a Woman University on 10 September 2002. At the time of autonomy, in 1990, there were Masters Classes in only six disciplines, but now with the University status, LCWU is offering degrees at graduate, postgraduate and doctoral levels. There is a 4-year B.S. in 42 disciplines, 4 years B.S. professional degrees in Environmental Science, Home Economics, Sociology, BFA Textile Design, Graphic Design, Visual Arts, Interior Design, B.Com, Business Administration, Business Public Administration, BS-CS, B.E. in Electronics, and 5 years Pharm-D and Architecture. The University also offers MS degrees in 28 subjects. Besides this, the Ph.D. programs in 17 disciplines i.e. Chemistry, Biotechnology,

Botany, Computer Science, Mathematics, Education, Applied Psychology, Islamic Studies, Zoology, Environmental Science, Physics, Political Science, Urdu, Punjabi, Persian and Fine Arts are running successfully.

The 21st century has brought a drastic revolution in science, which has completely transformed the world. Today sciences are exploring areas that defy imagination. Keeping in line with the importance of the sciences in today's world, LCWU has been fulfilling the demand of the female students in the area, as this was the only institution offering science subjects at undergraduate level. This is evident from the fact that majority of the female doctors serving and retired, have at some stage; F.Sc. or B.Sc. studied at Lahore College. Since 1922 the college has proved its worth as the highest seat of learning for science subjects. At present Botany, Chemistry, Physics, Zoology, Mathematics, Economics, Statistics, Electronics, Environmental Science, Computer Science, City and Regional Planning, Architecture and Pharmacy are taught at Graduate and MS Level in the Faculty of Science and Technology.

LCWU is cognizant of the significance of Humanities and Social Sciences since they contribute to the aesthetic sense of human beings and are essential for the society. The Department of English, being 70 years old, is the oldest post-graduate department of the University. Founded by Prof Ms. U.K. Sirajuddin, it is still rooted in the traditions of scholarship and academic excellence. Besides English, Urdu, Punjabi, Islamic Studies, International Relations, Political Science, Fine Arts, Pakistan Studies, Mass Communication, Gender and Development Studies are being offered at the BS and MS level. The graduates of LCWU take their place in moral, intellectual and professional leadership in all walks of national life. Among its alumni are an extra ordinary number of teachers, physicians and professionals in all fields of life. Since the establishment of LCWU as a University, the institution has strived for improvement in Higher Education. MoU's with various national industries and linkages with foreign universities have been established in the field of Pharmacy, Electrical Engineering, Environmental Science, Fine Arts, Economics, Mass Communication, TESOL, Architecture, City and Regional Planning and Gender and Development Studies through the DFDI.

The Intermediate College of Lahore College for Women University is affiliated with the Board of Intermediate and Secondary Education (BISE), Lahore for the purpose of curricula and examination. The Intermediate College has proved to be a very fruitful nursery in providing women force for professional education in the province.



Photo Gallery





Computer Lab for Intermediate College



Punjabi Takra 2



Basket Ball Winner intercollegiate Girls championship 2022-2023



Handball Winner intercollegiate Girls championship 2022-23



Art and Creative Writing Contest organized by Rainbow Mega Event and Painting



Cricket Winner intercollegiate Girls championship 2022-2023



Athletics Winner intercollegiate Girls championship 2022-2023



Intermediate College Administration Staff

Vice-Chancellor
Principal
Registrar
Controller of Examination
Treasurer
Director Students Affairs
Head Intermediate Science Program
Head Intermediate Arts Program
Assistant Registrar (Estt.)
Senior Estate Officer
Deputy Director Purchase
Transport Officer
Superintendent
Senior Computer Operator
Assistant
Personal Assistant
Demonstrator
Demonstrator
Demonstrator
Senior Clerk
Junior Computer Operator
Junior Computer Operator
Junior Clerk
Junior Clerk
Junior Clerk
Machine Operator
Record Keeper
Daftari
Naib Qasid
Naib Qasid
Naib Qasid

Prof. Dr. Shaugfta Naz
Prof. Dr. Safia Anjum
Mr. Babar Khan
Ms. Huma Saeed
Mr. Muhammad Younas
Dr. Sumera Sajjad (Associate Prof. Zoology)
Dr. Naila Amjad (Assistant Prof. Statistics)
Dr. Saima Batool (Assistant Prof. Punjabi)
Ms. Navera Hammad
Mr. Sheikh Ghias-ud-Din Ahmad
Mr. Qadeer Salehri
Mr. Shahid Hussain
Mr. Muhammad Razaq
Mr. Aftab Ahmad
Mr. Afzaal Aslam
Ms. Anum-un-Nisa
Ms. Zainab Mohsin
Ms. Faiza Shahid
Ms. Shireen Shahid
Mr. Muhammad Mudassir
Ms. Waqar un Nisa
Mr. Muhammad Awais
Mr. Muhammad Awais
Mr. Tahseen Wadood
Ms. Hina Bashir
Mr. Muhammad Tariq
Ms. Saira Khalid
Mr. M. Munim-ud-Din
Mr. Abdul Rehman
Mr. Salman Nazir
Ms. Saba Zahid



Academic Programs

Intermediate Morning Programs

Courses of Study:

Compulsory Subjects

All students of Science and Arts will study the following compulsory subjects:

- Urdu. (However, foreign Students may study Pakistani Culture, after seeking prior permission from the Controller of Examinations B.I.S.E. Lahore by their own self.)
- English
- Islamic Education in Part-I, Religious Education (option for Non-Muslim Students)
- Translation of Holy Quran, Ethics (option for Non-Muslim Students)
- Pakistan Studies in Part-II

1. Science Groups (2023-2025)

- Pre-Medical (Physics, Chemistry, Biology)
- Pre-Engineering (Physics, Chemistry, Mathematics)

2. ICS Groups (2023-2025)

- ICS (Physics, Mathematics, Computer Science)
- ICS (Statistics, Mathematics, Computer Science)
- ICS (Economics, Mathematics, Computer Science)

3. General Science Groups (2023-2025)

- (Mathematics, Statistics, Economics)

4. Commerce Groups (2023-2025)

- I. Com [Part-I] (Principles of Accounting, Principles of Economics, Principles of Commerce, Business Mathematics)
- I.Com [Part-II] (Principles of Accounting, Commercial Geography, Banking, Business Statistics)

5. Home Economics Groups (2023-2025)

- Home Economics [Part-I] (Biology and Chemistry, Home Management, Clothing and Textile)
- Home Economics [Part-II] (Applied Art, Food and Nutrition, Child Development and Family Life)

6. Arts (Humanities) Groups (2023-2025)

- Select only one group from the following groups to complete three elective subjects.
- Select any one of the language (English Literature, Urdu Adv., Arabic, French, Persian, Punjabi)

(Note) Candidates cannot be allowed to take two languages as elective subject.

Elective Subjects				
Faculty	Set No.	Subject-I	Subject-II	Any one Language (Subject-III)
Arts (Humanities)	H-1	Geography	Statistics	English Literature / Persian / Urdu Advanced
	H-2	Psychology	Economics	English Literature / Persian / Urdu Advanced
	H-3	History of Islam	Fine Arts	English Literature / Persian / Urdu Advanced
	H - 4	Civics	Fine Arts	Punjabi / Arabic / French
	H-5	Islamiyat	Education	Punjabi / Arabic / French
	H-6	Civics	Economics	Punjabi / Arabic / French
	H-7	Philosophy	Education	English Literature / Persian / Urdu Advanced
	H-8	Physical Education	Sociology	Punjabi / Persian / Urdu Advanced
	H-9	Mathematics	Economics	English Literature / Persian / Urdu Advanced
	H-10	Psychology	Sociology	Punjabi / Arabic / French

(Note)

In case any student (only for Arts group) wants to change the group of elective subjects, she shall apply for the same within one week from the date of admission on a prescribed form to be obtained from the Principal's office. However, the students are advised to choose the group / faculty (subjects) carefully, before applying for admission.

Students who wish to study Fine Arts and English Literature are required to qualify an Aptitude Test on the date notified by the College before admission. Participation in the march-past on Sports day is compulsory for the students studying Physical Education. Students selected on sports seats must take Physical Education as an elective subject.

Students must apply separately for each faculty if interested because all faculties have separate merit and no form interchangeable for another faculty. Change of subject / faculty possible on merit only subject to the availability of seat.

Intermediate Self-Supporting (Evening Programs)

Compulsory Subjects

All students of Science and Arts will study the following compulsory subjects:

- Urdu. (However, foreign Students may study Pakistani Culture, after seeking prior permission from the Controller of Examinations B.I.S.E. Lahore by their own self.)
- English
- Islamic Education in Part-I, Religion Education (option for Non-Muslim Students)
- Translation of Holy Quran, Ethics (option for Non-Muslim Students)
- Pakistan Studies in Part-II

1. Science Groups (2023-2025)

- Pre-Medical (Physics, Chemistry, Biology)
- Pre-Engineering (Physics, Chemistry, Mathematics)

2. ICS Groups (2023-2025)

- ICS (Physics, Mathematics, Computer Science)
- ICS (Statistics, Mathematics, Computer Science)
- ICS (Economics, Mathematics, Computer Science)

3. Commerce Groups (2023-2025)

- I. Com [Part-I] (Principles of Accounting, Principles of Economics, Principles of Commerce, Business Mathematics)
- I.Com [Part-II] (Principles of Accounting, Commercial Geography, Banking, Business Statistics)

4. Arts (Humanities) Groups (2023-2025)

- Select only one group from the following groups to complete three elective subjects.
- Select any one of the language (English Literature, Persian, Punjabi)

(Note) Candidates cannot be allowed to take two languages as elective subject.

Elective Subjects				
Faculty	Set No.	Subject-I	Subject-II	Any one Language (Subject-III)
Arts (Humanities)	H-1	Psychology	Fine Arts	Persian / English Literature / Punjabi
	H-2	Civics	Education	Persian / English Literature / Punjabi
	H-3	Civics	Fine Arts	Persian / English Literature / Punjabi

Under Graduate and Postgraduate Programs

Bachelor Program

An overview of LCWU's Bachelor Program would help you to identify your interests and aptitude, and facilitate planning for your future while choosing subjects to study.

•B.S. (4-Year Degree Course)

LCWU offers B.S Program in 42 disciplines as given below:

Architecture, Biotechnology, Botany, Chemistry, City and Regional Planning, Physics, Zoology, Economics, Mathematics, Gender and Development Studies, Geography, Statistics, Sociology, History, Home Economics, Environmental Science, English, Urdu, Punjabi, Applied Psychology, Political Science, Pakistan Studies, International Relations, Mass Communication, Education, Social Work, Islamic Studies, Arabic, Persian, Physical Education, Philosophy, BBA, B.Com, BPA, B. Electrical Engineering, BFA Graphic Design, Visual Arts, Interior Design, Craft and Textile Design, Computer Science.

5-Year Degree Program

- Architecture
- Physical Therapy
- Pharm-D

M.S. / PHIL. Programs (After 16 Years of Education)

LCWU offers M.S Program in 29 disciplines as given below:

Biotechnology, Botany, Chemistry, City and Regional Planning, Computer Science, Geography, Economics, English Literature, Environmental Science, Electrical Engineering, Education, MFA, M.S Fine Arts Studio Practice, History of Arts, Health Psychology, Gender and Development Studies, Islamic Studies, Management Science, Mass Communication, Mathematics, Physics, Political Science, Persian, Punjabi, Statistics, Urdu, TESOL, Zoology, History.

M.PHIL. (Pharmacy) Program (After 16 Years of Education)

LCWU offers M. Phil (Pharmacy) Program in 05 disciplines as given below:

Pharmacology, Pharmacy Practice, Pharmacognosy, Pharmaceutics, Pharmaceutical Chemistry

Ph.D. Program

Besides offering post-graduate courses in 20 disciplines, the Ph.D. programs are being offered in the following subjects:

Applied Psychology, Biotechnology, Botany, Chemistry, Computer Science, City and Regional Planning, Education, Environmental Science, Fine Arts, Islamic Studies, Mass Communication, Mathematics, Management Science, Physics, Pharmacology, Political Science, Punjabi, Persian, Urdu, Zoology.



Academic Departments (Faculty)

Department of Arabic

- Dr. Qurat-ul-Ain Tahira Ph.D., M.A [Arabic and Isl.], B.Ed. (PU), Assistant Prof.
- Ms. Sobia Maryam Ph.D. (Scholar) M.Phil. (PU), Lecturer
- Ms. Hafiza Farwa Iftikhar Ph.D. (Scholar), M.Phil. (MUL), Lecturer

Visiting Staff

- Ms. Seemab Jamil Ph.D. (Scholar), M. Phil. (GCU), M.A (PU), Visiting Lecturer
- Ms. Azzah Khadim Ph.D. (Scholar), M. Phil. (PU), M.Phil (Pharmacy UCP), Visiting Lecturer

Department of Applied Psychology

- Prof. Dr. Amina Muazzam Ph.D., M.Sc. (PU), Professor (TTS) / Chairperson
- Dr. Amina Obaid Khawaja Ph.D. (LCWU), M.Phil. (GCU), M.Sc. (PU), Assistant Prof.
- Dr. Amna Khawar Ph.D., M.S (LCWU), M.Sc. (PU), Assistant Prof.
- Dr. Nudra Malik Ph.D., M.S (LCWU), M.Sc. (PU), Assistant Prof.
- Dr. Bisma Ejaz Ph.D., M.S., M.Sc. (LCWU), Assistant Prof.
- Dr. Saima Ahmad Ph.D., M.S. (LCWU), M.Sc. (PU), Assistant Prof.
- Dr. Umm-e-Rubab Kazmi Ph.D. (LCWU), M.S, M.Sc. (GCU), Assistant Prof.
- Dr. Marium Gul Ph.D. (PU), M.Phil. (GCU), M.Sc, Lecturer
- Ms. Sana Belal Ph.D. (Scholar), M.Sc. (PU), Lecturer
- Dr. Saima Eman Ph.D. (The University of Sheffield, UK), M.Sc. (UK), Lecturer
- Ms. Maryam Bawer M.Phil. (GCU), M.Sc. (NICE), Lecturer
- Dr. Toseef Imtiaz Ph.D. (LCWU), M.Phil., M.Sc. (PU), Lecturer
- Ms. Tehziba Kausar M.S. (LCWU) Gold Medalist, Lecturer
- Ms. Zunaira Shabbir M.S. (LCWU), Lecturer
- Ms. Mubeena Munir M.S. (PU), Lecturer

Department of Botany

- Prof. Dr. Zubaida Yousaf Post. Doc. (China), Ph.D. (Q.A.U.), M.Sc. (U.A.A), Chairperson
- Dr. Sumera Iqbal Ph.D. (QAU), M.Sc. (UAA), Associate Prof. (TTS)
- Dr. Shabnam Shaheen Post. Doc. (Malaysia), Ph.D. (Q.A.U), M.Sc. (U.A.A), Associate Prof. (TTS)
- Dr. Khajista Jabeen Ph.D. (PU), M.Sc., Associate Prof. (TTS)
- Dr. Sumera Javad Post Doc. (USA), Ph.D., M.Sc. (LCWU) Gold Medalist, Associate Prof. (TTS)
- Dr. Sobia Ilyas Ph.D. (LCWU), IRSIP Fellowship (USA), BS (Hons) (PU), Associate Prof.
- Dr. Samina Sarwar Ph.D. (PU) IRSIP Fellowship (UK), M.Sc., Assistant. Prof.
- Dr. Mobina Ulfat Ph.D. (GCU), M. Phil., M.Sc., (UAF), Assistant Prof.
- Dr. Sana Khalid Post Doc., Ph.D. (PU) M. Phil, M.Sc. ((PU), Assistant Prof.
- Dr. Kiran Shahzadi Ph.D. (LCWU), M. Phil (GCU), M.Sc. (PU), Assistant Prof.
- Dr. Riffat Siddique Ph.D. (LCWU), M.Sc. (PU), Assistant Prof.
- Dr. Hannan Mukhtar Ph.D. (LCWU), M.Sc. (PU), Assistant Prof.
- Dr. Amina Tariq Ph.D. (LCWU), M.Phil., M.Sc. (GCU), Assistant Prof.
- Dr. Arusa Aftab Ph.D., M.Phil. 1st Position (LCWU), M.Sc. Gold Medalist (GCU), Assistant Prof.
- Dr. Zaryab Khalid Ph.D., M.S (LCWU), Assistant Prof.

Supporting Staff:

- Ms. Shaheen Qasim, Lecture Assistant
- Mr. Muhammad Wasim, Junior Clerk
- Ms. Tayyiba Khaliq, Lecture Assistant (on daily wages)

Department of Chemistry

- Prof. Dr. Bushra Naseem Post Doc. (Bristol U.K), Ph.D. (QUA), M.Phil. (Tenured Professor) / Chairperson
- Prof. Dr. Sadia Rashid Tariq Ph.D. (QAU), M.Phil., Tenured Professor
- Prof. Dr. Erum Akbar Hussain Ph.D., M.Sc. (KU), Tenured Professor
- Dr. Shahida Shujaat Post Doc. (Uni. of Cincinnati Ohio USA), Ph.D. (KU), M.Phil. (QAU), Tenured Associate Prof.
- Dr. Sana Ahmad Ph.D. (Uni. of Bordeaux France), M.Sc. Hons. (PU) Tenured Associate Prof.
- Dr. Abida Yasmeen Ph.D. (QAU), M.Phil., M.Sc. (UAF), Assistant Prof.
- Dr. Fouzia Iram Ph.D. (PU), M.Phil. (GCU), M.Sc. (PU), Assistant Prof. (TTS)
- Dr. Shahnaz Ph.D. (HEJ), M.Sc. (HEJ), Assistant Prof. (TTS)
- Dr. Rehana Kausar Ph.D. (South Korea), M. Phil. (BZU), Assistant Prof. (TTS)
- Dr. Rabia Raza Post Doc. (Peking Uni. China), Ph.D., M.Phil. (BZU), Assistant Prof. (TTS)
- Dr. Rabia Babar Ph.D., M. Phil. (PU), Lecturer
- Dr. Nazish Saleem Ph.D., M. Phil. (PU), Lecturer
- Ms. Syeda Nazish Arshad M.S. (LCWU), Lecturer (on study leave)
- Ms. Touseef Kazmi M.S (LCWU), Lecturer (on study leave)
- Ms. Hadeeqa Aslam M.S. (LCWU, Gold Medalist), Lecturer
- Ms. Saneea Ata-ul-Haq M. Phil. (QAU), Lecturer

Department of Computer Science

- Prof. Dr. Muhammad Abuzar Fahiem Ph.D. (UET), Professor
- Dr. Saima Farhan Ph.D., MS-CS (LCWU), Chairperson / Associate Prof.
- Dr. Huma Tauseef Ph.D., MS-CS (LCWU), Associate Prof.
- Dr. Mariam Nosheen Ph.D., MS-CS (LCWU), Assistant Prof.
- Dr. Ayesha Iqbal Ph.D., MS-CS (LCWU), Assistant Prof.
- Dr. Maria Saleemi Ph.D., MS-CS (LCWU), Assistant Prof. (on leave)
- Dr. Komal Bashir Ph.D., MS-CS (LCWU), Assistant Prof.
- Ms. Humaira Kauser MS-CS (LCWU), Assistant Prof.
- Dr. Faria Kanwal Ph.D., MS-CS (LCWU), Assistant Prof.
- Dr. Maria Anjum Ph.D. (Durham, UK), Assistant Prof.
- Dr. Fahima Tahir Ph.D., MS-CS (LCWU), Assistant Prof.
- Dr. Ayesha Afzaal Ph.D., MS-CS (UET), Assistant Prof.
- Dr. Fatima Anjum Ph.D., MS-CS (UAF), Assistant Prof.
- Dr. Usman Ahmad Ph.D. (UTM, Malaysia), Assistant Prof.
- Dr. Sidra Rafique Ph.D., MS-CS (GCU), Lecturer
- Dr. Rabia Javed Ph.D. (UTM, Malaysia), MS-CS (LCWU), Lecturer
- Ms. Khansa Atif MS-CS (LCWU), Lecturer

Supporting Staff:

- Ms. Wajeeha Malik, MS-CS (LCWU), Computer Instructor
- Ms. Ambreen Amna MS-CS (LCWU), Computer Instructor
- Ms. Attia Anis MS-CS (LCWU), Computer Instructor (on leave)

Department of Economics

- Dr. Muhammad Afzal Ph.D. (PU), M. Phil (GCU), M.A. (PU), Professor
- Dr. Samia Nasreen Ph.D. (GCUF), M.Phil. (PU), M.Sc. (LCWU), Chairperson / Associate Prof.
- Ms. Uzma Shahid M.Phil. (GCU), M.A (PU), Assistant Professor (on study leave)
- Ms. Ramsha Saleem M.Phil. (BZU), M.Sc. (IUB), Assistant Professor
- Dr. Shazia Kousar Ph.D., M.Phil. (SU), M.A.(PU), Assistant Prof. (TTS)
- Dr. Saima Liaqat Ph.D. (PU), Assistant Prof.

- Dr. Ammara Amjad Hashmi Ph.D., M.Phil. (SU), M.A.(PU), Assistant Prof.
- Ms. Erum Aziz M.Phil. (LCWU), M.A. (PU), Lecturer
- Ms. Asma Khalid M.Phil. (GCU), M.Sc. (LCWU), Lecturer
- Dr. Hafsa Batool Ph.D. (PU), M.Phil. (LCWU), M.A. (SU), Lecturer
- Ms. Sara Khalid M.Phil. (BZU), Lecturer (on study leave)
- Ms. Mehtab Arif M.Phil. (LCWU), M.Sc. (QAU), Lecturer
- Ms. Javaria Jamil M. Phil. (COMSATS), M.Sc. (GCU), Lecturer
- Ms. Naghmana Ghaffor M.Phil. (GCU), M.A (P.U), Lecturer
- Dr. Mehr-un-Nisa Ph.D. (UOK), M.Phil. (AERC.UOK), M.A (IUB), Lecturer
- Ms. Sajida Kamran M.Phil. (PU), M.A (PU), Lecturer
- Ms. Hina Amber M.Phil., B.S. (Hons) (GCU), Lecturer (on study leave)
- Ms. Duryab Fatima M.Phil., B.Sc. (Hons) (LSE), Lecturer
- Ms. Amna Rubab M.Phil. (PIDE), B.S. (Hons) (KC), Lecturer (on ex-Pakistan leave)
- Ms. Bushra Mushtaq M.Phil., M.Sc. (PU), Lecturer (on study leave)
- Ms. Khadija Zafar M.Phil. (FCCU), B.S. (Hons) (LCWU), Lecturer (on Extra Ordinary Leave)
- Ms. Marium Shafi M.Phil. (PIDE), M.Sc. (PU), Lecturer (on study leave)
- Ms. Fatima Ahmad M.Phil. (FCCU), M.Sc. (PU), Lecturer
- Ms. Bushra Ahmad M.S. (International Islamic Uni. Islamabad), Lecturer

Department of Education (Planning and Development)

- Dr. Ghazala Noureen Post-Doc., Ph.D., (UK), HOD / Associate Prof.
- Dr. Ayesha Batool Ph.D. (PU), Assistant Prof.
- Ms. Romanan Imran Lecturer (on Study leave)
- Ms. Sadiya Iqbal Ph.D. (Scholar), Lecturer.
- Ms. Iqra Toor M.S, B.S. Hons. (LCWU), Lecturer (on ex-Pakistan leave)
- Ms. Iqra Asim M.S. (PU), Lecturer
- Ms. Naila M.S. (LCWU), Lecturer
- Ms. Shazia Ejaz Ph.D., (Scholar), Teaching Assistant
- Ms. Rakhshanda Naeem Ph.D. Scholar, M.S (LCWU), M.Ed. (Uni. of Education), Teaching Assistant

Visiting Faculty:

- Dr. Faiza Ph.D. (PU), Professor
- Ms. Zainab Salman M.S. Scholar, M.F.A (PU), Lecturer
- Ms. Lubna Shahzadi Ph.D. Scholar, M.S Education (LCWU), M.A. History (PU), Lecturer
- Ms. Hira Akash M.S Electrical Engineering (LCWU), B.E. (LCWU), Lecturer
- Ms. Sidra Younis Ph.D. Scholar, M.S Botany (LCWU), Lecturer
- Ms. Nadia Saleem Ph.D. Scholar (PU), M.S (LCWU), M.A., Lecturer
- Ms. Tahseen Arshad Ph.D. Scholar, M.S., (LCWU), Lecturer
- Ms. Madiha Zahid Ph.D. Scholar, M.S. (LCWU), Lecturer

Department of Physics

- Prof. Dr. Zohra Nazir Kiyani Ph.D., M.Sc. (PU), Professor, / Chairperson
- Prof. Dr. Safia Anjum Ph.D. (UET), M. Phil (QAU), M.Sc. (LCWU), Professor / Principal
- Dr. Zeba Israr Ph.D., M. Phil, M.Sc. (GCU), Assosicate Prof. (TTS)
- Dr. Aneeqa Sabah Ph.D. (Thailand), M.Phil, M.Sc. (PU), Associate Prof. (TTS)
- Dr. Alliya Qamar Ph.D. (LCWU), M.Phil., M.Sc. (PU), Assistant Prof.
- Dr. Shafaq Arif Ph.D. (LCWU), M.Phil (UET), M.Sc.(GCU), Assistant Prof.
- Dr. Madeeha Riaz Ph.D., M.S (LCWU), Assistant Prof. (on Adhoc)

- Dr. Salma Wasim Ph.D. (LCWU), M.Phil, M.Sc. (PU), Assistant Prof. (on Adhoc)
- Dr. Talat Zeeshan Ph.D. (LCWU), M.Phil. (UET), M.Sc. (GCU), Assistant Prof. (on Adhoc)
- Dr. Saima Khalid Ph.D. (LCWU), M.Phil. (UET), M.Sc. (GCU), Lecturer
- Ms. Afshan Rashid M.S (LCWU), M.Sc. Physics (PU), Lecturer
- Dr. Hina Irfan Ph.D., MS (LCWU), M.Sc. (PU), Lecturer
- Ms. Rabia Khurram M.S (LCWU), M.Sc. (PU), Lecturer
- Ms. Saba Tehniat M.S (GCU), M.Sc. (PU), Lecturer
- Dr. Farah Anjum Ph.D. (UAF), M.S (GCU Fsd.), M.Sc. (PU), Teaching Assistant

Department of Pakistan Studies

- Dr. Sobia Naseer Ph.D., M. Phil (PU), M.Sc. (Q.A.U), Assistant Prof. / Incharge
- Ms. Afshan Aziz M.S. (LCWU), M.A. (GCU), Assistant Prof.
- Ms. Bushra Zeeshan M.A (LCWU), Lecturer
- Ms. Shakeela Hashim Ph.D. (Scholar), M.Phil. (GCU), Lecturer
- Ms. Raheela Shafique M.A. Pol. Sci., M.A. History (PU), Lecturer
- Ms. Nadira Shafi M.S. (LCWU), B.S (LCWU), Lecturer
- Ms. Hamna Khan M. Phil (PU), B.S. (LCWU), Lecturer

Department of Political Science

- Dr. Aisha Shahzad Ph.D. (LCWU), M. Phil, M.A (PU), Associate Prof.
- Dr. Sadia Mahmood Falki Ph.D. (LCWU), M.Phil. (GCU), M.A (GCU), Assistant Prof.
- Dr. Saima Butt Ph.D., M. Phil (PU), M.A. (LCWU), DIA (PU), Assistant Prof.
- Dr. Sadia Ashraf Rana Ph.D. (LCWU), M.Phil. (PU), M.A (LCWU), DOM (PU), Lecturer
- Ms. Shanza Noor M. Phil., B.S. (KU), Lecturer
- Ms. Fazeelat Razzaq M. Phil. (KU), B.S. (LCWU), Lecturer

Department of Punjabi

- Prof. Dr. Mujahida Butt Ph.D. (PU), M.Phil. EPM(AIOU), M.Sc. (Pak. Std. AIOU), M.Ed., M.A. [Punjabi, Urdu, Pol. Sc. PU], HOD
- Dr. Samina Batool Ph.D. (LCWU), M.A. (PU), B.Ed., Associate Prof.
- Dr. Hina Khan Ph.D. (LCWU), M.A. (PU) Gold Medalist, Assistant Prof. (TTS)
- Dr. Ayesha Rahman Ph.D. (LCWU), M.A. (PU), B.Ed., Assistant Prof.
- Dr. Saima Batool Ph.D. (LCWU), M.S (LCWU) Gold Medalist, M.A (PU), L.L.B (PU), Assistant Prof.
- Dr. Marym Sarfraz Ph.D., M.S. (LCWU) Gold Medalist, B.S. (LCWU) Gold Medalist, Assistant Prof.
- Dr. Almas Tahira Ph.D., M.S. (LCWU), Lecturer
- Dr. Sonia Allah Rakha Ph.D. (LCWU) Gold Medalist, M.S (LCWU) Gold Medalist, B.S. (LCWU) Gold Medalist, Assistant Prof.

Department of Statistics

- Dr. Asifa Kamal Post Doc. (Southampton Uni.UK), Ph.D., M.Phil. (GCU), M.Sc., B.Ed. (PU), Associate Prof.
- Dr. Naila Amjad Ph.D., M.Phil. (NCBA & E), M.Sc. (PU), Assistant Prof.
- Ms. Rashida Khaleel M.Phil., M.Sc. (GCU), Assistant Prof. (on study leave)
- Ms. Shazia Kashif M.Phil. (GCU), M.Sc., M.A. Economics (PU), Assistant Prof. (on ex- Pakistan leave)
- Dr. Mariyam Hafeez Ph.D. (PU), M.Phil., M.Sc. (GCU), Assistant Prof.
- Ms. Tahira Bano M. Phil, M.Sc. (PU), Assistant Prof.
- Ms. Naz Saud M.Phil., M.Sc. (PU), Assistant Prof. (on EOL)
- Dr. Sadia Khalil Post Doc. (Uni. of North Carolina, Greensboro USA), Ph.D. (NCBA & E), M.Phil. (GCU), M.Sc. (GCU), Assistant Prof. (on EOL, Ex-Pakistan Leave)
- Ms. Sameena Irfan M.Phil., M.Sc. (PU), Lecturer
- Ms. Ayesha Shafiq M.Phil. (UAF), M.Sc. (PU), Lecturer

- Ms. Afza Rasool M.Phil., M.Sc. (PU), Lecturer (on study leave)
- Ms. Asma Zeb M.Phil. (GCU), M.Sc. (LCWU), Lecturer (on EOL, Ex-Pakistan Leave)
- Ms. Maria Aslam M.Phil., M.Sc. (UAF), Lecturer
- Ms. Anum Fatima M.S., B.S (LCWU), Lecturer (on Ex-Pakistan Leave)
- Dr. Sehar Saleem Ph.D. (PU), M.S. (Uppsala Uni. Sweden), M.Sc. (UAF), Lecturer
- Ms. Shahana Khan M.S. (COMSAT) B.S. (LCWU), M.Sc. (PU), Lecturer
- Ms. Sidra Sajjad M.Phil., M.Sc. (PU), Lecturer
- Ms. Noor Shahid M.Phil. (PU), B.S. (LCWU), Lecturer
- Ms. Jiya Amir M.S., B.S. (LCWU), Lecturer

Supporting Staff

- Mr. Suleman Arshad, Lab Supervisor
- Mr. Saif Ullah, Junior Clerk
- Ms. Iqra Roshan, Lecture Assistant

Department of Urdu

- Dr. Rehana Kausar Ph.D., M.Phil. (GCU), M.A., B.Ed. (PU), COD / Associate Prof.
- Dr. Azmat Rubab Ph.D. (PU), M.Phil. (AIOU), M.A (PU), Associate Prof.
- Dr. Tahira Sarwar Ph.D. (LCWU), M.Phil. (GCU), M.A (LCWU), Associate Prof.
- Dr. Shazia Razzaq Ph.D. (PU), M.Phil. (PU), M.A. (PU), B.Ed. (PU), Assistant Prof.
- Dr. Noreen Razzaq Ph.D. (PU), M.Phil. (PU), M.A, B.Ed. (PU), Assistant Prof.
- Dr. Aziza Saeed Ph.D., M.Phil. (GCU), M.A (GCU), Assistant Prof.
- Dr. Arooba Siddiqui Ph.D. (Iqbaliyat), M.A (PU), Gold Medalist, Assistant Prof.
- Dr. Naila Anjum Ph.D. (GCU), M.Phil. (GCU), M.A (LCWU) B.Ed. (A.I.O.U.), Assistant Prof.
- Dr. Qadeer Anjum Ph.D. (PU), M.Phil. (GCU), M.A (PU), Assistant Prof.
- Dr. Shabnam Niaz Ph.D. (GCU), M.Phil. (GCU), M.A. (PU), B.Ed. (AIOU), Assistant Prof.
- Dr. Hina Kanwal Ph.D. (GCU), M.Phil., M.A (BZU), B.Ed. (EU), Assistant Prof.
- Dr. Khizra Tabassum Ph.D. (PU), M.Phil., M.A. (PU), Lecturer
- Ms. Rafia Zubair Ph.D. Scholar, M.S, B.S (LCWU), Lecturer

Department of Zoology

- Prof. Dr. Farkhanda Manzoor Post Doc. (USA), Ph.D. (PU), M.Sc. (PU), M.Ed. (Sci. Edu.), PGD Environmental Law (PU), HOD.
- Dr. Husna Mailk Ph.D. (LCWU), M.Sc. (PU), Associate Prof.
- Dr. Farah Ashfaq Ph.D. (LCWU), M.Sc. (PU), Assistant Prof.

Technical Staff

- Mr. Babar Amjad Khan, Computer Hardware Technician
- Mr. Naveed Ahmad, Lecture Assistant
- Mr. Tasvawar Hussain, Lecture Assistant
- Mr. Tariq Akhlaq, Lecture Assistant

Admission Rules

Admission to various classes at Lahore College for Women University, Lahore is granted on merit in accordance with the rules and policy of the Government of the Punjab, on the dates notified by the BISE (Board of Intermediate and Secondary Education, Lahore). Admission notice is duly advertised in the local newspapers, with the condition that no application form will be accepted after the notified last date. Subsequent to the completion of all the necessary stages of admission, the lists of successful candidates selected on merit, are displayed on the official website. The admission of the student's who fail to pay their dues in time, is cancelled.



Application Procedure

- The candidates are required to fill out online admission forms for F.A / F.Sc. all seats (open merit, reserved and additional seats).
- Every candidate is required to enclose attested photocopies of the following compulsory documents with their downloaded admission form after the display of merit lists within due date of fee submission.

Documents Required

- Detailed marks sheet of Matriculation (Three copies attested).
- Result cards of O-Level Certificate (Three copies attested). Proper Equivalence attested by I.B.C.C (Two copies) must be submitted in the admission office till the admission process otherwise College will not be responsible for BISE registration.
- Provisional / Character Certificate from the Head of the institution last attended.
- Photocopy of Migration certificate and three attested photocopies of the result card from the former Board (this condition is for those candidates who have passed their matriculation examination from other Boards).
- Original Migration certificate (NOC) must be submitted at the time of admission.
- Three photocopies of the National Identity Card of Father/Guardian.
- Monthly income certificate of Father / Guardian.
- Three copies of "Bay Form" (NADRA) on (compulsory basis).
- Eight (08) photographs with white background (non-attested) size 1.5"x 1.5".
- The candidate must not be above 18 years of age on the last date of the receipt of admission forms.
- Admission on general seats is granted strictly on merit.

Important Note:-

As per the online Lahore Board "Registration and Admission System" students cannot be admitted / registered with hore Board from two institutions simultaneously. Therefore, a candidate have been admitted in any other college of Lahore Board jurisdiction must have to quit that and have her online board registration through that institution cancelled. In ase she fails to do so her admission at LCWU would be considered cancelled. If any student wants to quit from LCWU after

seeking admission due to any reason she must inform the Principal's office through a written application, otherwise she will be responsible for subsequent complications during her academic session. **It is mandatory for all students to fulfill board registration and admission forms (signature, photograph and thumb impression) in Part-I and Part-II if student fail to do so, college will not responsible for any discrepancy in their registration and admission process. Students must check their name, father's name, B-Form number, phone number and date of birth (for other province students) before signing and thumb impression. Students is responsible to pay fine as levied by BISE for any mistake in their registration and admission forms.**

Reserved Seats

- Disabled Student Seats

2% of the total seats are reserved for physically challenged students. Candidates must enclose certificate of their physical disability signed by the M.S. Services Hospital with their forms and appear for interview on the date notified. Physical disability means disability which cannot be rectified by any equipment. Short sightedness and being hard of hearing do not fall under the definition of disability.

- Sports Seats

2% of the total seats are reserved for Sports basis (only for Humanities Group). Only District/ Board level players can apply against these seats.

- Foreign Students Seats

15 seats are reserved for foreign students must have foreign national passport and CNIC. They will be required to pay Rs. 109,810/- along with normal fee for Part-I and Part-II separately.

- Minority Seats

5 seats are reserved for minority students. They must provide their religious certificate at the time of admission / interview. Science subject will be allowed only those students who have passed matriculation examinations in science subjects obtaining 90% marks.

Important Note:-

Foreign student's fee is non-refundable. It can only be refunded if the name of the student falls on the subsequent open merit list and she does not continue her studies at any other institutions.

Senior Cambridge / O' Level Students

10% seats are reserved for the Senior Cambridge / O-level students. They will apply for admission along with the Matriculation students. The candidates seeking admission in F.Sc. must have studied Science Subjects in O-level / Senior Cambridge. They must have passed four elective subjects along with the compulsory subjects. The selected candidates must submit their result cards and Equivalence Certificates (Three copies attested by I.B.C.C office) with their forms, otherwise they will not be registered with B.I.S.E Lahore.

Additional Seats

Total 30 seats are reserved (5 seats each) for FATA and KPK, Azad Jammu and Kashmir, and other Provinces. Application of these candidates will be entertained only if they have passed their Matriculation Examination from a School situated in the respective area. They should apply through their respective Provincial Govt. Education Department.

Migration

Migration from other cities according to the B.I.S.E, Lahore rules, is allowed only on fulfillment of the following conditions: -

- Transfer of a parent's job or transfer of residence of parents.
- The candidate's Matric marks must not be below the College merit.
- Payment of College dues per annum at the time of migration is compulsory.
- Students migrating from other cities are not eligible for hostel accommodation.

Important Note:-

The college administration reserves the right to cancel the provisional admission / migration of a candidate, if at any stage after the admission / migration, it comes to their knowledge that the documents presented by her are fake or there is a mis-statement or clerical error in the documents.

College Roll Number / Section Slip

After payment of dues, each candidate is required to see the teachers on duty and get the College Roll No. and Section issued at the back of fee receipt otherwise her admission will be considered cancelled. In case of loss of fee slip, a duplicate can be issued on the payment of Rs. 200/- only. Change of Roll No. or Section is strictly prohibited with no exceptions.

Examinations

The Board of Intermediate and Secondary Education require the students to appear for Part-I and Part-II examinations separately. All the students of Part-I and Part-II are required to appear for internal Send-Up examinations before the final examinations otherwise their admission forms will be withheld. Monthly class tests are compulsory for all students and their marks will be counted towards the final assessment of internal grading.

The College is authorized to withhold the admission of any student whose attendance is less than 75% or if she is found guilty of gross misconduct. A fine of Rs. 500/- per subject shall be levied upon students who fail to show 75% attendance and Rs. 200/- per subject if a student fails to appear in the Send-Up examinations.

Medals

Students securing 1st position in the Lahore Board will be awarded Gold Medals by LCWU in their respective faculty.

Leave Rules

1. Leave is granted only in case of genuine need.
2. Leave up-to three days maximum can be granted in a month.
3. Students should apply for leave on medical grounds within a week of falling ill and it must be accompanied by a medical certificate from any government hospital duly verified by the Resident Doctor, LCWU. Leave for more than a month on medical grounds will not be granted.

Attendance rules and schedule of fines for Absence / Misconduct

- The schedule for fines due to absence is as follows:
- Students of Part-I and Part-II must recheck their board registration Form and admission Form before signing. After which office shall not be responsible for any correction from BISE, Lahore.
- A warning (SMS) for the reported month will be issued in the subsequent month to the parents of the students who remain absent in their relevant subjects.
- The students who remain absent in any subject and their attendance is less than 75% will not be allowed to sit for B.I.S.E Exams.
- The students who remain absent during send-up examinations will be fined Rs. 200/- per subject.
- The students who remain absent in co-curricular activities at the turn of their class will be fined Rs. 200/- per function.
- The students may get duplicate I.D. card, Character Certificate and Bus Card after payment of fine Rs. 365/- each.
- The students without I.D. card or without proper uniform, will be fined Rs. 200/-
- Students are expected to be regular, punctual and if a student remains absent from the College for three days in a month, her name will be struck off from the college rolls. If her absence is for genuine reason, the Principal may consider her application for re-admission.

Important Note:-

The name of a student will also be struck off the College rolls due to absence, non-payment of dues or rude behavior. She may be allowed re-admission by the Principal. The fee for readmission will be the admission fee prescribed in the Prospectus. However, readmission can be granted only once. 2nd time readmission, in specific cases, may be granted on payment of full tuition and admission fee.

Conduct and Behavior

The students of Lahore College for Women University, Lahore are expected to display a very high standard of personal behavior and conduct. The Vice-Chancellor is authorized to take suitable action against unbecoming behavior. All authority regarding maintenance of proper discipline is vested with the Vice-Chancellor, Staff Advisory Council and Proctorial Board. The decision of the Vice-Chancellor in all disciplinary matters will be final and binding on the students and their parents/guardians. She has the authority to suspend, expel or rusticate a student (Day Scholar or Boarder) in the greater interest of the College discipline. However, the defaulter will be given the right to clear her position before the Advisory Council / Proctorial Board.

College Uniform Dress Code

According to the College rules, every intermediate student of 1st shift and 2nd shift has to be in the college uniform. The prescribed uniform is: -



Summer

White cotton Shirt, Shalwar, White Dupatta and Black Shoes.

Winter

White cotton Shirt, Shalwar, White Dupatta, Black Shoes, Black Sweater and Black Shawl. Wearing the student's I.D. Card is a compulsory component of dress code. Students without I.D. Card will not be allowed to enter the college.

All the students are expected to observe simplicity. They are not allowed loud make-up or ostentatious jewelry. They are not allowed to wear jeans, tights and T-Shirts as well. Students violating the dress code will be fined Rs. 200/- per day.

Co-Curricular and Sports Activities

In order to facilitate co-curricular activities and sports there are over 50 students', societies and clubs. Presidents and Secretaries of these societies are nominated by the teachers. By participating in these activities, the students win prizes and thus uphold and strengthen the glorious tradition of the College. Our Intermediate players also represent



Pakistan at National and Asian level. Separate period is allocated for sports in the time table. Throughout the session LCWU has participated in the following tournaments.

- Inter-Collegiate (Intermediate) students participated in 14 games i.e. Netball, Football, Basketball, Hockey, Cricket, Volleyball, Handball, Badminton, Athletics, Gymnastic, Table Tennis, Tug of War, Cycling, Tennis.

Sr. No.	Game Name	Position
1.	Cycling	Winners
2.	Tennis	Winners
3.	Hockey	Winners
4.	Basketball	Winners
5.	Netball	Winners
6.	Volleyball	Runner up
7.	Handball	Winners
8.	Throw ball	Winners
9.	Badminton	Runner up
10.	Athletics	Winners
11.	Cricket	Winners
12.	Table Tennis	Runner up

- Lahore College for Women University has won overall Trophy at Intercollegiate level.
- Lahore College for Women University won overall Winner Trophy in Punjab Olympics 2023.
- Three intercollegiate players of Lahore College for Women University selected in International
- Hockey team tour to Oman 2023.

College Library

Administrative Staff of Central Library

- Dr. Sania Awais, M.A, M. Phil. (Library and Info. Science) (Ph.D.), Librarian
- Ms. Rubina Saleem M.A (Library and Information Science), Incharge
- Ms. Siara Batool, Junior Library Assistant

The Central Library

The main library of the College stocks many valuable books. There are numerous up-to-date magazines and publications as well as national newspapers which are received regularly in the library.

In order to borrow books students are issued a library card. They can borrow these books for 14 days. Books are issued to different classes turn wise on different days of the week. However, reference books, magazines and newspapers cannot be issued or taken out of the library.

The students will be fined if they keep books for more than the fixed days. Roll Numbers for final exams will be issued only if the students bring a clearance slip from the librarian.

Resources of Central Library

Category	No. of Items		Quantity
Books			26011
Journals and Magazines	Local	Subscribed	02
Newspapers	Local	Urdu	01
		English	01
Online Resources	HEC Digital Library		---

Science Section

The College library also has books on pure Science, Pharmacy, Engineering and Technology.

Book Bank

There is a book bank maintained by the Principal's office for the deserving students.

Identity Card

Identity cards are issued to all the students on the commencement of regular classes. They are required to carry their cards with them at all times. If a student fails to produce her card on demand by the teaching staff, she will be fined Rs. 200/- Refusal to show the card can even entail a heavy fine. In case of loss of card, a duplicate will be issued on payment of Rs. 270/-.

College Discipline Committee

College Discipline Committee along with the Principal and Vice-Principal consists of the following members

- Ms. Huma Tauseef Associate Prof. Computer Science
- Dr. Ammara Khan Associate Prof. / Head of English Department
- Dr. Naila Amjad Assistant Prof. Statistics

College Advisory Council

College Council along with the Principal and Vice-Principal consists of the following members:

- Prof. Dr. Safia Anjum Principal
- Prof. Dr. Amina Moazam Butt Head of Psychology Department
- Dr. Saima Batool Assistant Prof. Punjabi

The decision of the Advisory Council pertaining to any matter about the College will be final.

Proctorial Board

To maintain discipline and order in the College, there is a Proctorial Board comprising the Principal, Director Students Affairs and members from the Student Council keep vigilance on the campus. Cases of violation of the following general rules of the College should be reported to the Director Students Affairs who will immediately take proper action.

- Students are expected to observe strict order and discipline in the College, the hostel and the playgrounds.
- Students should not move about or talk in the verandahs and corridors so as to avoid disturbing class-work.
- Students should not enter the Administrative Offices or Staff Rooms without permission.
- Students must be punctual in:
 - a. Attending lectures
 - b. Paying the College and hostel dues
 - c. Returning library books.
- Students are not allowed to leave the College premises during academic hours.
- Students are not allowed to see their visitors or bring them in the College during academic hours.
- Students are not allowed to walk or chatter near the Vice Chancellor's / Principal's Office.
- Students are not allowed to celebrate birthday parties during academic hours.
- Students should read the notice board daily.
- Students should attend College in proper uniform.
- Students are not allowed to wear jewelry (real or artificial).
- Students are not allowed to willfully damage the College property.
- Students are expected to attend the co-curricular activities. They are not allowed to use video cameras during these functions.
- Students are not allowed to bring cameras, tape recorders, mobile phone etc. during academic hours. Defaulters will be punished per college policy.
- Any student who violates the College rules or involves herself in negative activities like strikes, protests or instigates other students for this purpose, or blows crackers will render herself liable for disciplinary action.
- Every staff member has full right to check students for not observing the above-mentioned rules and any report by the staff members will bring punishment to the defaulters.
- On the College premises the Principal's authority is absolute. She has the power to impose fine or some other suitable punishment for a breach of college discipline, rudeness to staff, irregularity and disorderly behavior. A serious violation of these rules will render her liable to be rusticated from the College on the recommendation of the Staff Council. These rules are meant to cultivate refined behavior in the students and to maintain a proper, disciplined environment in the College.
- Students are forbidden to spread by word of mouth or written material, religious sectarian, ethnic, regional or linguistic conflict or hatred.

Medical Facility

Lahore College Health Care Centre is a spacious, well equipped four bed basic health unit working efficiently 24 hours for the physical wellbeing of its students. Lahore College Health Care Centre provides medical facilities to 70-150 students daily.

The Staff at Health center comprise the following:

Morning Total 5, one Medical Officer, one female Nurse, one Junior Clerk / Dispenser, one Attendant female and one male.

Administrative Staff (Medical Facility)

- Dr. Hafsa-Tul-Uzma, Medical Officer (Morning Shift)
- Ms. Shaheen Kalvin, (Female Nurse)
- Ms. Uzma, (Junior Clerk)

Following medical services are provided:

- Medical Consultation
- Dispensing of oral and few inject able medicines
- First Aid Services
- Anti-tetnus vaccination for hostel residents
- Nebulization
- Weight and blood sugar level assessment
- Provision of full medical coverage to the Day Care Centre and students of the Primary Laboratory School at LCWU.
- A fully equipped ambulance with driver is available 24 hours



Transport Facilities

Students are directed to contact the Transport Officer to get their bus cards issued soon after their admission and payment of dues. A Bus Card is issued for two months and renewed after every two months. The cards of defaulters will be cancelled and reissued on the payment of a fine of Rs. 100/- Bus charges are not refundable. Students are expected to display appropriate behavior while using the transport facility.

Student Financial Aid Office

The Student Financial Aid Office is supervised by the Director, University Advancement and Financial Aid.

Mission

Provide financial assistance to deserving students in order to facilitate them to achieve their educational goals. Financial assistance is a joint venture between students and the financial aid office which works on the objective that financial constraints should not be a barrier to quality education.

Administrative Staff

1. Mr. Abdul Ghaffar Ali, Director, University Advancement and Financial Aid
2. Ms. Hina Anwar, Deputy Director Financial Aid
3. Mr. Asghar Ali, Assistant Audit Officer
4. Ms. Samreen Sadaf, Assistant
5. Mr. Omar Jamil Khan, Assistant
6. Mr. Umer Shahzad, Junior Clerk
7. Mr. Amir Hussain, Lecture Assistant

Details of Scholarships for Intermediate Students

LCWU SCHOLARSHIPS (F.A / F.Sc.) – Part-I

- Students whose father/guardian's income is equal or less than Rs. 40,000/- are eligible for applying for LCWU Scholarships.
- Scholarship forms are also available on the website of LCWU i.e. www.lcwu.edu.pk

LCWU SCHOLARSHIPS (Hard-ship cases) (F.A / F.Sc.) – Part-I

- Students whose father/guardian's income is equal or less than Rs. 40,000/- are eligible for applying for LCWU Scholarships.
- Any student with financial constraints is eligible for this scholarship during year.
- Scholarship forms are also available on the website of LCWU i.e. www.lcwu.edu.pk

Punjab Education Endowment Fund (PEEF) SCHOLARSHIP (INTERMEDIATE)

- Applicants should be freshly enrolled students of LCWU for the current year.
- Students must have secured at least 60% marks in Examination held in 2023 (Annual) from B.I.S.E, Lahore.
- Students should have passed the above-mentioned examination as a regular student.
- Only students whose monthly family income is equal or less than Rs 15,000/- can apply.
- Students having Punjab domicile can apply.
- Students must not have received any other scholarship.

LAHORE BOARD SCHOLARSHIP F.A. / F.Sc. Part-I and Part-II

- It's a merit-based scholarship program for F.Sc. /F.A./ I.C.S/Commerce Students.
- Students whose marks are more than 900 can apply.
- Students can apply through LCWU Student Financial Aid Office.

PAKISTAN BAIT-UL-MAL SCHOLARSHIP

- It's a need-based scholarship program for Intermediate students.
- Students must have overall grade "B" or at least 60% marks in previous degree.
- Self-finance / Self-sufficient students and dependent of Govt. employees are not eligible for this scholarship.

MORA SCHOLARSHIP

- It's a need-based scholarship program for brilliant and deserving students of Intermediate.
- Student should be fresh enrolled student of LCWU.
- Only students whose monthly family income is equal to or less than Rs. 15,000/- can apply.
- Student can apply through LCWU Student Financial Aid Office.
- Students having Punjab domicile can apply.
- Student has not received any other scholarship for her studies.
- Students must have secured at least 60% marks in Examination held in 2023 (Annual) from Punjab.
- Students can apply through LCWU Student Financial Aid Office.

HIJRI SCHOLARSHIP

The following can apply:

- Student whose parents are Government teachers.
- Disable Students
- The students who have passed the matriculation examination as a regular student in year 2023.
- Students who received any other scholarship are not eligible for Hijri Scholarships.

Rehmat-ul-lil Alamin Scholarship (Merit Bases)

The following can apply:

- Candidate must be the highest scorer from their respective district as selected by the Higher Education Department in light of the results issued by the Intermediate and Secondary Education Board.
- The score of the applicant is verified from the data provided by the Boards in Punjab through HEP.
- For the students who get admission in public sector institute out of their own district, their merit will be determined on the basis of the district of domicile.

Note: The merit of the candidacy to be decided on the basis of their district / place of residence, not the place or district where they are admitted.

How to apply for the Rehmat-ul-lil Alamin Scholarship

- Online applications will be received for the Rehmat-ul-lil Alamin scholarship. In order to apply online for the scholarship please visit website of Higher Education Department of the Government of Punjab or visit <https://hed-scholarships.punjab.gov.pk/signup>

Directorate of Faculty Development and Internationalization

MISSION AND VISION

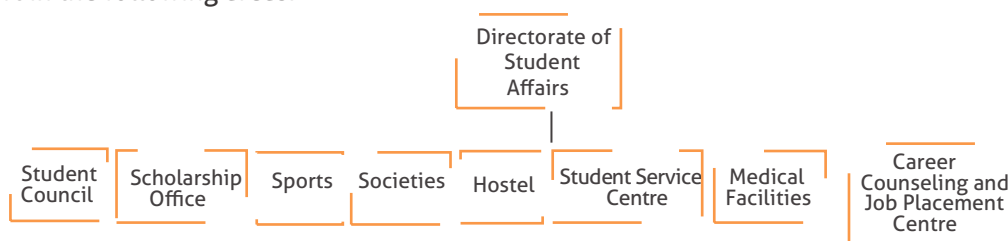
Enhancing Innovation through pedagogical and organizational development, international knowledge transfer, support to research and development and positive stake holder engagement. Developing Enterprise through professional, personal and behavioral skill development among the faculty and staff.

INTERNATIONAL RESOURCE CENTRE (IRC)

LCWU, with support of the British Council has trained faculty members from across the University in various areas of internationalization to help LCWU set up an International Resource Centre (IRC) in the University. IRC is the central coordinating and guiding point for all foreign Scholarships and External Linkages / Collaborations / MoU's with leading International higher education institutions and professional bodies.

Directorate of Student Affairs

The Directorate of Student Affairs establishes a link between the University administration and the students. It facilitates students in addressing their problems related to academics, co-curricular activities, sports, libraries, examinations, transportation, health, fee, career, planning and discipline etc. The goal of the Student Affairs office is to ensure the welfare and growth of students with respect to every aspect of their university life and to ensure provision of maximum support in the following areas:



The primary purpose of the Directorate is to facilitate students in every possible way under one umbrella and to help them develop balanced personalities; to instill moral values, integrity, civic sense and tolerance leading to a broader vision of life.

The Student Affairs office plays an active role in encouraging students to report their problems regarding university affairs and in striving to resolve these problems through the concerned departments. The students can visit the office in person or send a written complaint through e-mail or ordinary mail.

RUTH PFAU WOMEN INSTITUTE FOR LEADERSHIP AND LEARNING

Student Service Centre

Administration:

- Ms. Mamoona Riaz M.S. (LCWU), M.Sc. (PU), Material Developer/Psychologist
- Ms. Samina Uzair M.S. (PU), B.Sc. (Hons.) (KC), Student Counselor / Clinical Psychologist
- Ms. Tabinda Jalil M.S. , M.Sc. (LCWU), Student Counselor/Psychologist

Student Service Centre, located in Women Institute for Leadership and Learning provides a number of student friendly services. The Student Service Centre of LCWU was established in 2003 with a holistic approach to enhance the Physical, Psychological, and social well-being of the students. The Centre has the following components:

- Career Guidance and Counseling Centre
- Student Gymnasium
- Seminar Hall

Career Guidance and Counselling Centre

The Counselling Centre of Students Service Centre provides career guidance as well as psychological counselling along with personal growth and development services. Clinical and counseling psychologists are available to assist the staff and students in understanding and resolving their psychological problems. The Centre is also offering psychological assessment services including aptitude, intelligence and personality assessment.

Personal Counseling

The personal counselling and guidance services are available for students and faculty. The following issues can be discussed for personal growth and skill enhancement:

- Familial issues and relationship problems
- Conflict with peers and friends
- Adjustment problem with roommates in hostels
- Career selection
- Stress management
- Time management
- Lack of assertiveness
- Lack of confidence
- Problems in English language
- Concentration problem
- Anger management

Career / Vocational Guidance

Different psychological tests are used for gaining insight into one's interests, abilities and skills.

Students are informed about educational programs, professional career plans, and employment and job opportunities.

Students are guided about ways of accessing information about work opportunities in various career fields.

Students are helped in career planning and in conflict resolution with reference to the choice of professional programs or career paths.

Health Education Services

Student Service Centre (SSC) regularly organizes health education activities in collaboration with various organizations including Fatima Memorial Hospital, Shaukat Khanam Cancer Hospital and Pink Ribbon Pakistan, and other similar organizations.

Harassment Complaint Cell (HCC)

Lahore College for Women University has established Harassment Complaint Cell in accordance with the guidelines of HEC and also keeping in view the Women Empowerment Package 2012. LCWU is a place where administrators, faculty, employee/staff and students (all levels/categories) work and learn in an environment, free from intimidating, offensive and hostile behaviors. The information and awareness lectures about Harassment Complaint Cell are a regular activity of the HCC.

The students of different faculties of university are guided about the nature of harassment, the process of launching complaint, inquiry process and possible punishment. The information regarding HCC is also displayed on different university notice boards.

Student Gymnasium

The gymnasium is equipped with up-to-date workout facilities and can cater for the needs of 50-60 students at a time. Regular aerobics classes are run by a trained aerobics instructor. The gymnasium instructor is available throughout the week to assist the students and faculty. The facility is open in the evenings as well. For admission and further information, the gym instructor may be contacted on telephone extension No. 258.

Centre for Career Counseling and Job Placement

Overview of the Department

The Centre for Career Counseling and Job Placement (CCJP) has started operation in October 2011. Since then, the Centre is providing counseling to students to select suitable careers. CCJP is assisting students in job placements and skill development. Furthermore, the Centre is preparing students for career success and their role as future leaders by:

- Helping students start their career planning and preparation at an early stage through career and student development programs.
- Soliciting more internship opportunities and further expand the employment network for graduates.
- Effectively improving students in behavior and skills necessary to seek and qualify for job.
- Inviting government officers, judges, women entrepreneurs and members of Federal, Provincial and Public Services for interaction with students.
- Conducting workshop and seminars to encourage students toward public and private employment.
- Training session for skill enhancement and capacity building of the students
- Guiding students choose further higher education in Pakistan or abroad in their study area with the help of Higher Education Commission (HEC).
- Acting as medium of communication amongst students, industries and professional bodies to promote career opportunities for students.

Community Service (Independent Living Centre)

The LCWU Disabled Students Support Committee has established an Independent Living Centre in 2012 under the supervision of Prof. Shireen Asad (Rtd.), Ms. Parveen Riaz (Rtd.) and Dr. Atiq-ur-Rehman for the physically and visually challenged students. Its main objectives are to facilitate physically and visually challenged students.

Administrative Staff:

- Prof. Dr. M. Atiq ur Rahman, Convener (Chairperson, Department of City and Regional Planning)
- Dr. Asma Seemi Malik, Chairperson, Department of Sociology
- Ms. Sadia Iqbal, (Admin Assistant)
- Ms. Shireen Tabasum, (Attendant)

Facilities and Services Provided by Independent Living Centre

1. Provision of Medical Facilities
2. Provision of Scholarships
3. Career counselling and job placement under specified quota
4. Provision of pick and drop services
5. Provision of audio-visual aid for partially blind students
6. Provision of electric wheelchair
7. Provision of manual wheelchair
8. Provision of lady attendant for care and mobility in the campus
9. Provision of Brail language assistance
10. Provision of Perkin machines
11. Provision of Translator
12. Computer Lab
13. Scanner and Printer
14. Braille books for students
15. Recorded books
16. Provision of writers for assistance and examinations

Residential Facility

The College offers the facility of hostels to the students coming from other cities and abroad. There are four hostels for Intermediate, Graduate, Post-Graduate and Ph.D. students.

Due to limited accommodation facilities, the students are offered seats on merit only.



Hostel Administrative Staff

- Prof. Dr. Farzana Rashid, Chief Warden
- Ms. Rubina Akhter, Warden (Habiba Hall)
- Ms. Asmat Tahir, Warden (Jaffery Hall)
- Ms. Nadia Rauf, Warden (New Hall)
- Ms. Maria Iqbal, Assistant Warden (Jaffery Hall)
- Ms. Rabia Faiz, Assistant Warden (New Hall)
- Ms. Syeda Munira Yaqboob, Assistant Warden (Habiba Hall)
- Dr. Safoora Riaz, Manager (Manager)

Hostel Rules & Fee Structure

Introduction:

The Lahore College for Women University offers hostel facility to the students coming from other cities and abroad excluding the local students. There are separate hostels in Lahore College for Women University, Lahore, for Intermediate, Graduate and Postgraduate Students.

Allotment:

- Students are required to apply for hostel accommodation on prescribed hostel form.
- Hostel accommodation will be allotted by Chief Warden. Due to limited accommodation facilities, the hostel seats will be provided to the students only on merit and all other applications will be put on waiting list.
- The seats of quota are reserved as per Government Policy.
- Hostel admission is offered for one academic year only, extension for another year is based upon good conduct and academic performance.

The hostel accommodation facility is not available for MS/MPhil, MA/MSc (Evening) and diploma / certificate program. Residents who have been expelled from the hostel will not be eligible for re-admission. Additional rules and regulations issued from time to time must be fully observed as well.

Hostel Charges (Subject to change from time to time)

- Hostel Supervisory Committee is authorized to give hostel fee concessions/waivers to deserving students.
- Hostel Supervisory Committee is authorized to increase/change/amend hostel charges due to cost of living/revision of pay scales or other administrative compulsions.
- Hostel Supervisory Committee is authorized to waive off Hostel charges in case of unusual circumstances for which students are not responsible
- Hostel Charges will be increased by 5 % every year.
- The hostel Charges (Utility Bills, Janitorial Services, and Maintenance) shall be received, quarterly.
- Mess Charges and Generator Charges shall be received, monthly.
- Room cooler charges at the rate of Rs.840/-per month will be charged in April at the beginning of summer season, for a period of 6 months.
- Boarders will have to submit their quarterly charges till 15th of the first month of each quarter. They will pay a fine of Rs. 50/- per day for payment after due date. If a boarder fails to deposit the monthly charges till 5th of the next month, she may be denied hostel facility.
- Mess facility will be suspended due to non-payment of mess charges, with a warning issued by Hostel Warden.
- Membership of the hostel mess is compulsory for every resident.
- No concession is offered to students in the hostel annual dues.
- In case of seven days consecutive leave from the hostel with application, boarders can have the concession of one-week deduction in their mess dues.
- All dues deposited by boarders including the security shall be forfeited if she is expelled on disciplinary grounds.
- Hostel charges shall be determined and fixed as deemed necessary by the University from time to time.



- the security register after receiving original ID cards from the visitors which will remain in his custody until the visitor leaves.
- In case of any emergency, one of the family members, mentioned in the hostel visiting list of the student, has to come to take the student home.

GATE PASSES

- Gate passes are issued to all the boarders by the respective Warden/Assistant Wardens, on Friday and Saturday, to go home on weekends.
- Self-pass will be issued to the boarders by the Warden / Assistant Wardens after written permission of the parents/guardian. Self-pass will be issued to:
 - a. The Graduates and Postgraduates boarders for their Research work, Project, Field Work and Internship on the recommendation of the research supervisor and Chairperson of the Department.
 - b. The boarders for shopping only once a week on Saturday.
- Self-pass is not allowed to the Intermediate boarders.
- Hostel gates will be closed as per notified timings.
- Violators of the above rules would be liable to strict disciplinary action by the Hostel / University Authorities, which may lead to expulsion from the Hostel/University.

DURATION OF STUDENTS STAY IN HOSTEL

- All the students who are granted admission in the hostel, their stay in the hostel will be for the duration of their on-campus studies as mentioned in Academic Regulations.
- Hostel facility will be provided to the Ph.D. students initially for a period of 3 years which can be extended up to 5 years on the recommendations of the Departmental Doctoral Committee.
- Every student should stay in the accommodation allotted to her by the concerned authority. She will not be allowed to change accommodation once allotted unless approved by the Chief Warden.
- If there are surplus or vacant seats available, students of MS and PhD applying for shorter duration can be accommodated and permission shall be granted by Chief Warden, on case-to-case basis, with charges.
- If the outgoing classes (Intermediate Part II, BS 8th Semester, MS/MPhil 4th Semester & Ph.D.) vacate the hostel after completing their academic session and come again for practical, viva or thesis work. They will be charged Rs: 200/- per day (excluding mess and other charges) and if they stay for more than 14 days dues will be charged according to existed rates.

PUNISHMENT

- In case of any hostel rule violation, hostel warden will give written warning to the boarder however, in case of serious violation of rules, the parents will be informed in writing.
- Any student who will violate the hostel rules and is found involved in any negative activity like strike or instigating other boarders for this purpose, will be liable to disciplinary punishment.
- The case will be forwarded to the Hostel Student Affair Committee on recommendations of Chief Warden for further appropriate action. The student may be expelled from the hostel after three warnings and will not be allowed for re-admission.
- If a boarder extends her leave/stay at home, the parents will immediately inform the concerned hostel warden for such extension. If a boarder extends her leave/stay without informing the hostel authorities, the concerned hostel warden will intimate the parents immediately, if no information/response is received from the parents or boarder the case may be referred to Hostel Student Affair Committee and the Committee will give decision as per nature of case.
- In case the boarder is struck off from the hostel and later on is allowed for re-admission, re-admission charges amounting to Rs. 5000/- will be charged.

INSPECTIONS

1. The University or Hostel Administration can inspect anytime, the hostel premises, boarders' rooms, almirah's, bags etc. without any advance notice.

HOSTEL ENVIRONMENT

- Every boarder is expected to maintain peace, tranquility, calm atmosphere and discipline in hostel and respect the rights of others.
- Boarders are not allowed to take their breakfast, lunch and dinner in their rooms.
- Boarders will take care of cleanliness of the hostel.
- No one is allowed to misbehave with the administration and employees of the hostel in any situation. Violation may cause expulsion from the hostel.
- Boarders must not disturb or cause inconvenience to other boarders and should ensure peace.
- Smoking, drinking, use of liquor/drugs and keeping of weapons (licensed and unlicensed) is strictly prohibited in the hostel and entails expulsion.
- Boarders should not keep costly items and excessive cash with them. Hostel administration will not be responsible for any loss.
- No political and religiously extremist activity or propagation is allowed in the hostel.

HOSTEL PROPERTY

- Boarders are not allowed to damage the hostel property. Any student found guilty will be liable to pay the damage in addition to fine.
- Hostel administration can impose a penalty, in case she fails to keep her room clean and tidy. Moreover, if there is any complaint against room servant, it is the responsibility of a boarder to inform the hostel administration.

CLEARANCE CERTIFICATE:

- Certificate of clearance duly signed by the boarder and their father/mother/guardian is required to be submitted to the concerned Hostel Warden at the time of leaving the hostel.

HOSTEL FUND MANAGEMENT

- Hostel funds will be generated from Hostel admission fee collected from boarders. Hostel expenditures will be met from the budget of each hostel.
- Petty cash for hostel will be maintained as per Financial Rules of hostels, to meet the routine hostel expenses.
- Audit will be conducted as per prescribed procedure mentioned in Financial Rules of hostel.

UTILIZATION OF HOSTEL FUNDS

- Concerned warden of respective hostel will be included in the Hostel's Supervisory Committee.
- Procurement process, of all hostel related items, shall be carried out by Hostel's Supervisory Committee
- The concerned Hostel Warden shall initiate the process of payment on account of hostel expenditures. The Hostel Warden shall ensure the completion of requisite codal / legal formalities of the bills / claims before forwarding to the Hostel's Supervisory Committee for approval.
- Administrative and Financial approval limit for Hostel's Supervisory Committee will be Rs.100,000/- only. Over and above Rs.100,001/- will be approved by the Vice Chancellor.
- The cheque's of hostel accounts will be signed by the cheque's signatories of the University accounts.
- Hostel accounts shall be maintained in the prescribed manner by the office of concerned Hostel Warden.
- Hostel receipts are not part of university funds, therefore, there is no need of pre-audit by the Resident Auditor. However, mandatory annual audit shall be conducted by the University Resident Auditor with the approval of the Vice Chancellor.
- The maintenance and repair of hostels shall be carried out by Engineering Cell of the University as per procedure applicable for University M & R.
- The Warden of the concerned hostel will reconcile the account with bank(s) and submit a monthly report of receipt and expenditure to the Hostel Supervisory Committee for its signatures, by the 19th of following month.
- On the recommendations of Hostel Supervisory Committee, the Investment Committee of the University shall invest surplus balance of the hostel funds.
- On account of investment of the funds of hostels, record of contribution of each hostel investment, shall also be maintained.
- The payment of bills and transfer of funds from one hostel account to another hostel account shall not be made. However, in special circumstances, on the recommendations of Hostel Supervisory Committee, Vice Chancellor will allow such payments/transfers from one hostel account to another hostel account.
- All hostel dues shall be deposited directly in the designated schedule Bank through bank challan's no payment will be received in cash.
- Grant of honorarium and increase in salary of the hostel administration/ stall shall be fixed by the University

- Authorities on the recommendations of Hostel Supervisory Committee.
- The canons of financial propriety shall be observed while incurring expenditure of hostel funds. The purchase / procurement of goods and services must be need based. Mere availability of budget should not be the basis of incurring expenditure.
- All vouchers in support of items of expenditures shall be retained for a period of five years. Vouchers more than five years old may, at the discretion of Hostel Supervisory Committee and Treasurer, be destroyed except the record relating to pending Enquiries, Court cases of Audit Paras till their final settlement.
- Subject to amendment in the relevant clause(s), all provisions of already approved SOPs shall remain in force.

Note: In addition, rules and regulations issued from time to time will also be applicable.

Other Dues

- The College fees, hostel fee, funds and other dues must be paid on the dates notified by the College in the National Bank of Pakistan, Jail Road Branch and Bank of Punjab, Shadman Market Branch. However, challan form will be issued by the College office only. In case the students fail to pay their dues within the due date, their seats will be cancelled.
 - a. To facilitate the students, booth of NBP and BOP are established in the College premises where only students can deposit the dues / fees.
 - b. If parents wish to deposit the dues, they may contact National Bank, Jail Road, branch after getting the challan form from the College office.
 - c. Male members are not allowed to deposit the dues at the College booth.
 - d. The total fee of one year will be paid in every academic year and the names of the students failing to pay the dues on dates notified will be struck off from the college rolls.
 - e. After payment of dues at the time of new admission, the students must contact the staff on duty for the issuance of Roll No. and section otherwise her admission will be considered cancelled.
- After payment of dues at the time of new admission, if a student pays her dues and leaves the College for whatsoever reason, she will get back the library security only (Rs. 1190/- one thousand one hundred and ninety only) as per rules of the college.

Transcript Fee

Present students or ex-students desirous to take admission in any Foreign Educational Institution are required to pay Rs. 1000/ - per copy and then get the Transcript prepared by the Principal's Office.

**F.A. / F.Sc. Fee Structure for the year 2023-2024
(WITHOUT PRACTICAL FEE)**

Sr. No.	Item	Amount
1.	Admission Fee	2,745
2.	Tuition Fee	16,710
3.	I.D. Card	365
4.	General Fund	7,945
5.	Medical Fund	906
6.	Magazine Fund	765
7.	Board Registration + Exam Fee as prescribed by BISE Lahore	3,450
8.	Department Development Fund	4,026
9.	College Examination Fee	2,955
10.	Transport Fee	600
11.	Library Security (Refundable)	1,190
12.	Sports and Fitness Fund	743
Total Rs.		42,400

Note:

- Fee for intermediate level is not refundable in any case
- Total Fee (Part-I) without Practical Rs. 42,400/-
- Practical fee will be charged Rs. 3820/- per subject, per annum for practical subjects only.
- Library Security will be refunded within Six months of closing of academic session.

**F.A. / F.Sc. Fee Structure for the year 2023-2024
SELF-SUPPORTING PROGRAM**

Sr. No.	Subject	Amount
1.	Pre-Engineering	82,390
2.	Pre-Medical	82,390
3.	ICS Physics	58,850
4.	ICS Economics	58,850
5.	ICS Statistics	58,850
6.	I.COM	58,850
7.	Arts	58,850

Note:

- This fees is lump sum including all Practical and Non-Practical subjects.
- Fee for Intermediate level is not refundable in any case.

TREASURER

Lahore College for Women University, Lahore.

LAST YEAR'S RESULT

Total	Appeared	Fail	Passed	Grade						Pass %
				A+	A	B	C	D	E	
76	76	04	72	40	12	11	7	2	--	95%

Pre-Medical Group (Session 2020-2022)

Total	Appeared	Fail	Passed	Grade						Pass %
				A+	A	B	C	D	E	
407	407	01	406	306	55	29	8	8	--	99%

ICS Physics Group (Session 2020-2022)

Total	Appeared	Fail	Passed	Grade						Pass %
				A+	A	B	C	D	E	
84	84	05	79	36	25	13	5	01	--	94%

ICS Economics Group (Session 2020-2022)

Total	Appeared	Fail	Passed	Grade						Pass %
				A+	A	B	C	D	E	
90	90	20	70	02	13	29	18	05	--	78%

ICS Statistics Group (Session 2020-2022)

Total	Appeared	Fail	Passed	Grade						Pass %
				A+	A	B	C	D	E	
49	49	03	46	12	17	11	5	1	--	94%

General Science Group (Session 2020-2022)

Total	Appeared	Fail	Passed	Grade						Pass %
				A+	A	B	C	D	E	
38	38	10	28	01	01	09	10	07	--	74%

Commerce Group (Session 2020-2022)

Total	Appeared	Fail	Passed	Grade						Pass %
				A+	A	B	C	D	E	
45	45	--	45	06	18	11	09	01	--	100%

Home Economics Group (Session 2020-2022)

Total	Appeared	Fail	Passed	Grade						Pass %
				A+	A	B	C	D	E	
37	37	--	37	07	16	11	03	--	--	100%

Humanities Group (Session 2020-2022)

Total	Appeared	Fail	Passed	Grade						Pass %
				A+	A	B	C	D	E	
496	496	17	479	21	105	151	138	47	17	96%

LAST YEAR'S MERIT

F.Sc.		ICS			I.Com	General Science	Arts	H.Eco.
P. Med.	P. Eng.	Physics	Economics	Statistics				
1025	1000	1000	850	900	750	701	700	702



Lahore College For Women University, Lahore

Phone: +92-42-99203801-9 | Fax: +92+42+99203077 | Website: www.lcwu.edu.pk

