



SDG-17: Partnership for the Goals

“Sustainable development is the pathway to the future we want for all”

PROGRESS REPORT FOR SUSTAINABLE DEVELOPMENT GOALS (SDGs) 2023

LAHORE COLLEGE FOR WOMEN UNIVERSITY

Compiled and edited by:

Prof. Dr. Humaira Majeed Khan

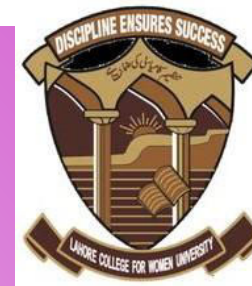
Dean, Faculty of Pharmaceutical & Allied Health
Science, LCWU

Dr. Samia Nasreen,

Associate Professor, Department of Economics, LCWU

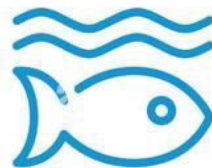
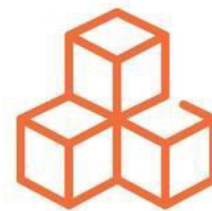
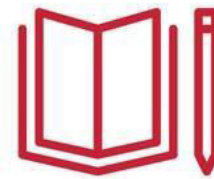
Annam Tariq,

Quality Assurance Manager, Quality Enhancement Cell,
LCWU



SUSTAINABLE DEVELOPMENT GOALS

17 GOALS TO TRANSFORM OUR WORLD



INTRODUCTION

The Sustainable Development Goals (SDGs), launched by the United Nations in 2015, address critical issues like poverty, inequality, climate change, and peace. Pakistan adopted the SDGs in 2016, becoming one of the first nations to legislate this agenda, establishing an SDG Secretariat in its National Assembly. Following the 18th Constitutional Amendment, Pakistan has prioritized localizing the SDGs to tackle unique socio-economic challenges, coordinating efforts through consultations with national and provincial stakeholders to tailor the goals to local needs.

Aligned with Pakistan's national agenda, Lahore College for Women University (LCWU) has embraced the vision of fostering sustainable development and empowering women to play a leading role in achieving the SDGs. Through its commitment to quality education, gender equality, and innovation, LCWU actively contributes to the SDGs by equipping women with the skills and knowledge to drive social and economic change. The university aims to create a supportive and inclusive academic environment that promotes research and partnerships focused on sustainable development, thereby addressing both local and global challenges.

With Vision-2025, Pakistan has created a comprehensive roadmap that aligns closely with the SDGs, focusing on sustainable development, poverty alleviation, and economic growth. This alignment reflects Pakistan's commitment to building a more resilient and inclusive society while addressing global goals tailored to its local context. LCWU supports this vision by preparing women leaders who are dedicated to advancing sustainable solutions, promoting gender equity, and contributing meaningfully to Pakistan's progress toward a sustainable, equitable, and prosperous future by 2030.



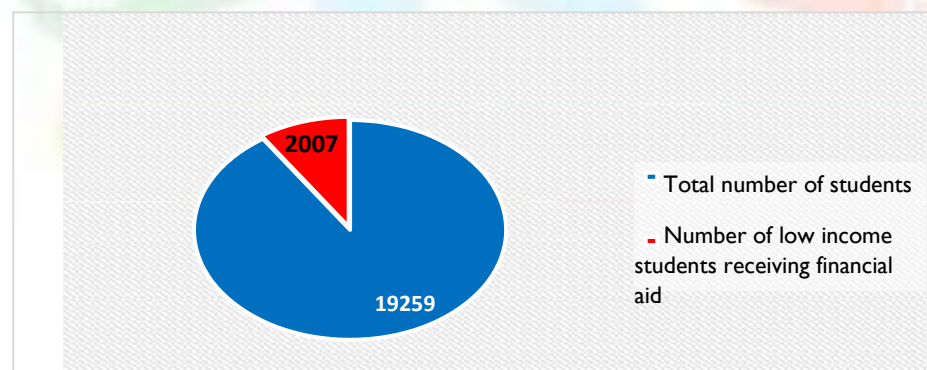


SDG-1 NO POVERTY

“End poverty in all its forms everywhere” (UN, 2015)

Proportion of Students Receiving Financial Aid to Attend University Because of Poverty

Proportion of students receiving financial aid to attend university because of poverty the proportion of students receiving financial aid at LCWU due to poverty reflects the university’s commitment to addressing financial barriers to education. The total enrollment of university is 19,259 and of these, 2,007 are specifically identified as low-income students who rely on financial assistance to pursue their education.



Proportion of Students Receiving Financial Aid

SDG-1: Poverty Indicator (1.2)

Available at:

<https://docs.google.com/document/d/15Ho0wzmfyK3JPwtbqdTA1S8iutcvkViC/edit>

University Anti-Poverty Programs

LCWU sets specific targets to admit students from households within the bottom 20% of the income distribution in the country. To support these students, LCWU provides financial assistance in the form of scholarships, hostel fees, and food concessions, ensuring that economic barriers do not hinder their educational progress. In addition to admitting low-income students, the university also focuses on ensuring their success by establishing graduation and completion targets.



USAID-funded Merit and Needs Based Scholarship Program

50% Scholarships are reserved for Female Students only

Undergraduate Scholarship Funding of Two Semesters for Flood 2022 Affected Students

RECENT FLOODS IN PUNJAB HAVE CAUSED UNPRECEDENTED DAMAGE TO THE INFRASTRUCTURE AND LIVELIHOODS OF MILLIONS. COORDINATION OF HIGHER EDUCATION FOR THE STUDENTS OF universities who have been in flood-affected areas is an urgent task and due to non-availability of financial resources, USAID-funded Merit and Needs Based Scholarship Program provides scholarship to students from flood-affected areas in Punjab, since 2022. The Program will provide scholarship funding for two semesters. As per the annual allocation of funds, scholarship is for merit and needs based.

Eligibility

1. The student must be a citizen of Pakistan.
2. The student must be a resident of Punjab.
3. The student must be a graduate of a recognized university in Punjab.
4. The student must be a female student.
5. The student must be a resident of a flood-affected area in Punjab.
6. The student must be a resident of a flood-affected area in Punjab.
7. The student must be a resident of a flood-affected area in Punjab.
8. The student must be a resident of a flood-affected area in Punjab.
9. The student must be a resident of a flood-affected area in Punjab.
10. The student must be a resident of a flood-affected area in Punjab.

Scholarship Coverage

The scholarship will cover the tuition fees, hostel fees, and food concessions for two semesters. The scholarship will be awarded to students who are eligible for the scholarship.

How to apply?

Students who are eligible for the scholarship should apply to the Vice-Chancellor of the university. The application should be submitted by the deadline date.

Note:

- 1. The scholarship is for merit and needs based.
- 2. The scholarship is for merit and needs based.
- 3. The scholarship is for merit and needs based.
- 4. The scholarship is for merit and needs based.
- 5. The scholarship is for merit and needs based.
- 6. The scholarship is for merit and needs based.
- 7. The scholarship is for merit and needs based.
- 8. The scholarship is for merit and needs based.
- 9. The scholarship is for merit and needs based.
- 10. The scholarship is for merit and needs based.

Partner Universities / Institutions

The following universities/institutions are eligible for the scholarship:

Sl. No.	University Name	Location
1	Government College University	Faisalabad
2	Government College University	Faisalabad
3	Government College University	Faisalabad
4	Government College University	Faisalabad
5	Government College University	Faisalabad
6	Government College University	Faisalabad
7	Government College University	Faisalabad
8	Government College University	Faisalabad
9	Government College University	Faisalabad
10	Government College University	Faisalabad
11	Government College University	Faisalabad
12	Government College University	Faisalabad
13	Government College University	Faisalabad
14	Government College University	Faisalabad
15	Government College University	Faisalabad
16	Government College University	Faisalabad
17	Government College University	Faisalabad
18	Government College University	Faisalabad
19	Government College University	Faisalabad
20	Government College University	Faisalabad
21	Government College University	Faisalabad
22	Government College University	Faisalabad
23	Government College University	Faisalabad
24	Government College University	Faisalabad
25	Government College University	Faisalabad
26	Government College University	Faisalabad
27	Government College University	Faisalabad
28	Government College University	Faisalabad
29	Government College University	Faisalabad
30	Government College University	Faisalabad
31	Government College University	Faisalabad
32	Government College University	Faisalabad
33	Government College University	Faisalabad
34	Government College University	Faisalabad
35	Government College University	Faisalabad
36	Government College University	Faisalabad
37	Government College University	Faisalabad
38	Government College University	Faisalabad
39	Government College University	Faisalabad
40	Government College University	Faisalabad
41	Government College University	Faisalabad
42	Government College University	Faisalabad
43	Government College University	Faisalabad
44	Government College University	Faisalabad
45	Government College University	Faisalabad
46	Government College University	Faisalabad
47	Government College University	Faisalabad
48	Government College University	Faisalabad
49	Government College University	Faisalabad
50	Government College University	Faisalabad

Contact Information:

USAID-funded Merit and Needs Based Scholarship Program
 Phone: 035-9600055 | 035-9600256
 Email: usaidscholarship@lcwu.edu.pk
 Website: www.lcwu.edu.pk/news-2023/june-3/3536-usaid-funded-merit-and-needs-based-scholarship.html
 Facebook: [usaidscholarship](https://www.facebook.com/usaidscholarship)



USAID-funded Merit and Needs Based Scholarship

SGD-1: Poverty Indicator (1.3)

Available at: Lcwu.edu.pk/news-archive-2023/june-3/3536-usaid-funded-merit-and-needs-based-scholarship.html

The Naseem Kousar Scholarship Disbursement Ceremony

SGD-1 Poverty Indicator (1.3)

Available at: <https://www.lcwu.edu.pk/news-aug2020/3410-master-level-educational-scholarships-for-students-peef.html>

Community Anti-Poverty Programs

LCWU actively supports local start-ups by providing mentorship, training workshops, and access to university facilities, empowering entrepreneurs to establish financially and socially sustainable businesses. To ensure these ventures succeed and contribute to the community's economic growth, the university also offers financial assistance. Moreover, LCWU is developing a comprehensive policy framework aimed at addressing poverty on a broader scale, aligning its efforts with both local and global initiatives.



1-Day Pre-Incubation Training

SDG-1: Poverty Indicator (1.4)

Available at

<https://www.lcwu.edu.pk/component/content/category/222-k-bic.html?Itemid=56>



Robotics Expert & an Italian Entrepreneur Visit

SDG-1: Poverty Indicator (1.4)

Available at <https://www.lcwu.edu.pk/component/content/category/222-k-bic.html?Itemid=563>



Publications

10

MOUs

02

Research Based Projects
(Non-funded)

01



SDG-2 ZERO HUNGER

“Ensure healthy lives and promote well-being for all at all age” (UN, 2015)

Campus Food Waste

At Lahore College for Women University (LCWU), approximately 1.5 tons of food waste is generated daily. However, proactive measures are in place to reduce this amount by donating surplus food from campus cafés and hostels to university staff. Ideally, all forms of food disposal would be meticulously tracked, with contracts for outsourced food vendors requiring accurate measurement and reporting of waste. LCWU is also enhancing its waste documentation processes in line with WHO guidelines on food waste management. Additionally, the university has implemented strict practices to address common causes of waste, such as over-purchasing and large portion sizes, leading to a significant reduction in food waste across campus.

Student Hunger

Lahore College for Women University (LCWU) has implemented a program to support food security, especially for low-income students, by providing affordable, nutritious meals reviewed by Home Economics Department nutritionists. Food and Nutrition students are trained in portion control and sustainable meal planning, reducing waste and addressing hunger on campus. The campus café and hostel menus offer diverse, healthy options, accommodating all dietary preferences. Food and nutrition labs also provide hands-on experience in preparing balanced meals tailored to individual health needs, promoting sustainable eating practices across LCWU.




Kitchen Waste Compost

SDG-2: Campus Food Waste (2.2)

Available at:

<https://www.facebook.com/photo/?fbid=327851336672352&set=a.132014536256034>

<div>  <div> Dean's Café LCWU </div> </div>			
Most Popular Non Vegetarian Specialties			
Chicken Shawerma 70 gms	250	Shami burger	150
Zinger burger 100gms	350	Chicken roll	100
Zinger paratha roll 120gm	300	Pizza slice fresh (L)	200
Chicken sandwich 120gm	225	Pizza slice fresh (M)	150
Shami kabab	60	Dahli bhatty plate	175
Chicken patties	60	Chicken biryani	200
Soup hot and sour / corn	275		
Students' Favorite-- Non Vegetarian Selection			
Chicken noodles	150	Chicken cheese naan	300
Chicken samosa	50	kabab paratha	250
Paratha roll 80 gm	200	Chicken burger	275
Tikka paratha 80 gm	300	100gm Donut	200
Chicken qeema naan	250	Chicken cheese samosa	50
Nuggets 5pcs	150	Vegetable chicken roll	50
Vegan Snacks & Juices			
Aloo naan	120	Pina colada	100
Aloo samosa	70	All brand juices	market rates
Channa chaat	175	Slush	70
Got guppy	200	Potato strips	150
Vegetable samosa	50	Pathory channy 2 pcs	200
Pathory channy 2 pcs	200	Mint margrita	120
Caesar Salad	200		

Dean's Café LCWU

SDG-2: Zero Hunger Indicator (2.3)

Available at: <https://lcwu.edu.pk/images/2023/LCWUDeanMenu.jpg>

Proportion of Graduates in Agriculture and Aquaculture Including Sustainability Aspects

Students across various departments at the university are engaged in food sustainability courses. In the BS Home Economics (Food & Nutrition) program, 60 students are enrolled in Fundamentals of Food and Nutrition, and 34 students in Community Nutrition. Additionally, in 2022, Zoology students studying aquaculture-related courses include 9 BS, 12 MSc, and 12 MS students.

<div>  <div>LCWU HOSTEL MENU</div> </div>		
BREAKFAST COMBOS MENU	LUNCH COMBOS MENU	DINNER COMBOS MENU
NON-VEGETARIAN BREAD-OMELET-MILKPAK BREAD-EGG-MILKPAK VEGETARIAN BREAD-JAM-MILKPAK NAAN CHANAY-HALWA PURI VEGAN BREAD-JAM NAAN CHANAY	NON-VEGETARIAN HALEEM(FRIED ONION/ LEMON GINGER) VEGETARIAN AALO KI BHUJIA+RAITA KARI PAKORA+TORI DAAL MAASH+RAITA KARAILAY PYAZ+DAHI KALI CHANNY/DAAL CHANAY+DAHI PHULKIAN AALO KA PARATHAY+RAITA/AALO CUTLET+RAITA VEGAN AALO KI BHUJIA TORI DAAL MAASH KARAILAY PYAZ KALI CHANNY/ DAAL CHANA AALO KA PARATHAY	NON-VEGETARIAN CHICKEN KARAHAI DAAL/ ACHAR GOSHT DAAL FRIED RICE CHICKEN MANCHURIAN KADDU CHICKEN BURYANI+RAITA AALO CHICKEN CHICKEN PULAO+RAITA AALO QEEMA VEGETARIAN AALO PULAO+RAITA CHANAY PULAO+RAITA VEGAN AALO PULAO CHANAY PULAO AALO PALAK

LCWU Hostel Menuw

SDG-2: Zero Hunger Indicator (2.3)

Available at: <https://lcwu.edu.pk/images/2022/LCWUHostelMenu.jpg>



Inauguration of Food and Nutrition Labs

SDG-2: Zero Hunger Indicator (2.4)

Available at: <https://lcwu.edu.pk/news-archive-2023/march/3351-inauguration-of-food-and-nutrition-and-textile-and-chemistry-labs.html>

National Hunger

Lahore College for Women University (LCWU) actively advances sustainable practices through community outreach and initiatives. At its Kala Shah Kaku campus, LCWU has established a kitchen garden where local vendors, gardeners,

and community members, including farmers and small landowners, participate in sessions on sustainable agriculture, food preservation, and responsible sourcing. The university promotes eco-friendly food purchasing by encouraging contractors to source locally, prioritize seasonal and organic produce, minimize packaging, and follow ethical practices. Contractors are licensed by the Punjab Food Authority, adhering to guidelines that support sustainable procurement and reduce environmental impact.



Events for Local Farmers and Food Producers

SDG-2: Zero Hunger Indicator (2.5)

Available at: <https://www.facebook.com/lcwu.official/posts/741607618003479/>



Sensors for Healthcare and Food Security Applications in Low-Resource Settings

SDG-2: Zero Hunger Indicator (2.5)

Available at: <https://lcwu.edu.pk/news-archive-2023/march/3451-a-talk-on-optical-sensors-for-healthcare-and-food-security.html>





SDG-3 GOOD HEALTH AND WELL BEING

“Ensure healthy lives and promote well-being for all at all ages” (UN, 2015)

Number of Students Graduating in Health Professions

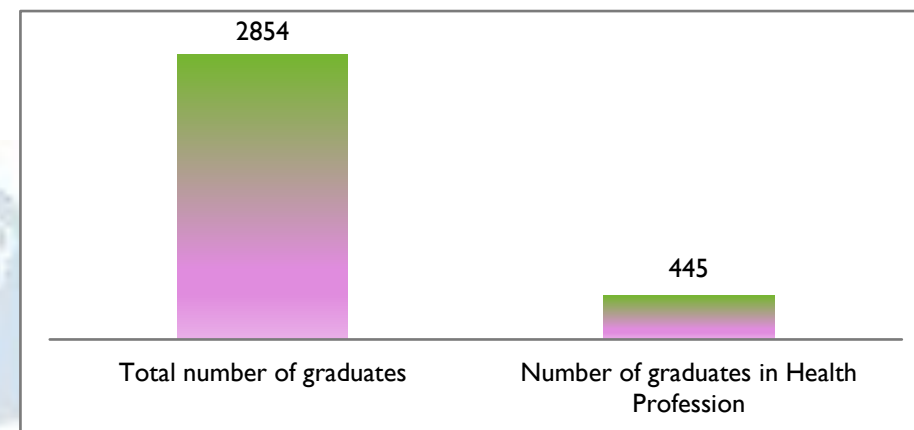
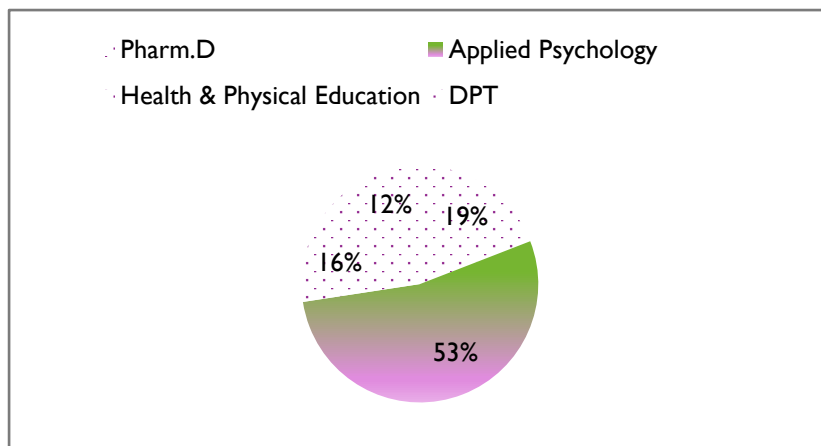
In 2023, Lahore College for Women University (LCWU) produced a total of 2,854 graduates, of which 445 specialized in health professions. This represents approximately 15.6% of the university’s total graduates, highlighting LCWU’s commitment to contributing skilled professionals in the healthcare field.

Number of Graduates in Health Profession (Jan 2023- Dec 2023)				
Pharm. D	DPT	Applied Psychology	Health & Physical Education	Total No. of Graduates in Health Profession
85	53	238	69	445

Number of Graduates in Health Professions (Jan 2023- Dec 2023)

SDG-3: Good Health and Well-Being Indicator (3.2)

Available at: https://docs.google.com/document/d/1rwoWhm8pZ3ef5n-1YEDvpgJrmA-n3MiWUq_mYoGVvo/edit?tab=t.0



Number of Graduates in Health Professions (2023)
 SDG-3: Good Health and Well-Being Indicator (3.2)
 Available at: https://docs.google.com/document/d/1rwoWhm8pZ3ef5n-1YEDvpgJrmA-n3MiWUq_mYoGVvo/edit?tab=t.0

Number Graduating in Health Professions Vs Total Number of LCWU Graduates (2023)
 SDG-3: Good Health and Well-Being Indicator (3.2)
 Available at: https://docs.google.com/document/d/1rwoWhm8pZ3ef5n-1YEDvpgJrmA-n3MiWUq_mYoGVvo/edit?tab=t.0

Collaborations and Health Services

Lahore College for Women University (LCWU) actively engages in collaborations and provides health services to support student and community well-being. Through partnerships with healthcare organizations, hospitals, and NGOs, LCWU ensures that students and local residents have access to essential health services, educational workshops, and awareness programs. These collaborations aim to provide regular medical checkups, mental health counseling, and wellness programs that foster a healthier campus environment.



MoU between LCWU and Pakistan Scouts Association
 SDG-3: Good Health and Well-Being Indicator (3.3)
 Available at: <https://www.lcwu.edu.pk/news-archive-2023/june/3502-mou-signed-between-lcwu-and-pakistan-scouts-association.html>

Additionally, LCWU's partnerships with health-related institutions create hands-on learning opportunities for students, particularly those in health and life sciences, allowing them to gain practical experience and contribute meaningfully to community health initiatives. By fostering these collaborations, LCWU reinforces its commitment to holistic education, public health, and community service.



MOU between Department of Gender and Development Studies LCWU and White Ribbon Pakistan

SDG-3: Good Health and Well-Being Indicator (3.3)

Available at: <https://www.lcwu.edu.pk/news-archive-2023/june-4/3620-department-of-gender-and-development-studies-signs-mou-with-white-ribbon-pakistan.html>



Health Outreach Programmes

SDG-3: Good Health and Well-Being Indicator (3.3)

Available at: <https://www.lcwu.edu.pk/news-archive-2023/june-4/3617-students-of-gds-has-completed-their-project-aghai.html>



Num of
Graduates
4439

MOUs
12

No of graduates
entitles to teach at
primary level
458

Number of Students
starting a degree
3857

No of 1st generation
students starting a
degree
1388



SDG-4 QUALITY EDUCATION

“Ensure inclusive and equitable quality education and promote lifelong learning opportunities for all” (UN, 2015)

Proportion of Graduates with Teaching Qualification

At Lahore College for Women University (LCWU), a notable portion of graduates obtain teaching qualifications, reflecting the university’s emphasis on producing qualified educators to contribute to the education sector. In 2023, for instance, a significant percentage of graduates completed programs in education, preparing them for roles as teachers, curriculum developers, and educational leaders.

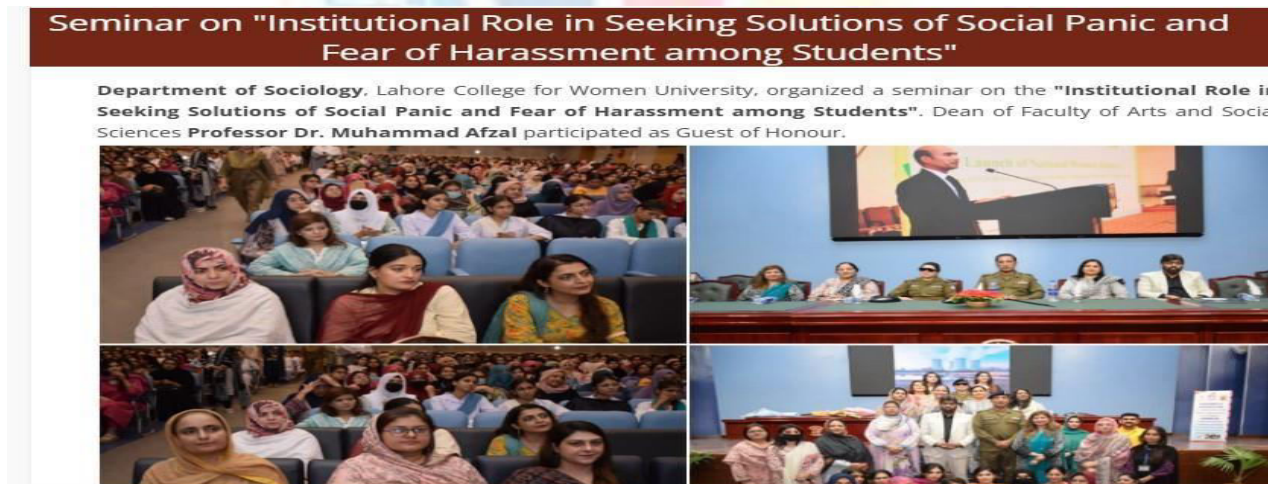
Lifelong Learning Measures

Lahore College for Women University (LCWU) promotes lifelong learning through a range of initiatives and accessible resources. The university offers diverse public resources, such as libraries, digital access, and open workshops, designed to benefit not only students but also the broader community. Public events, including guest lectures, seminars, and cultural exhibitions, encourage continuous education on a variety of topics and are open to all.



LCWU Online Course Directory
SDG-4: Quality Education Indicator (4.3)
Available at: <http://oed.lcwu.edu.pk/7>

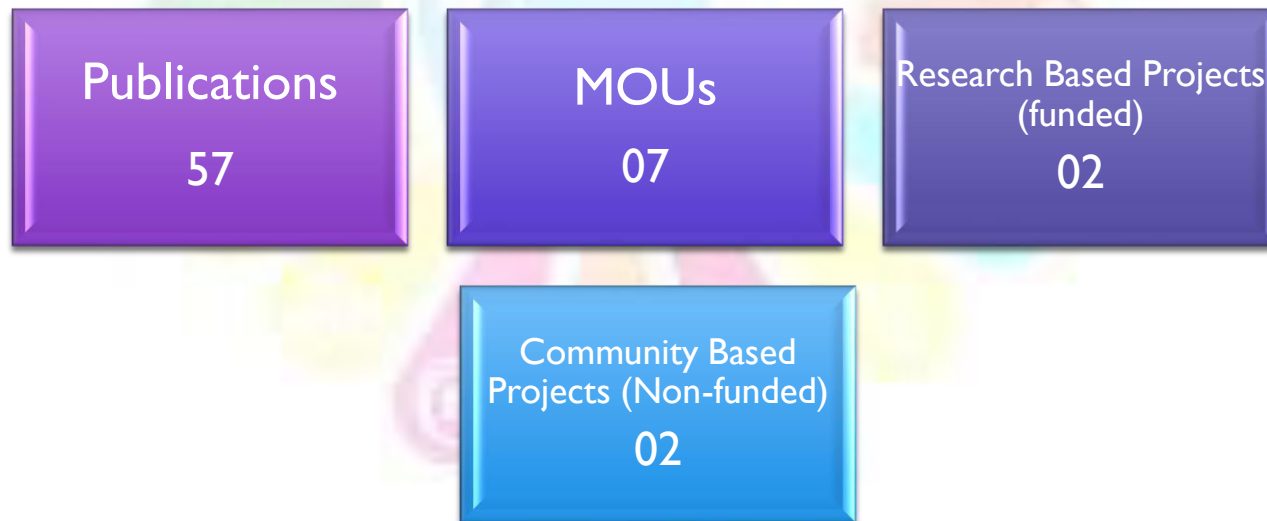
LCWU also organizes vocational training events aimed at skill development in areas such as digital literacy, entrepreneurship, and handicrafts, providing practical skills that enhance employability. Education outreach activities extend beyond the campus, involving collaborations with local schools, community centers, and rural development projects to bring knowledge and skill-building opportunities to underserved areas.



Institutional Role in Seeking Solutions of Social Panic and Fear of Harassment among Students

SDG-4: Quality Education Indicator (4.3)

Available at: <https://www.lcwu.edu.pk/news-archive-2023/june-4/3621-institutional-role-in-seeking-solutions-of-social-panic-and-fear-of-harassment-among-students.html>





SDG-5 GENDER EQUALITY

“Achieve gender equality and empower all women and girls” (UN-2015)

Proportion of First-Generation Female Students

Lahore College for Women University (LCWU) actively supports first-generation female students, who represent a significant proportion of its student body. Out of the 3,857 women starting a degree, 1,157 are first-generation students. These students are often the first in their families to pursue higher education, reflecting LCWU’s commitment to empowering women from diverse socio-economic backgrounds. The university’s initiatives, including scholarships, mentorship programs, and academic support, are designed to help first-generation students overcome unique challenges and thrive in their studies.

Student Access Measures

Lahore College for Women University (LCWU) has developed inclusive measures to make higher education accessible for women from diverse backgrounds. Scholarship programs support financially disadvantaged students, while flexible admission policies aid those from rural areas and underrepresented groups. Accessible facilities and academic support, including tutoring and counseling, ensure that students with disabilities and first-generation students thrive on campus. E-learning options cater to students with family or work commitments, and extra-curricular opportunities foster leadership and personal growth. Together, these initiatives reflect LCWU's commitment to an equitable and empowering educational experience for all students.



**Prime Minister's Youth Laptop Distribution
Ceremony Held at LCWU**

SDG-5: Gender Equality Indicator (5.3)

Available at: <https://www.lcwu.edu.pk/news-archive-2023/june-3/3538-prime-minister-s-youth-laptop-distribution-ceremony-held-at-lcwu.html>

Proportion of Senior Female Academics

At Lahore College for Women University (LCWU), a significant proportion of senior academic positions are held by women, with 248 out of 264 senior academic staff being female. This reflects the institution's commitment to gender equity and leadership development for women in academia. Female academics occupy a range of senior roles across departments, contributing to a supportive environment that encourages female representation at all academic levels. This high proportion of senior female faculty also provides mentorship opportunities for students and junior faculty, helping foster a strong academic and professional network that promotes women's advancement within the university and beyond.

Workshop on Digital Skills Learning & Business Incubation Program at LCWU: This event aimed to empower women by enhancing their digital skills, facilitating entrepreneurship, and fostering self-sufficiency



Workshop on Digital Skills Learning & Business Incubation Program

SDG-5: Gender Equality Indicator (5.3)

Available at: <https://www.lcwu.edu.pk/news-aug2020/3767-women-entrepreneurship-workshop-navigating-the-path-to-success.html>

Proportion of Women Receiving Degrees

At Lahore College for Women University (LCWU), the proportion of women receiving degrees is exceptionally high, as the university primarily serves female students. LCWU's commitment to empowering women through education is reflected in its diverse academic programs, which cater to various fields such as science, technology, humanities, health, and social sciences. This focus ensures that women graduates are well-prepared for professional and academic success, contributing significantly to gender representation and empowerment in Pakistan's workforce and higher education.

A session aimed at enhancing women's entrepreneurial skills, especially in the critical area of pitching was organized in December 2023 at LCWU. Women participants learned how to effectively present their business ideas to potential investors and stakeholders, gaining the necessary confidence and skills to secure funding and support for their ventures.



Session on Enhancing Women's Entrepreneurial Skills

SDG-5: Gender Equality Indicator (5.3)

<https://lcwu.edu.pk/news-archive-2023/december/3824-session-on-elevate-your-entrepreneurial-skills-pitching-for-success.html>

Women's Progress Measures

Lahore College for Women University (LCWU) actively supports women's progress through a variety of strategic initiatives aimed at empowering female students and staff. Programs at LCWU focus on skills development, leadership training, and career readiness to equip women with the tools they need to excel in their respective fields. Additionally, LCWU engages in community outreach to raise awareness about gender equality, hosting workshops and seminars that address women's health, financial literacy, and professional skills. Scholarships and financial aid are provided to support women from underserved backgrounds, ensuring greater access to higher education. Through these measures, LCWU not only enhances women's academic and professional opportunities but also contributes to broader social change by promoting gender equity and inclusivity.

Awareness Raising Events for Women Empowerment

The Department of Gender and Development Studies, LCWU organized an extension lecture on "The Punjab Protection of Women Against Violence Act" in collaboration with the Women Development Department, Government of Punjab. The lecture covered key aspects, facts, and provisions of the Act, informing students about protections for women against violence in Pakistan. Additionally, the process for filing complaints and details on court proceedings were shared with students.



lecture on "The Punjab Protection of Women Against Violence Act"

SDG-5: Gender Equality Indicator (5.3)

Available at: <https://www.lcwu.edu.pk/news-aug2020/3812-an-extension-lecture-on-the-punjab-protection-of-women-against-violence-act.html>



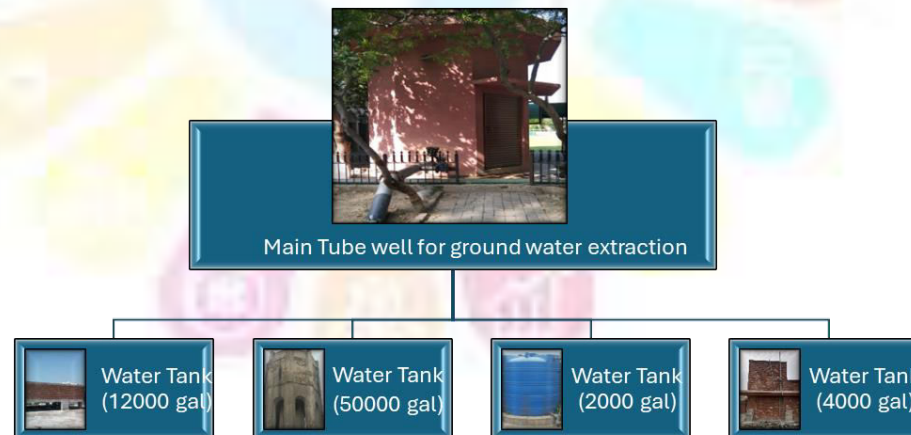


SDG-6 CLEAN WATER AND SANITATION

“Ensure availability and sustainable management of water and sanitation for all” (UN,2015)

Water Consumption per Person

Lahore College for Women University (LCWU) operates independently of government water supply to meet its water demands. Through an agreement with the local government, LCWU has installed a tube well on its main campus, extracting groundwater daily from a depth of 700 feet. This water is then distributed to four large-capacity tanks located in various blocks of the university, with storage capacities of 50,000, 12,000, 6,000, and 4,000 gallons respectively. Groundwater extraction at LCWU varies seasonally, with peak usage from August to May reaching up to 322,000 gallons per day, while off-season demand (June to July) decreases to 72,000 gallons per day. This results in a daily extraction range of approximately 1,046 to 1,294.6 cubic meters.



Water supply system of Lahore College for Women University

SGD-6: Clean Water and Sanitation Indicator (6.2)

Available at: <https://beta.lcwu.edu.pk/images/2022/Waterreport.pdf>

Water Usage and Care

At Lahore College for Women University (LCWU), wastewater from campus sewage lines flows into a large septic tank located in the university parking area for partial sedimentation. From there, the treated wastewater is directed to the main sewage drain in Shadman, Lahore, eventually reaching the city's main wastewater treatment plant in Gulshan-e-Ravi, 22 km away.

To ensure the health and safety of its community, LCWU established an Environmental Committee in 2012 to oversee campus water quality and implement pollution prevention measures. Standard operating procedures are in place, including bimonthly cleaning of water storage tanks, regular quality checks, and the installation of 44 water coolers with triple filters across campus. Additionally, a 500-liter capacity water filtration plant has been set up to meet demand for safe drinking water. Efforts to develop water-conscious infrastructure are ongoing, and approximately 0.15% of campus green areas are planted with drought-tolerant xerophytes.



Septic tank for partial sedimentation of collected wastewater

SGD-6: Clean Water and Sanitation (6.3)

Available at:

<https://beta.lcwu.edu.pk/images/2022/Waterreport.pdf>



Water filtration plant and water coolers

SGD06 Clean Water and Sanitation (6.3)

Available at:

<https://beta.lcwu.edu.pk/images/2022/Waterreport.pdf>

Water Reuse

LCWU is in the process of approving a water reuse policy to formalize measurement and monitoring efforts. Currently, wastewater from water coolers and air conditioning units is repurposed for irrigating the university's green areas, supporting sustainable water management practices on campus.



Water reuse from water coolers and AC unit

SGD06 Clean Water and Sanitation (6.4)

Available at: <https://beta.lcwu.edu.pk/images/2022/Waterreport.pdf>

Water in the Community

Several departments at LCWU offer courses related to water conservation. The Environmental Sciences Department covers topics such as water pollution, wastewater management, and wetland management, while City and Regional Planning offers courses in environmental planning, sustainable development, and landscape design. Geography addresses hydrogeography and natural hazards, and Botany includes environmental biology.

The university promotes water conservation by displaying reminders at drinking points and is developing an operational framework for sustainable water extraction and a legal framework for cooperation on water security. Departments like Geography, Environmental Science, Gender Studies, and Botany conduct programs to raise awareness and engage the community in water conservation efforts, including initiatives to highlight the importance of preserving critical water reservoirs like the Tarbela Dam.



Address by Dr. Nausheen Mazhar on Water Quality Challenges of Tarbela Reservoir at University of Paris on 21st September, 2023
SGD-6: Clean Water and Sanitation Indicator (6.5)
Available at: <https://www.lcwu.edu.pk/news-archive-2023/june-4/3657-dr-nausheen-mazhar-lcwu-addresses-water-quality-challenges-of-tarbela-reservoir-at-university-of-paris.html>



12th December 2023 (Tuesday)
LCWU Geography Department arranged one-day international Seminar on Tarbela Reservoir's Hydrodynamic Exploration
SGD06 Clean Water and Sanitation Indicator (6.5)
Available at: <https://www.lcwu.edu.pk/news-archive-2023/december/3851-1-day-international-seminar-on-tarbela-reservoir-s-hydrodynamic-exploration.html>
<https://beta.lcwu.edu.pk/images/2022/Waterreport.pdf>



International Seminar on Sustainable Agriculture in Climate Change Mitigation and Adaptation 7th March 23
SGD-6: Clean Water and Sanitation Indicator (6.5)
Available at: <https://www.lcwu.edu.pk/news-archive-2023/march/3367-international-seminar-on-sustainable-agriculture-in-climate-change-mitigation-and-adaptation.html>





SDG-7 AFFORDABLE AND CLEAN ENERGY

“Ensure access to affordable, reliable, sustainable, and modern energy for all” (UN, 2015)

University Measures Towards Affordable and Clean Energy

LCWU demonstrates its commitment to UN Sustainable Development Goal 7 by integrating renewable energy solutions on campus. Through solar installations and energy-efficient technologies, the university reduces its carbon footprint and operational costs, which are reinvested into campus infrastructure. LCWU's dedication to clean energy aligns with national sustainability efforts and global goals, with plans to increase renewable energy use each year, fostering an eco-friendly campus environment.



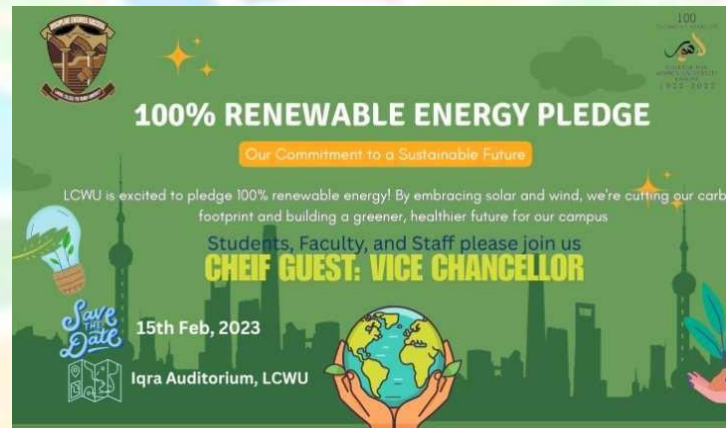
The Solar-PV Renewable Energy Systems workshop Part I and Part II
SDG-7: Affordable and Clean Energy Indicator (7.4)
Available at: <https://www.lcwu.edu.pk/news-aug2020/3103-continuous-professional-development-workshop.html>



Renewable Energy Planning & Demands
SDG-7: Affordable and Clean Energy Indicator (7.4)
Available at: <https://www.lcwu.edu.pk/news-archive-2022/november/3188-workshop-on-renewable-energy-planning-and-demands.html>

Energy and Community

LCWU actively supports local sustainable energy initiatives by offering mentorship, training workshops, and access to university facilities, empowering entrepreneurs to develop clean energy solutions. These efforts foster financially and environmentally sustainable businesses that enhance community energy resilience. To further support these ventures, LCWU provides resources and guidance on renewable energy technologies. Additionally, the university is developing a comprehensive policy framework to promote affordable and sustainable energy access, aligning its efforts with both local and global Sustainable Development Goal 7 initiatives.



100% Renewable Energy Pledge
SDG-7: Affordable and Clean Energy Indicator (7.4)
Available in: <https://www.lcwu.edu.pk/news-archive-2023/november>

8 DECENT WORK AND ECONOMIC GROWTH



Publications

07

MOUs

10

Professional Development
Activities

14

8 DECENT WORK AND ECONOMIC GROWTH



SDG-8 DECENT WORK AND ECONOMIC GROWTH

“Promote sustained, inclusive and sustainable economic growth, full and productive employment and decent work for all” (UN,2015)

Employment Practice

LCWU is dedicated to fostering an inclusive, equitable, and supportive work environment. Employment practices are structured to promote diversity, professional growth, and fair treatment for all faculty and staff. LCWU adheres to transparent recruitment processes and provides opportunities for skill development and career advancement. By maintaining policies that emphasize work-life balance, non-discrimination, and equal pay, the university upholds its commitment to sustainable and ethical employment practices, aligning with both institutional values and international standards.



Business Incubation Center

SDG-8: Decent work and Economic growth Indicator (8.2)

Available at: <https://www.lcwu.edu.pk/component/content/category/222-k-bic.html?Itemid=56>




E-Rozgar LCWU

SDG-8: Decent work and Economic growth Indicator (8.2)

Available at: <https://www.lcwu.edu.pk/e-rozgaar.html>

Proportion of Students Taking Work Placements

The e-Rozgaar LCWU Center, an initiative by the Government of Punjab, aims to reduce unemployment among educated youth while empowering women and enhancing digital literacy. With over 2,000 female graduates across 19 batches, the center offers training in digital marketing, technical skills, and creative design, resulting in earnings exceeding \$54,000. LCWU is also committed to fair employment practices, ensuring equal pay, preventing discrimination, eliminating child labor, and adhering to Punjab's labor laws to promote a supportive, inclusive work environment.



Punjab Information Technology Board
www.erozgaar.pitb.gov.pk

FREELANCING TRAINING COURSE

Admissions are now open at LCWU Lahore.
Lab is located at Ganga Ram Building.

- Dynamic opportunities for students.
- Training will be held for three months.
- Superlative Training for getting monthly income at home.

33 Crore+ Total earnings | 20,000+ Graduated

For Online Registrations:	Three Domains:	Contact:	Last Date:
Domicile: Punjab	Technical: 9:00-11:00	00 /erozgaar	
Education: At least 16 years	Non-Technical: 11:00-1:00		
Age limit: 35 years old	Creative Design: 1:00-3:00		

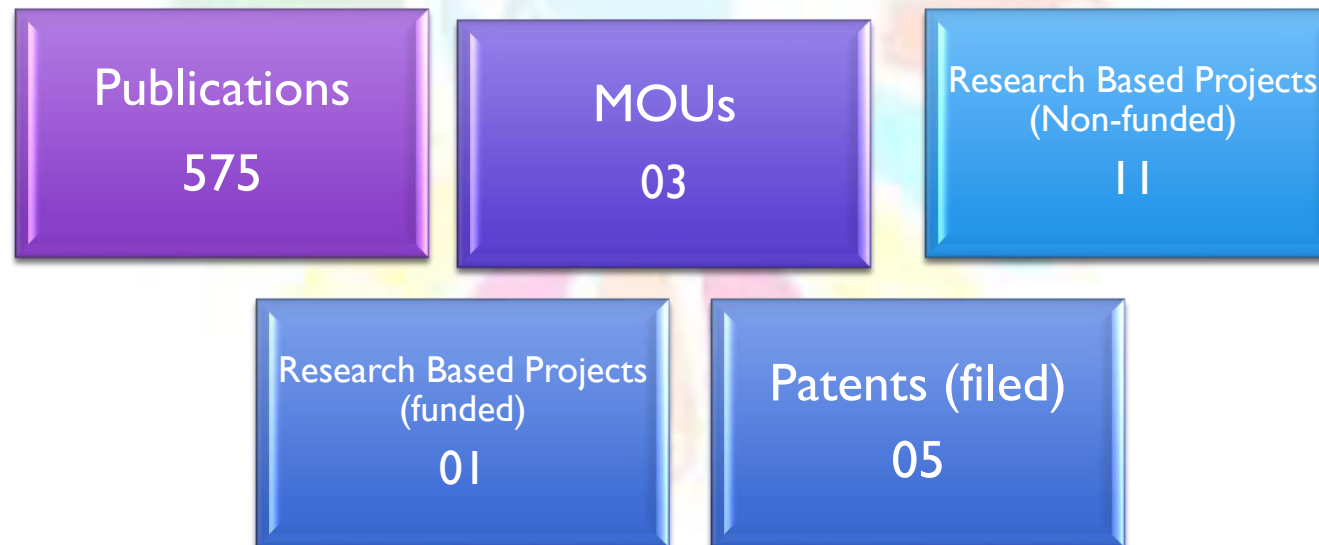
Proportion of Employees on Secure Contracts

LCWU ensures that a significant proportion of its employees are on secure contracts, providing stable employment and job security. The university adheres to labor laws and regulations set by the Government of Punjab, ensuring that employees have access to fair working conditions, benefits, and job protection. This commitment reflects LCWU's dedication to fostering a secure, equitable, and supportive work environment for all staff members.

Freelancing Training Course LCWU
SDG-8: Decent work and Economic growth Indicator (8.4)
Available at: <https://www.lcwu.edu.pk/e-rozgaar.html>



Entrepreneurial Workshop
SDG-8: Decent work and Economic growth Indicator (8.5)
Available at: <https://www.lcwu.edu.pk/news-aug2020/3808-entrepreneurial-project-workshop-2023.html>





SDG-9 INDUSTRY, INNOVATION AND INFRASTRUCTURE

“Build resilient infrastructure, promote inclusive and sustainable industrialization and foster innovation”(UN,2015)

Research on Industry, Innovation and Infrastructure

Our university is committed to fostering innovation and research in alignment with Sustainable Development Goal 9, which emphasizes building resilient infrastructure, promoting inclusive and sustainable industrialization, and encouraging innovation. We prioritize interdisciplinary collaboration to tackle complex sustainability challenges, bringing together experts from diverse fields such as engineering, environmental science, social sciences, and business. This approach has led to groundbreaking projects that integrate various insights to develop innovative solutions.

Sr. No.	Name of Faculty/ Institute	HEC Recognized Journals categorized by HJRS			Others	Grand Total	Total Impact Factor
		W	X	Y			
1.	Faculty of Science & Technology	113	37	36	2	188	570.2
2.	Faculty of Arts & Social Sciences	19	19	101	7	160	99.8
3.	Faculty of Islamic & Oriental Learning	1	5	47	5	58	9
4.	Faculty of Management & Administrative Sciences	11	7	20	-	38	49.9
5.	Faculty of Engineering & Technology	6	2	1	1	10	35.6
6.	Faculty of Education	6	3	44	2	55	20.2
7.	Faculty of Pharmaceutical & Allied Health Sciences	54	7	4	1	66	281.2
8.	Non-Teaching Department	4	2	-	-	6	25.3
Total		210	80	253	18	575	1091.2

Research Publication (2023)

SDG-9: Industry, Innovation and Infrastructure Indicator (9.1)

Available at: <https://lcwu.edu.pk/news-archive-2020/news-archive-2020-june/1924-oric-global-innovators.html>

Patents Citing University Research

Patents citing university research are a key indicator of the impact and relevance of academic innovation. When university research leads to patent filings, it demonstrates the practical application of ideas and breakthroughs in real-world technologies and industries. These patents often reflect the university's role in driving technological advancements, fostering creativity, and contributing to sustainable industrial development. Patents citing university research not only validate the quality of the work but also highlight its potential to address global challenges, especially in areas such as renewable energy, sustainability, and industrial innovation.

Patents Filed					
Sr. No	Title	Inventor	Filing	Application No	Department
1.	Thermogalvanic device to harvest energy from automotive engine exhaust	Associate Prof. Engr. Dr. Ali Hussain Kazim, Engr. Muhammad Ahsan Iqbal Khan, Engr. Dr. Aqsa Shabbir	8 th June 2023	363/2023	Electrical Engineering
2.	A low-cost automated cardiopulmonary device	Engr. Dr. Ali Hussain Kazim, Engr. Dr. Aqsa Shabbir , Mustaneer Hassan, Muhammad Ahsan Mehmood, Ibrahim Guraya,	8 th June 2023	362/2023	Electrical Engineering
3.	Bioprocess For the Production of Taxol from Eurotium Rubrum	Dr. Umar Farooq Gohar, Prof. Dr. Hamid Mukhtar, Dr. Muhammad Zia Ul Haq	March 2023	150/2023	ORIC
4.	A Novel Herbal Preparation Against Wound Infections	Prof. Dr. Humaira M. Khan , Ms.Maliha Sheikh, Ms. Rabia Sabri	March 2023	131/2023	Pharmacy
5.	Antifungal ora-base preparation against candida albicans	Prof. Dr. Humaira Majeed Khan , Ms. Rabia Sabri	January 2023	52/2023	Pharmacy

University Spin Offs

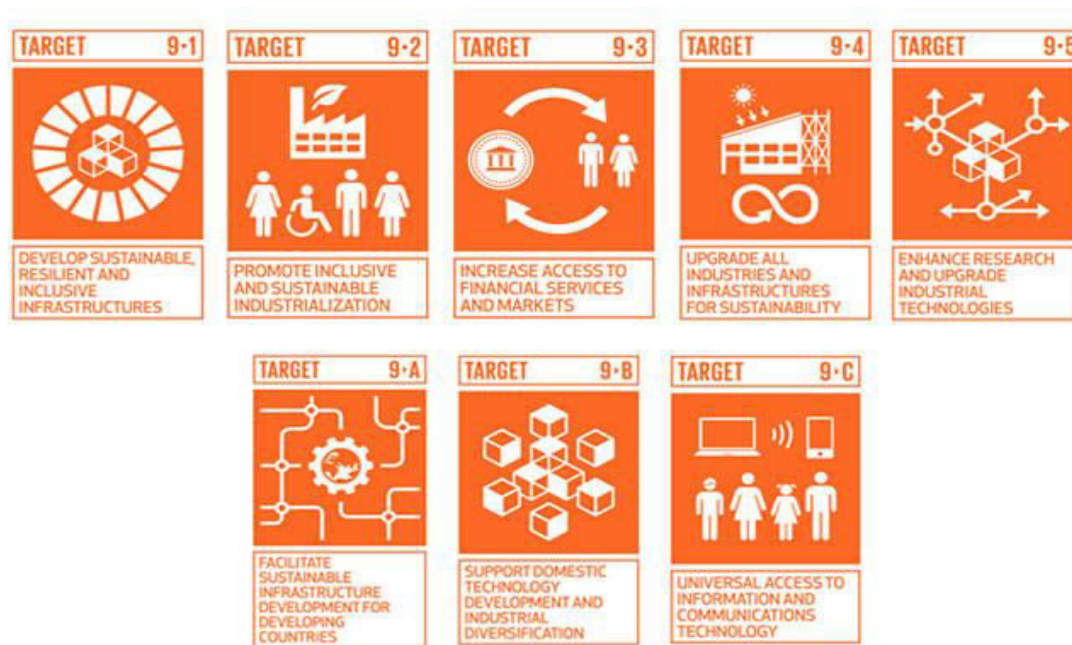
Lahore College for Women University (LCWU) plays a vital role in translating academic research into practical applications through spin-offs, which drive economic development and sustainable industrialization. By leveraging academic expertise and resources, LCWU fosters market-driven solutions that contribute to local and regional growth. The university has established a Business Incubation Center (BIC) with an investment of PKR 40 million, aimed at supporting startups and industry spin-offs. The BIC runs regular cohorts encouraging students to create sustainable solutions while enhancing their entrepreneurship skills. It provides resources, mentorship, and funding to help translate research ideas into viable businesses. Among the potential spin-offs currently in the incubation phase are *Custom Craft*, focusing on e-commerce services (PKR 1.3 million), and *Herbal Mart*, specializing in organic herbal products (PKR 0.3 million). The center has successfully secured PKR 1.6 million for these ventures, further promoting innovation and commercialization.

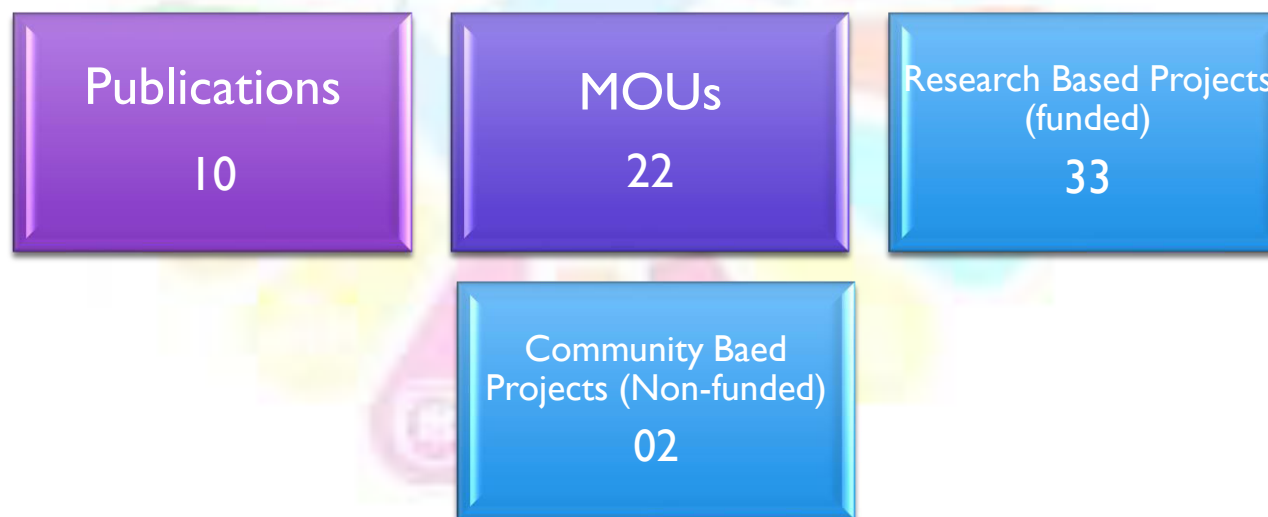


Seminar "Entrepreneurship Essentials" by ORIC
SDG 09 Industry, Innovation & Infrastructure
Available at: <https://beta.lcwu.edu.pk/news-archive-2023/april/3433-seminar-entrepreneurship-essentials-by-oric.html>

Research Income from Industry

At Lahore College for Women University (LCWU), research income from industry is a crucial component of fostering innovation and advancing the university's mission of addressing real-world challenges. Through collaborative research projects and partnerships with industry, LCWU has been able to generate funding that supports groundbreaking work in various fields such as sustainability, renewable energy, and technology. By working closely with industry partners, LCWU ensures that its research has a direct impact on economic development, technological advancement, and the promotion of sustainable practices, aligning with the university's goal of fostering creativity and addressing critical sustainability challenges.







SDG-10 REDUCED INEQUALITIES

“Reduce inequality within and among countries” (UN,2015)

SDG 10 promotes the social, economic and political inclusion of all people, regardless of age, gender, disability, race, ethnicity, origin, religion, economic or other status. Lahore College for Women University (LCWU) is committed to creating an inclusive campus environment that supports a smooth and rewarding student life cycle. The University proactively implements initiatives to facilitate the well-being and success of its students and staff. It also takes deliberate actions to support students and staff from diverse backgrounds. LCWU strives to eliminate social, economic, political, age, gender, racial, ethnic, religious, and ability-based inequalities, fostering a culture of equity, diversity, and belonging.

First-Generation Students

Lahore College for Women University (LCWU) is committed to supporting first-generation students, recognizing the unique challenges they face as the first in their families to pursue higher education. LCWU provides tailored resources, including scholarships, mentorship programs, and academic support services, to help these students succeed in their academic journey. By fostering an inclusive and supportive environment, LCWU empowers first-generation students to thrive and become role models in their communities, contributing to the university's mission of reducing inequalities and expanding access to higher education.

Students from Developing Countries

Lahore College for Women University (LCWU) welcomes and supports students from developing countries, offering a range of resources to help them adjust to life and studies in a new environment. LCWU's inclusive policies, cultural exchange programs, and support services ensure that international students feel welcomed and valued. The university provides guidance on academic, social, and cultural aspects of university life, helping these students overcome challenges and achieve their educational goals. Through these efforts, LCWU strengthens cross-cultural understanding and contributes to global educational equity.

Proportion of Students with Disabilities

Lahore College for Women University (LCWU) is committed to fostering an inclusive learning environment for students with disabilities. The university provides accessible facilities, academic accommodations, and support services to ensure that students with disabilities can fully participate in academic and campus life. While the specific proportion of students with disabilities may vary, LCWU prioritizes accessibility and equal opportunities, striving to create a supportive environment where all students can thrive, regardless of their physical or learning challenges.

Proportion of Employees with Disabilities

Lahore College for Women University (LCWU) is dedicated to promoting diversity and inclusion among its staff, including employees with disabilities. The university values the contributions of employees with disabilities and provides an accessible workplace environment, ensuring they have the necessary resources and support to succeed in their roles. Although the specific proportion of employees with disabilities may vary, LCWU's commitment to inclusivity reflects its broader mission of equal opportunity and empowerment within the academic community.

Measures against Discrimination

Lahore College for Women University (LCWU) has implemented several measures to ensure an inclusive and non-discriminatory environment. The university maintains a non-discriminatory admissions policy, ensuring equal access for all applicants. To support students with disabilities, LCWU has a disability accommodation policy, accessible facilities, and dedicated disability support services, including a disability access scheme.

LCWU is also committed to recruiting and supporting underrepresented groups, providing targeted access programs and support services to promote diversity within the student body. The university employs a diversity officer to oversee and strengthen these initiatives and implements anti-discrimination policies to foster an equitable environment. Through these comprehensive measures, LCWU promotes a campus culture of inclusivity and respect for diversity.

USAID-funded Merit and Needs-based Scholarship Program

USAID-funded Merit and Needs based Scholarship Program provides scholarships to students from financially disadvantaged households since 2004. To support enrolled students of universities from the flood affected districts, the Program will provide scholarships to enable them to complete their university degrees. 50% Scholarships are reserved for Female Students only. Undergraduate Scholarships for Flood 2022 Affected Students only.

SDG-10 Reduced Inequalities. Indicator: 10.6.2

Available at: <https://www.lcwu.edu.pk/news-archive-2023/february/3346-usaid-funded-merit-and-needs-based-scholarship-program.html>



International Social Justice Day
SDG10 Reduced Inequalities Indicator 10.6.4
Available at: <https://www.lcwu.edu.pk/news-archive-2023/februray/3334-international-social-justice-day-celebrated-by-sociology-department.html>



A Program on “Role of Women in Science and Nation Building”
SDG 10 Reduced Inequalities Indicator 10.6.5
Available at: <https://www.lcwu.edu.pk/news-archive-2023/februray/3343-role-of-women-in-science-and-nation-building.html>



lecture on "The Punjab Protection of Women against Violence act"
SDG10 Reduced Inequalities Indicator 10.6.11
 Available at: <https://www.lcwu.edu.pk/news-aug2020/3812-an-extension-lecture-on-the-punjab-protection-of-women-against-violence-act.html>



Seminar titled "Population Dynamics and Importance of Demographic Analysis to Promote Evidence-based Policy Formulation"
SDG10 Reduced Inequalities Indicator 10.6.7
 Available at: <https://lcwu.edu.pk/news-archive-2023/november/3793-6th-international-punjabi-zuban-adab-fnn-tv-saqafat-conference.html>



seminar on the "Institutional Role in Seeking Solutions of Social Panic and Fear of Harassment among Students"
SDG10 Reduced Inequalities Indicator 10.6.11
 Available at: <https://www.lcwu.edu.pk/news-archive-2023/june-4/3621-institutional-role-in-seeking-solutions-of-social-panic-and-fear-of-harassment-among-students.html>



MOUs

04

Professional Development
Activities

02

Research Based Projects
(Non-funded)

02



SDG-11 SUSTAINABLE CITIES AND COMMUNITIES

“Make cities and human settlements inclusive, safe, resilient and sustainable” (UN,2015)

Support of Arts and Heritage

Lahore College for Women University (LCWU) actively supports arts and heritage preservation, offering public access to various cultural and educational spaces on campus. The university provides access to its historical buildings, libraries, and museums, allowing the public to engage with its architectural heritage and academic resources. Additionally, LCWU maintains green spaces that are open to the community, promoting a connection to nature within an academic setting.

Monumental buildings having public access

SDG 11: Sustainable Cities & Communities: Indicator 11.2 Free access to all significant buildings:

Available at:

https://drive.google.com/file/d/1DXKVcQev4ICrMbPOwhp5SIYkPL6Ify9w/vi?usp=share_link



Expenditure on Arts and Heritage

Lahore College for Women University (LCWU) allocates funds to support arts and heritage initiatives, recognizing the importance of preserving cultural assets and fostering artistic expression. This expenditure includes maintenance of historical buildings, enhancement of library and museum collections, and upkeep of campus green spaces accessible to the public. Additionally, LCWU invests in events, exhibitions, and programs that promote arts and cultural heritage, providing students and the community with opportunities to engage with and celebrate diverse cultural traditions. Through this dedicated funding, LCWU reinforces its commitment to preserving and promoting the arts and heritage as integral parts of its educational mission.



Independent Living Centre

LCWU has established an Independent Living centre for the physically and visually challenged students. LCWU has embarked on the mission to make them fully functioning, productive and independent members of the society.

The purpose of establishing the independent living centre for the support of special person teaching and studying at LCWU is to secure the equal opportunities and equal rights during their life at the campus. The policy of LCWU focuses on the rights of all students to take part in development process with freedom from abuse, neglect and violations of special persons' rights.

Independent Living Centre

SDG 11: Sustainable Cities & Communities: Indicator 11.2 Free access to all significant buildings:
Available at: <https://acrobat.adobe.com/id/urn:aaid:sc:AP:26b42122-2379-4d98-8d49-6ad563b2c490?viewer%21megaVerb=group-discover>

Sustainable Practices

Lahore College for Women University (LCWU) has been gradually incorporating sustainable practices within its campus and facilities. These efforts are aimed at ensuring environmental responsibility and accessibility for all members of the university community. The campus is accessible to the public, including individuals with disabilities, and offers open access to resources like the university library, which hosts events and workshops. LCWU also features museums focused on women's education and local heritage, available to both students and the public. Additionally, the campus includes green spaces that provide recreational areas, support biodiversity, and contribute to sustainability efforts by reducing urban heat and enhancing the overall environment.

The Institute of Pharmacy was formed in 2008
2990 books



Institute of Pharmacy Library

SDG 11: Sustainable Cities & Communities: Indicator: 11.2 Public access to libraries

Available at: https://drive.google.com/file/d/1w16mAKP_EJcfhVXRMfIC_KJaF7EYOR04/view?usp=sharing



LCWU Won All Pakistan Interuniversity Cycling Championship
 SDG 11: Sustainable Cities & Communities: Indicator no. 11.4
 Available at: <https://www.lcwu.edu.pk/news-archive-2024/january-24/3870-all-pakistan-interuniversity-cycling-championship.html>
[=sharing](#)



6th International Punjabi Language Literature (Zuban Adab Fnn ty Saqafat)
 Conference held in Lahore College For Women University
 SDG 11: Sustainable Cities & Communities: Indicator: 11.2
 Available at: <https://drive.google.com/file/d/1ZETe6i5hl-1dLVoj-5HuUesOm9q55XiQ/view?usp=sharing>





SDG-12 RESPONSIBLE CONSUMPTION AND PRODUCTION

“Ensure sustainable consumption and production patterns” (UN,2015)

Operational Measures

Lahore College for Women University (LCWU) implements various operational measures to promote sustainability and reduce environmental impact. The university adheres to an ethical sourcing policy, ensuring that products and materials are responsibly sourced with respect to environmental and social standards. For waste disposal, LCWU has clear policies in place for hazardous materials, ensuring safe and compliant disposal methods. The university also has a landfill policy focused on minimizing waste sent to landfills, prioritizing recycling and waste reduction. Additionally, LCWU is committed to minimizing the use of disposable items across the campus, with policies aimed at reducing single-use plastics and encouraging reusable alternatives. This commitment extends to services provided on campus, with policies in place to reduce disposable products used in university events and daily operations. LCWU also collaborates with suppliers to encourage the adoption of waste minimization practices, and tracks waste generated to ensure efficient waste management and reduction over time.

Proportion of Recycled Waste

Lahore College for Women University (LCWU) is dedicated to sustainability, with efforts focused on increasing the proportion of recycled waste generated on campus. The university actively tracks waste through a waste management system that monitors the types and amounts of waste produced, allowing for effective strategies to reduce landfill contributions. By encouraging recycling and reuse practices, LCWU aims to enhance its waste reduction targets and improve the overall environmental footprint of its campus.

Publication of Sustainability Report

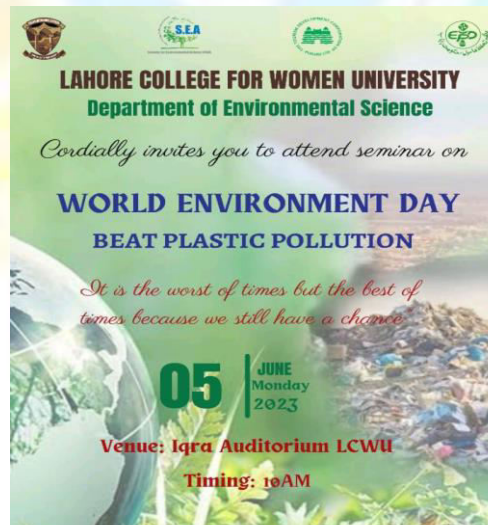
Lahore College for Women University (LCWU) is committed to transparency and accountability in its sustainability efforts. The university regularly publishes a sustainability report that details its environmental initiatives, achievements, and future goals. This report provides insights into LCWU's resource management, waste reduction, energy efficiency, and sustainable campus practices, allowing stakeholders to track progress and stay informed about the university's impact and commitment to sustainability.



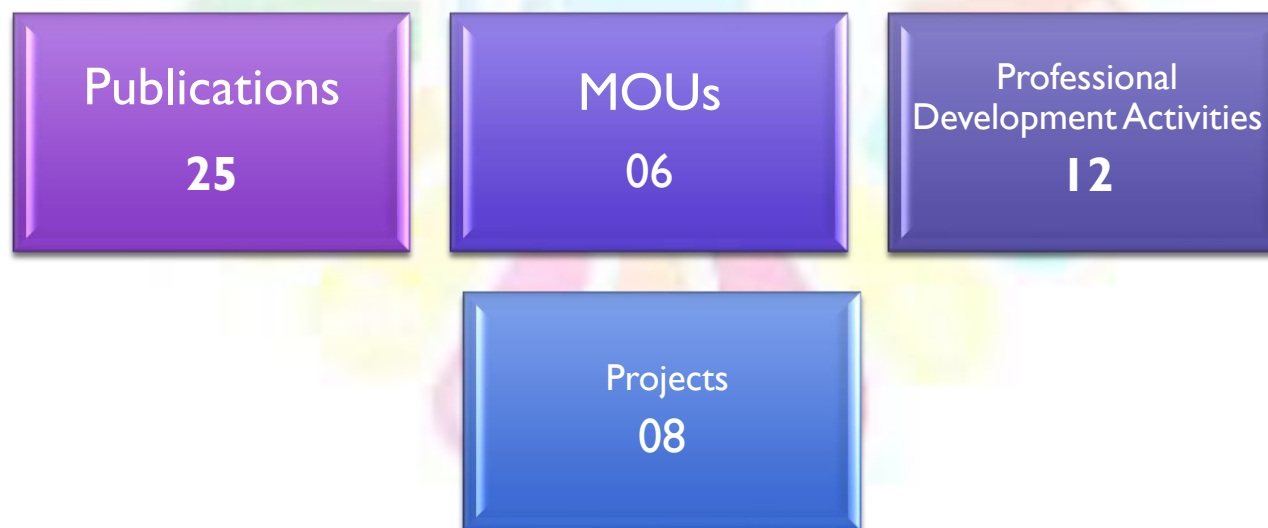
Department of Environmental Sciences Celebrated a Plastic Free Day 2023
SDG-13: Responsible consumption & production
Available at: <https://www.lcwu.edu.pk/news-archive-2023/may/3461-department-of-environmental-sciences-celebrated-a-plastic-free-day-2023.html>



Awareness Walk on Clean & Green LCWU
SDG-13: Responsible consumption & production
Available at: <https://www.lcwu.edu.pk/news-archive-2023/june-4/3618-clean-green-lcwu.html>



World Environment Day 2023
SDG-13: Responsible consumption & production
Available at: <https://www.lcwu.edu.pk/news-archive-2023/june/3476-world-environment-day.html>





SDG-13 CLIMATE ACTION

“Take urgent action to combat climate change and its impact” (UN, 2015)

Low-Carbon Energy Use

Lahore College for Women University (LCWU) actively promotes low-carbon energy use as part of its commitment to sustainability. The university plan is to incorporate energy-efficient systems and renewable energy sources, such as solar panels, to reduce its reliance on fossil fuels and minimize greenhouse gas emissions. By prioritizing low-carbon energy options, LCWU not only reduces its carbon footprint but also fosters a culture of environmental responsibility within its campus community, aligning with global efforts to combat climate change.

Environmental Education Measures

Lahore College for Women University (LCWU) prioritizes environmental education and actively integrates climate awareness into its academic and extracurricular programs. The university offers courses, workshops, and seminars that cover key topics in sustainability and climate science, ensuring that students gain an in-depth understanding of environmental issues. The university is involved in cooperative planning for climate-related disaster response, ensuring readiness and resilience for the community. LCWU also works alongside NGOs to extend the reach of its environmental education efforts, supporting initiatives that advocate for climate action and provide resources to inform public policy on climate issues. Through these partnerships, LCWU fosters an informed, climate-conscious community dedicated to sustainable development.

Commitment to Carbon Neutral University

Lahore College for Women University (LCWU) is dedicated to becoming a carbon-neutral institution as part of its long-term sustainability goals. Through initiatives in renewable energy, energy efficiency, waste reduction, and sustainable transportation, LCWU is working toward significantly reducing its carbon footprint. The university aims to achieve full carbon neutrality by a targeted future date, demonstrating its commitment to environmental responsibility and contributing to global climate action efforts. This commitment aligns with LCWU’s mission to create a sustainable, eco-conscious campus and inspire climate stewardship among students and staff.



An Informational Talk on “SDG’s Need of The Day”
SDG-13: Climate Action Indicator 13.3.1
Available at: [lcwu.edu.pk/news-archive-2023/december/3830-an-informational-talk-on-sdg-s-need-of-the-day.html](https://www.lcwu.edu.pk/news-archive-2023/december/3830-an-informational-talk-on-sdg-s-need-of-the-day.html)



**One-Day International Seminar on
Scholarly Investigations into hydrodynamic and sedimentation
patterns of Tarbela Reservoirs**
SDG-13: Climate Action Indicator 13.3.1
Available at: <https://www.lcwu.edu.pk/news-aug2020/3851-1-day-international-seminar-on-tarbela-reservoir-s-hydrodynamic-exploration.html>



TED Talks under the theme of Climate Change at LCWU
SDG-13: Climate Action Indicator 13.3.1
Available at: <https://www.lcwu.edu.pk/news-archive-2023/december/3837-ted-talks-under-the-theme-of-climate-change-at-lcwu.html>

Pakistan Women University Climate Change Consortium (PWUCC)

LCWU is a partner of the Pakistani Women's University Climate Change Consortium (PWUCCC), a collaborative initiative aimed at advancing the involvement of women scientists and female students in climate change studies. With Pakistan's provinces facing similar climate challenges, this partnership offers valuable opportunities to learn from diverse environments, from mountains to oceans, to promote sustainable development. This collaboration also seeks to address the significant gender gap in climate-related environmental policy and decision-making, working to increase women's participation in these critical fields.

<https://us-pakistan-project-meas.wordpress.ncsu.edu/project/> (Indicator 13.3.3)

Awareness Campaigns

LCWU organized an awareness walk on September 14th, 2023. The primary objectives were to raise awareness about environmental pollution, promote a green and clean environment, and address areas such as trash cleaning, plantation, recycling of waste, energy efficient resources and maintaining hygiene in the cafeteria. By actively engaging in these endeavors, the students demonstrated their commitment towards sustainable environment.



“Clean and Green LCWU”

Metric Indicator 13.3.1

Weblink: <https://www.lcwu.edu.pk/news-archive-2023/june-4/3618-clean-green-lcwu.html>



Publications

10

MOUs

01

Professional Development
Activities

03



SDG-14 LIFE BELOW WATER

“Conserve and sustainably use the world’s ocean, seas and marine resources” (UN,2015)

Supporting Aquatic Ecosystems through Education

Lahore College for Women University (LCWU) supports aquatic ecosystem conservation through educational initiatives and community outreach. The university offers programs focused on the importance of freshwater ecosystems, emphasizing their role in biodiversity and community health. LCWU conducts outreach activities that educate local communities on sustainable practices for preserving freshwater resources, promoting awareness of pollution and habitat conservation.

Additionally, LCWU addresses sustainable fisheries by educating community members on responsible fishing practices to prevent overexploitation. Through workshops, seminars, and collaborations with local organizations, the university raises awareness about the dangers of overfishing and promotes strategies for sustainable fishing practices. These efforts aim to empower communities to protect aquatic ecosystems and ensure the health of local water resources.

Supporting Aquatic Ecosystems through Action

Lahore College for Women University (LCWU) actively supports aquatic ecosystem conservation through both practical actions and educational initiatives. The university organizes events focused on the conservation and sustainable use of ocean resources, raising awareness of marine health and the importance of protecting aquatic environments.

LCWU has also developed policies addressing the sustainable sourcing of food from aquatic ecosystems, encouraging responsible consumption and reducing pressure on marine species. In its direct conservation work, the university is involved in efforts to preserve ecosystems and their biodiversity, conducting research and initiatives aimed at protecting aquatic habitats.

Water Sensitive Waste Disposal

Lahore College for Women University (LCWU) implements water-sensitive waste disposal practices, ensuring that campus operations minimize water contamination and protect nearby water bodies. The university adheres to strict water discharge guidelines and standards, designed to reduce pollutants and manage waste responsibly before it reaches water sources.

Maintaining a Local Ecosystem

Lahore College for Women University (LCWU) is committed to preserving local ecosystems, especially those related to water. The university monitors the health of nearby aquatic ecosystems, conducting regular assessments to identify environmental impacts and ensure the well-being of these habitats. LCWU runs educational programs that promote responsible aquatic stewardship, teaching students and community members about sustainable practices to protect water resources.

LCWU collaborates with local organizations and government agencies to manage shared aquatic ecosystems effectively, ensuring coordinated efforts in conservation and pollution prevention. As part of its watershed management strategy, the university takes an active role in implementing practices that maintain water quality, reduce runoff pollution, and support biodiversity, contributing to the resilience and sustainability of regional water ecosystems.



The one-day workshop on "Entrepreneurial Models in Aquaculture"
Metric Indicator 14.3.1

Weblink: <https://www.lcwu.edu.pk/news-archive-2023/june-2/3523-workshop-on-entrepreneurial-models-in-aquaculture.html>



Seminar on "World Water Day"
Metric Indicator 14.3.1

Weblink: <https://www.lcwu.edu.pk/news-archive-2023/march/3401-seminar-on-world-water-day.html>

LCWU organized “3 Days International Workshop on “Climate Change Impact on Water Glaciers, Rivers & the Ocean”

3 Days International Workshop
Metric Indicator 14.3.1
Weblink: <https://www.lcwu.edu.pk/news-archive-2023/februray/3340-3-days-international-conference-on-climate-change-impact-on-water-glaciers-rivers-the-ocean.html>



Maintain ecosystems and their biodiversity (direct work):

Metric Indicator: 14.3.3

Description: Work directly (research and/or engagement with industries) to maintain and extend existing ecosystems and their biodiversity, of both plants and animals, especially ecosystems under threat

Research Activities	
Research Group & Research Publications	(i) <u>Zoology</u> Lab Facilities (lcwu.edu.pk)
	(ii) <u>Botany</u> Research Groups (lcwu.edu.pk)
	(iii) <u>Environmental Science</u> Research Areas (lcwu.edu.pk)
	(iv) <u>Biotechnology</u> Research (lcwu.edu.pk)

Action plan to reducing plastic waste:

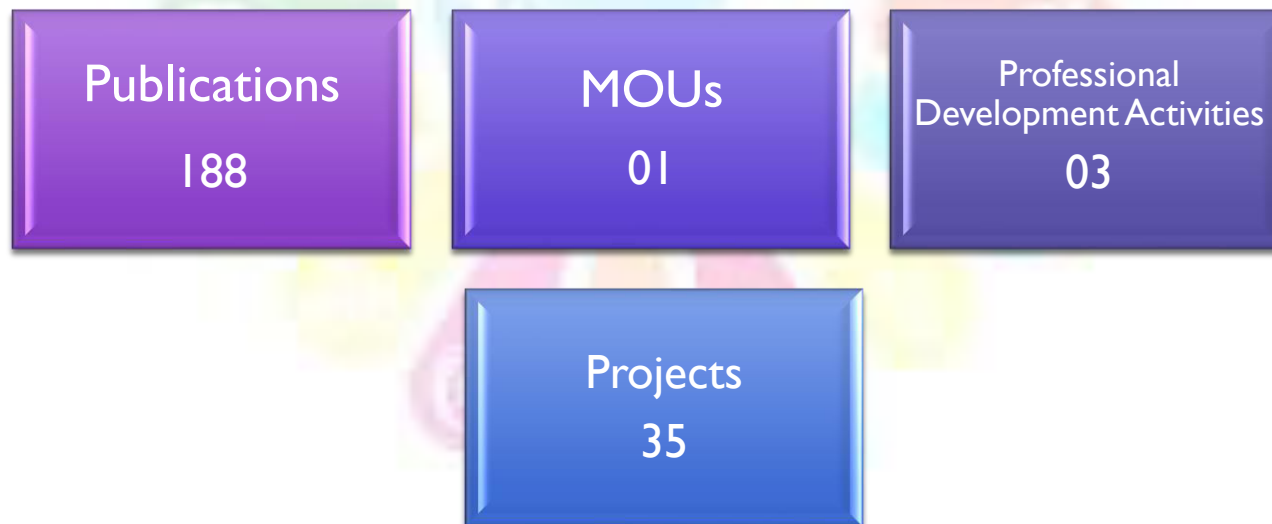
Metric Indicator: 14.4.2

Description: Have an action plan in place to reduce plastic waste on campus

Awareness Campaign About Plastic Usages

Plastic Free Day

[Department of Environmental Sciences Celebrated a Plastic Free Day 2023 \(lcwu.edu.pk\)](https://www.lcwu.edu.pk)





SDG-15 LIFE ON LAND

“Protect, restore and promote sustainable use of terrestrial ecosystems, sustainably manage forests, combat desertification, and halt and reverse land degradation and halt biodiversity loss” (UN-2015)

Supporting Land Ecosystems through Education

Lahore College for Women University (LCWU) supports land ecosystem conservation through a comprehensive educational approach. The university hosts events on sustainable land use, engaging students and the community in discussions about soil health, responsible agriculture, and ecosystem preservation. LCWU also promotes sustainably farmed food on campus, encouraging practices that support local agriculture and reduce environmental impact.

To protect biodiversity, LCWU works to maintain and enhance existing campus green spaces and planting native species. Educational programs are integrated into the curriculum, covering topics on ecosystem dynamics, conservation, and biodiversity. These programs aim to inspire environmental stewardship and equip students with the knowledge needed to actively protect and support land ecosystems.

Supporting Land Ecosystems through Action

Lahore College for Women University (LCWU) is committed to actively supporting land ecosystems through sustainable practices and conservation efforts. The university engages in initiatives focused on the sustainable use, conservation, and restoration of land resources, ensuring that campus spaces and surrounding areas are managed responsibly. LCWU promotes sustainably farmed food on campus, sourcing local produce to support eco-friendly agriculture and reduce the environmental impact of food consumption.

In its efforts to protect biodiversity, LCWU maintains and extends existing green spaces, creating habitats for native flora and fauna and fostering a balanced ecosystem. The university offers educational programs on ecosystem dynamics, conservation strategies, and biodiversity, which are integrated into both academic and extracurricular activities.

Land Sensitive Waste Disposal

Lahore College for Women University (LCWU) prioritizes land-sensitive waste disposal practices, ensuring that campus waste management minimizes soil contamination and protects the surrounding environment. The university follows strict water discharge guidelines and standards to prevent pollutants from affecting local water bodies, maintaining high standards for wastewater treatment and disposal. LCWU has taken various steps focused on reducing plastic waste, actively promoting alternatives to single-use plastics and organizing campaigns to encourage recycling and waste reduction on campus. These measures reflect LCWU's commitment to sustainable resource management and environmental protection.



[LCWU Kitchen Garden](#)

SDG-15: Life on land indicator 15.2.2

Available at: <https://lcwu.edu.pk/news-aug2020/3843-lcwu-kitchen-garden.html>



International Seminar on “Sustainable Agriculture in Climate Change Mitigation and Adaptation”

SDG-15: Life on land indicator 15.3.5

Available at: <https://www.lcwu.edu.pk/news-archive-2023/march/3367-international-seminar-on-sustainable-agriculture-in-climate-change-mitigation-and-adaptation.html>



Tree Plantation on Olympic Day

SDG-15: Life on land indicator 15.3.5

Available at: <https://www.lcwu.edu.pk/e-gallery/events-2023/event/events-2023/treeplantation23.html>



LCWU Alumni Give Back with a Green Touch -
Planting Trees for a Sustainable Future

SDG-15: Life on land indicator 15.3.5

Available at: <https://alumni.lcwu.edu.pk/esep.php>





SDG-16 PEACE, JUSTICE AND STRONG INSTITUTION

“Promote peaceful and inclusive societies for sustainable development, provide access to justice for all and build effective, accountable and inclusive institutions at all levels” (UN,2015)

University Governance Measures

Lahore College for Women University (LCWU) upholds transparent and inclusive governance practices, ensuring responsible management and active stakeholder engagement. The university has elected representation, allowing faculty and staff to participate in key decision-making processes, while the students' union provides students with a platform to voice their interests and concerns. LCWU actively identifies and engages with local stakeholders, including community organizations, government bodies, and industry partners, fostering collaborative relationships to support university initiatives. These governance measures reflect LCWU's dedication to ethical leadership and community involvement.



HESSA Members Meeting Regarding University Governance Measures

SDG-16: Peace, Justice and Strong Institutions Indicator:1

Available at: <https://lcwu.edu.pk/news-aug2020/3761-hessa-meeting-held-at-lcwu.html>

Working with Government

Lahore College for Women University (LCWU) actively collaborates with government bodies to support policy development and provide educational outreach to policymakers and lawmakers. Through these efforts, LCWU contributes to informed decision-making on key issues such as sustainability, education, and social development. The university participates in government research initiatives, lending academic expertise to studies that address national priorities and societal challenges.

LCWU also serves as a neutral platform where stakeholders, including government officials, academics, and community members, can engage in open discussions on pressing issues. This platform fosters constructive dialogue and promotes collaborative solutions, aligning with LCWU's commitment to positively impacting public policy and community welfare.

Proportion of Graduates in Law and Civil Enforcement

Lahore College for Women University (LCWU) supports academic programs that contribute to law and civil enforcement sectors, with a growing proportion of graduates entering fields related to legal studies, public policy, and governance. These graduates often pursue careers in law, public administration, and civil enforcement, equipped with the knowledge and skills needed to impact legal systems and community safety. LCWU's emphasis on law and social sciences education aligns with its mission to prepare graduates for roles that contribute to social justice, governance, and public service.



STEAM Design Challenge Activity with Children of Grade 5 from a Welfare School for Underprivileged Children

SDG-16: Peace, Justice and Strong Institutions Indicator:2

Available at: <https://www.lcwu.edu.pk/outreach-activities.html>

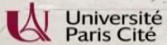


*President Talk on mental Health and Well-Being
SDG-16: Peace, Justice and Strong Institutions*

<https://www.lcwu.edu.pk/news-archive-2023/november/3803-prof-dr-amina-muazzam-participated-in-a-meeting-headed-by-the-president-of-pakistan.html>



**One-Day International Seminar on
Scholarly Investigations into hydrodynamic and sedimentation
patterns of Tarbela Reservoirs**



One-day international Seminar on Tarbela Reservoir's Hydrodynamic Exploration

SDG-16: Peace, Justice and Strong Institutions

Available at: <https://www.lcwu.edu.pk/news-archive-2023/december/3851-1-day-international-seminar-on-tarbela-reservoir-s-hydrodynamic-exploration.html>





SDG-17 PARTNERSHIP FOR THE GOALS

“Strengthen the means of implementation and revitalize the global partnership for sustainable development” (UN,2015)

Relationships to Support the Goals

Lahore College for Women University (LCWU) fosters strategic relationships with NGOs, government agencies, and international organizations to advance Sustainable Development Goals (SDGs) and drive impactful change. Through collaborations with NGOs and government bodies, LCWU supports the development and implementation of SDG-focused policies, promoting sustainable practices and community welfare. The university actively participates in cross-sectoral dialogues, bringing together experts, policymakers, and community leaders to discuss challenges and opportunities related to the SDGs.

LCWU also engages in international collaborations to gather data and research insights for tracking SDG progress, ensuring its initiatives are informed by global perspectives and aligned with best practices. The university’s partnerships with NGOs allow for hands-on SDG projects that address local needs, such as environmental sustainability, education, and health. These collaborations reflect LCWU’s commitment to fostering a sustainable, equitable future and building a network dedicated to advancing the SDGs on both local and international levels.

16 Days of Activism for Ending Gender-based Violence

On December 6th, the Mumkin Alliance, in collaboration with the Gender Studies Department of Lahore College for Women University, orchestrated a commemorative event for the 16 Days of Activism to combat Gender-Based Violence against women. The gathering drew participation from esteemed guest speakers, the revered Head of Department, faculty members, and students of the Gender Studies Department. The primary objective was to instill awareness and comprehension regarding the prevention of Gender-Based Violence.



SDG-17: Partnership for Goals

Indicator: 17.2

Available at: <https://www.lcwu.edu.pk/news-archive-2023/december/3818-16-days-of-activism-for-ending-gender-based-violence.html>

International Conference on "Breaking Barriers through Diversity and Inclusivity."

The LCWU team, led by Prof. Dr. Uzma Qureshi, participated in a three-day pre-conference session for the upcoming APWUC, USAID, and NRSP conference on "Breaking Barriers through Diversity and Inclusivity" on December 2023.



SDG-17: Partnership for Goals

Indicator: 17.2

Available at: <https://www.lcwu.edu.pk/news-archive-2023/december/3858-international-conference-on-breaking-barriers-through-diversity-and-inclusivity.html>

MOU signed between LCWU and Search for justice-CAN, Pakistan

A Memorandum of Understanding was signed between Lahore College for Women University (Sociology Department) and Search for justice-CAN on November 29th, 2023.



SDG-17: Partnership for Goals

Indicator: 17.2

Available at: <https://www.lcwu.edu.pk/news-archive-2023/november/3796-mou-signed-between-lcwu-and-search-for-justice-can-pakistan.html>

MOU signed between the Department of Social Work, LCWU and Alkhidmat Foundation



SDG-17: Partnership for Goals

Indicator: 17.2

Available at: <https://www.lcwu.edu.pk/news-archive-2023/november/3796-mou-signed-between-lcwu-and-search-for-justice-can-pakistan.html>

A Memorandum of Understanding (MOU) was signed between the Department of Social Work, Lahore College for Women University, and Alkhidmat Foundation, Lahore on October 31st, 2023. This agreement seeks collaboration between two entities in terms of Community Service, Seminars, Internships and Research opportunities for students.

TED Talks under the theme of Climate Change at LCWU

TEDxLCWU Countdown 2023 took place on December 14th, 2023. The event, licensed by TED, featured local voices and TED Talks under the theme of climate change. The talks were focused on five subject areas: power, built environment, transport, food and nature. In hosting this event the organizers raised awareness, established linkages and initiated dialogues that translated into action through our young inspiring leaders. TED Countdown event is part of a bold, global movement which aims to find ways to shift, more rapidly, to a world with net zero greenhouse emissions and tackle the climate crisis. This event showcased the contributions of the faculty members, alumnus of Lahore College for Women University and from the civil society in tackling climate change.



SDG-17: Partnership for Goals

Indicator: 17.2

Available at: <https://www.lcwu.edu.pk/news-archive-2023/december/3837-ted-talks-under-the-theme-of-climate-change-at-lcwu.html>

National and International MOUs/LOIs signed by LCWU in 2023 for data gathering for SDGs and collaboration for SDG best practices:

- *Mindstorm Studio, Lahore Focus: Game Building Studio*
- *Search For Justice, Children Advocacy Network (CAN)*
- *Pakistan Navy War College Lahore (PNWU)*
- *D-sign Services Private Limited*
- *Punjab Information Technology Board (PITB)*
- *Alkhidmat Foundation*
- *Lahore Chamber of Commerce and Industry*
- *Applied Scientific Research Center (ASRC)*
- *The Imperial College of Business Studies (ICBS)*
- *White Ribbon Pakistan*

- *Pakistan Bureau of Statistics (PBS)*
- *Punjab Small Industries Corporation*
- *Alltech Pakistan Pvt. Ltd*
- *TU Dortmund University, Germany*
- *Soil Fertility Research Institute (SFRI)*
- *Pakistan Boy Scouts Association (PBSA)*
- *Knowledge Streams Lahore*
- *Tehseen Industries/Research Grant Agreement*
- *TTI, Testing Laboratories Lahore Pakistan*

Publication of SDG Reports

Lahore College for Women University (LCWU) demonstrates its commitment to sustainability and the Sustainable Development Goals (SDGs) through the regular publication of SDG reports. These reports provide comprehensive updates on the university's initiatives, achievements, and progress toward meeting specific SDG targets. These publications also serve as valuable resources for sharing best practices and inspiring further action within the academic and local communities.

Education for the SDGs

Lahore College for Women University (LCWU) integrates education for the Sustainable Development Goals (SDGs) into its curriculum, offering specific courses focused on sustainability and global development. These courses cover essential topics such as environmental science, social justice, sustainable economics, and resource management, equipping students with the knowledge and skills to contribute effectively to SDG-related initiatives.

Beyond the classroom, LCWU extends its educational efforts to the wider community through outreach programs, workshops, and seminars. These initiatives raise awareness about the SDGs and promote sustainable practices, engaging local communities and inspiring broader participation in sustainable development. LCWU's commitment to SDG education fosters a culture of responsibility and empowerment, preparing both students and community members to make a positive impact on society and the environment.

Education for SDGs in the wider community

- Through its e-Rozgar program, LCWU offers free educational courses to women, including alumni and local residents.
- Our university has also adopted the British Council's Active Citizenship Program (ACP), which has led to various outreach initiatives in local schools and the community.